

## LAYTON - PLAN M4957A3S-0

Total Area: 4957 sq. ft.  
Garage Area: 875 sq. ft.  
Garage Area: 875 sq. ft.  
Garage Size: 3  
Stories: 2  
Bedrooms: 5  
Full Baths: 4  
Half Baths: 1  
Width: 87'-0"  
Depth: 70'-0"  
Height: 31'-6"  
Foundation: Crawl Space



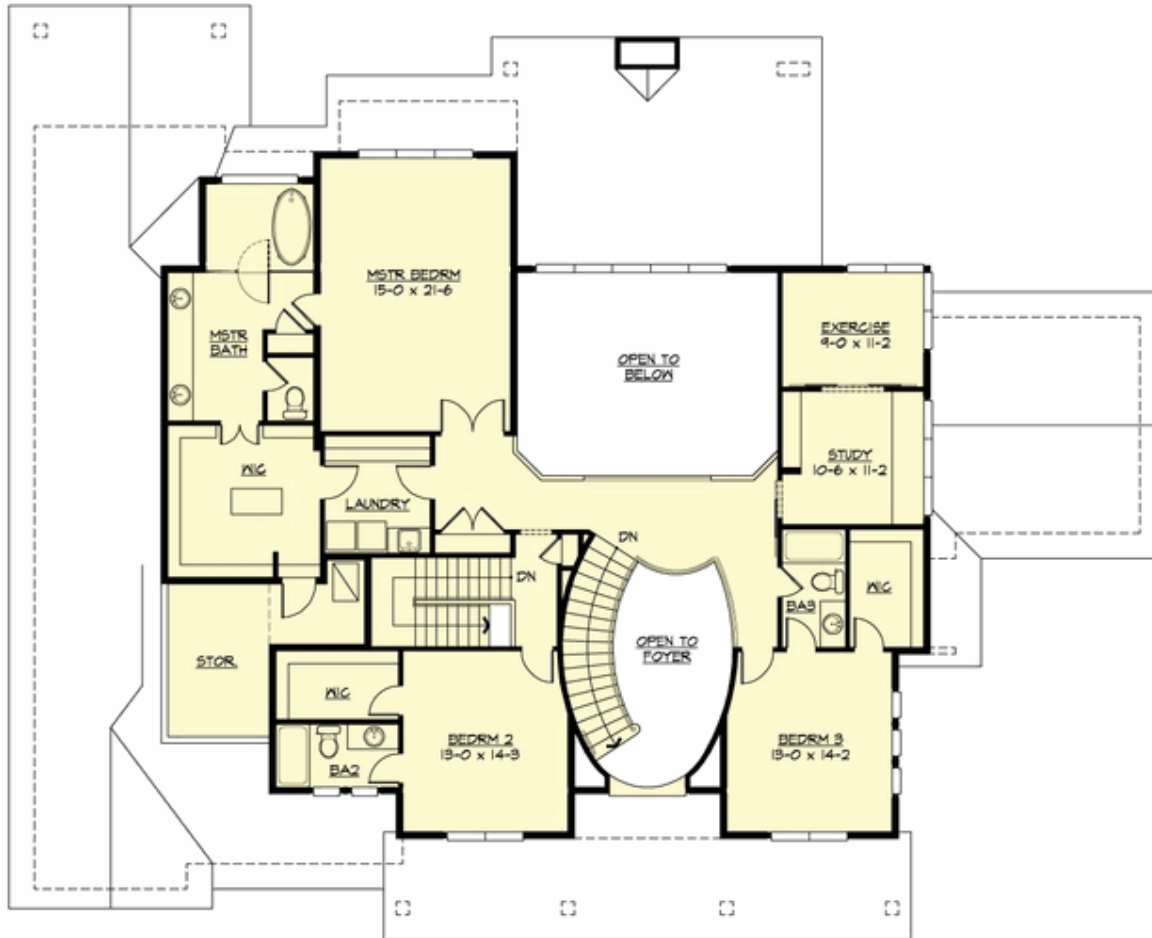
## LAYTON - PLAN M4957A3S-0

### MAIN FLOOR



## LAYTON - PLAN M4957A3S-0

### UPPER FLOOR



## LAYTON - PLAN M4957A3S-0

### PLAN DETAILS

#### Area Summary

Total Area: 4957 sq. ft.  
Main Floor: 2990 sq. ft.  
Upper Floor: 1967 sq. ft.  
Garage Floor: 875 sq. ft.

#### General Information

Stories: 2  
Width: 87'-0"  
Depth: 70'-0"  
Height: 31'-6"

#### Architectural Style

Country  
Farmhouse  
Modern

#### Number of Rooms

Bedrooms: 5  
Full Baths: 4  
Half Baths: 1

#### Garage

Garage Size: 3  
Garage Door Location: Side

#### Roof Pitches

Primary: 10:12  
Secondary: 6:12

#### Wall Heights

Main: 10'-0"  
Upper: 9'-0"

#### Foundation Type

Crawl Space

#### Roof Framing

Trusses

#### Floor Load

Live (lbs): 40 PSF  
Dead (lbs): 10 PSF

#### Roof Load

Live (lbs): 25 PSF  
Dead (lbs): 15 PSF  
Wind: 85 MPH

#### Design Features

- Bonus Space @ Main Floor
- Den/Office
- Front and Rear Porch
- Great Room
- Laundry Room @ Upper Floor
- Master Bedroom @ Upper Floor Rear
- View Lot - Rear
- Wide Lot