

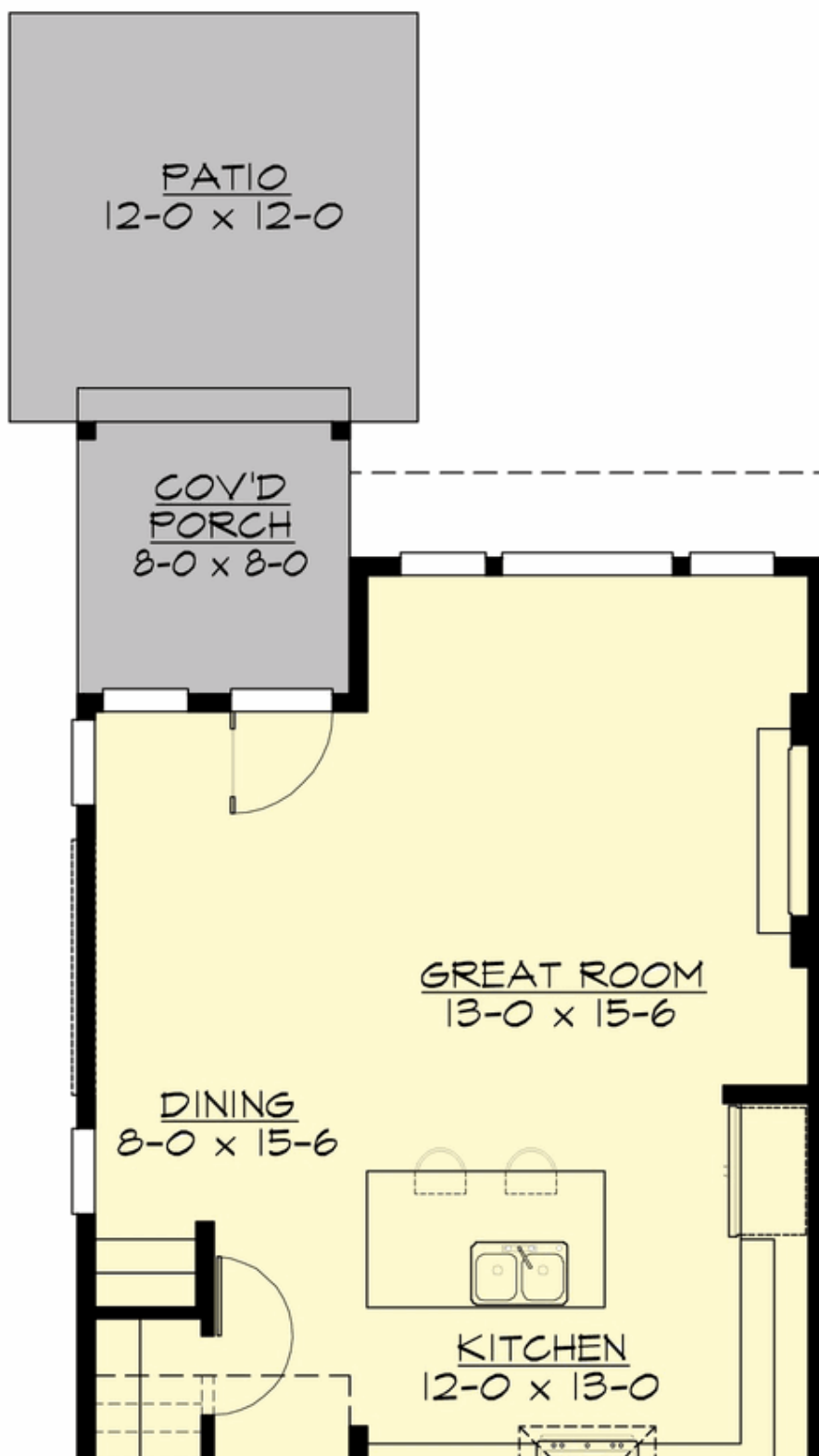
## LUNARIA - PLAN M1735B1F-0

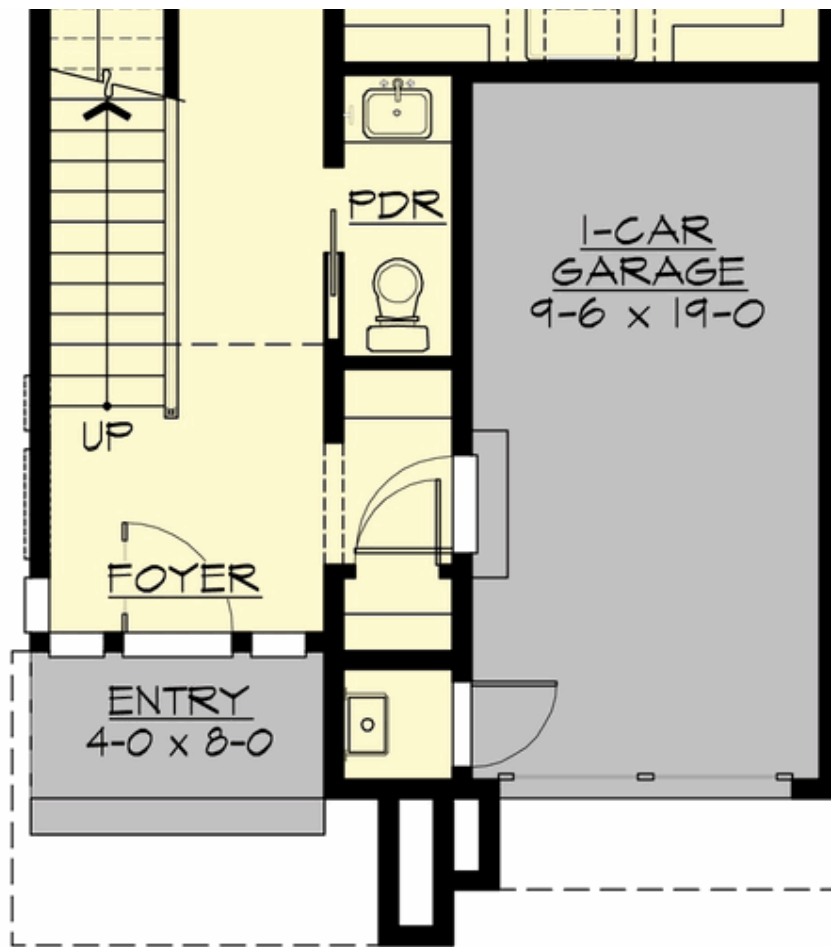
Total Area: 1736 sq. ft.  
Garage Area: 216 sq. ft.  
Garage Area: 216 sq. ft.  
Garage Size: 1  
Stories: 2  
Bedrooms: 3  
Full Baths: 2  
Half Baths: 1  
Width: 22'-0"  
Depth: 56'-0"  
Height: 25'-0"  
Foundation: Crawl Space



**LUNARIA - PLAN M1735B1F-0**

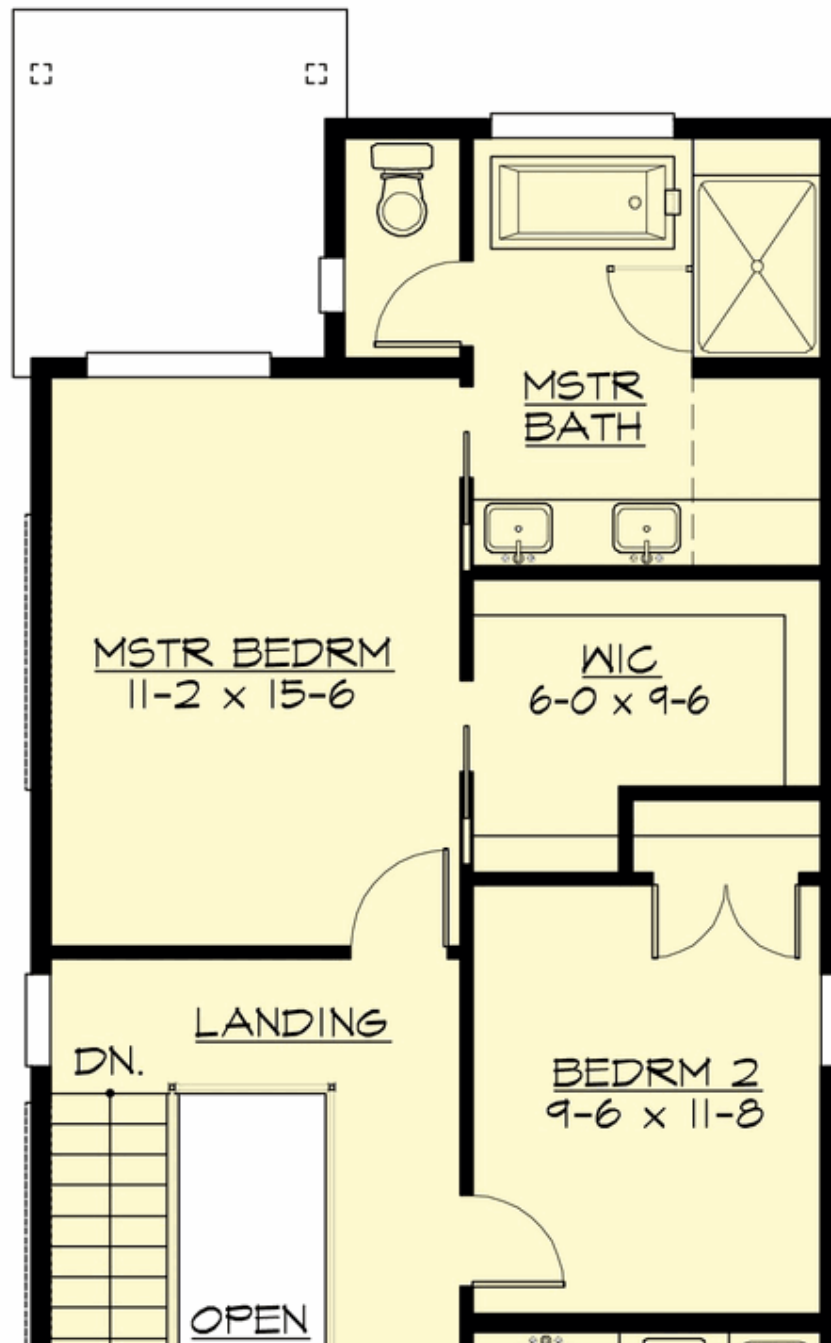
**MAIN FLOOR**

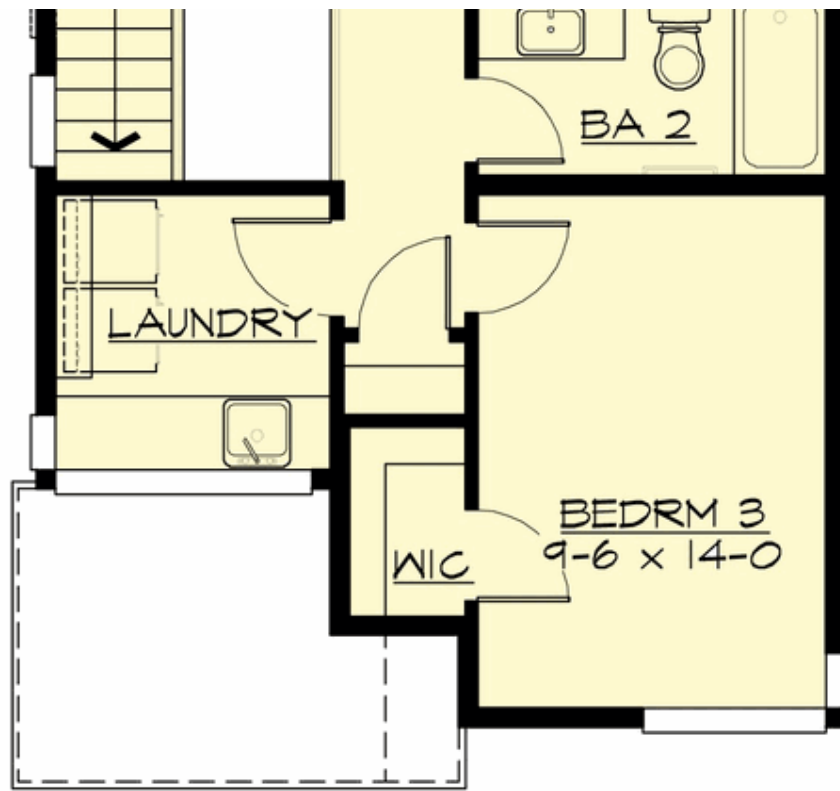




**LUNARIA - PLAN M1735B1F-0**

**UPPER FLOOR**





## LUNARIA - PLAN M1735B1F-0

### PLAN DETAILS

#### Area Summary

Total Area: 1736 sq. ft.  
Main Floor: 776 sq. ft.  
Upper Floor: 960 sq. ft.  
Garage Floor: 216 sq. ft.

#### General Information

Stories: 2  
Width: 22'-0"  
Depth: 56'-0"  
Height: 25'-0"

#### Architectural Style

Contemporary  
Cottage  
Modern

#### Number of Rooms

Bedrooms: 3  
Full Baths: 2  
Half Baths: 1

#### Garage

Garage Size: 1  
Garage Door Location: Front

#### Roof Pitches

Primary: 4:12

#### Wall Heights

Main: 9'-0"  
Upper: 9'-0"

#### Foundation Type

Crawl Space

#### Roof Framing

Trusses

#### Floor Load

Live (lbs): 40 PSF  
Dead (lbs): 10 PSF

#### Roof Load

Live (lbs): 25 PSF  
Dead (lbs): 15 PSF  
Wind: 85 MPH

#### Design Features

- Affordable Plan
- Great Room
- Laundry Room @ Upper Floor
- Master Bedroom @ Upper Floor Rear
- Narrow Lot
- Rear Porch
- Small Plan