

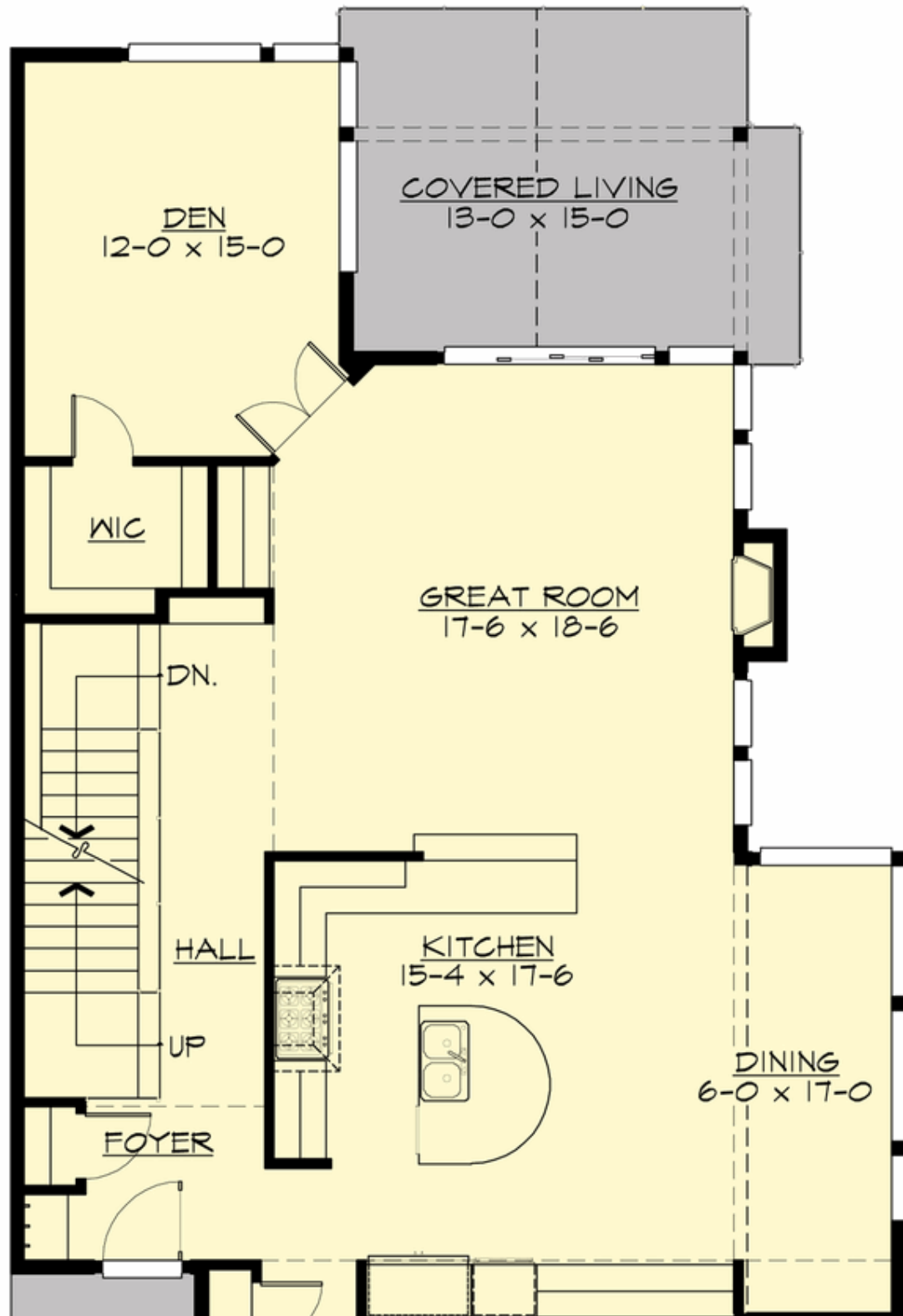
## ALTA - PLAN M3977A2FU-0DB

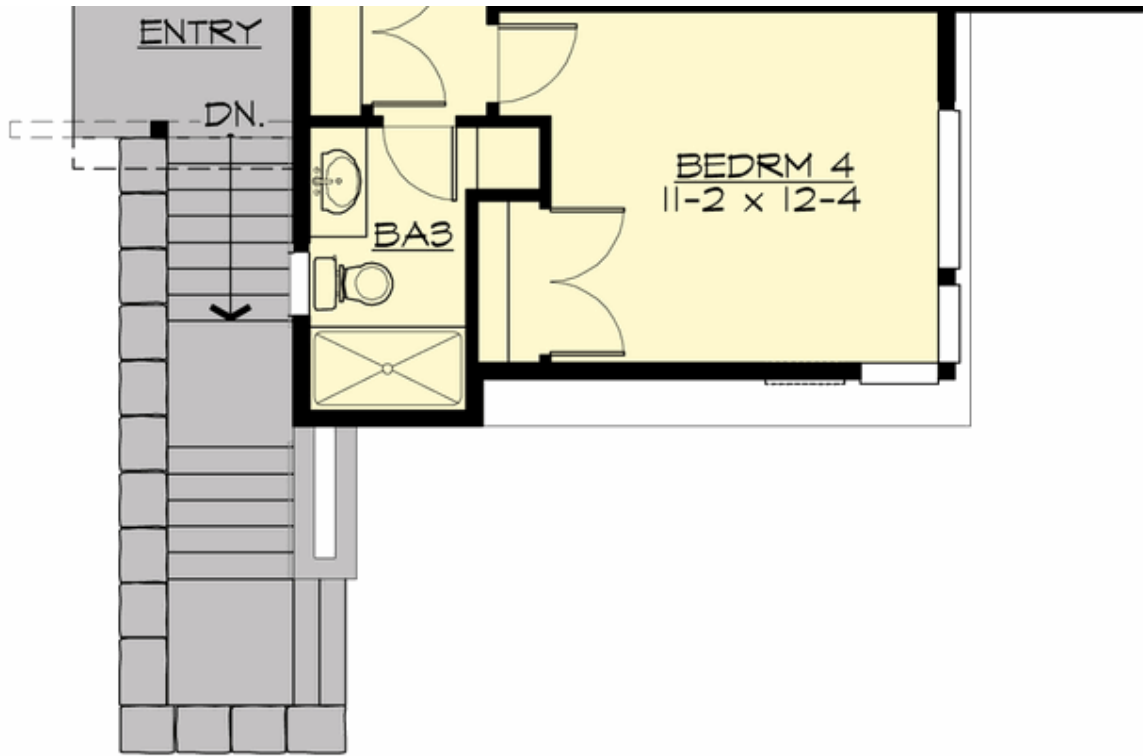
Total Area: 3977 sq. ft.  
Garage Area: 435 sq. ft.  
Garage Area: 435 sq. ft.  
Garage Size: 2  
Stories: 3  
Bedrooms: 5  
Full Baths: 4  
Width: 34'-0"  
Depth: 63'-0"  
Height: 26'-3"  
Foundation: Daylight Basement



## ALTA - PLAN M3977A2FU-0DB

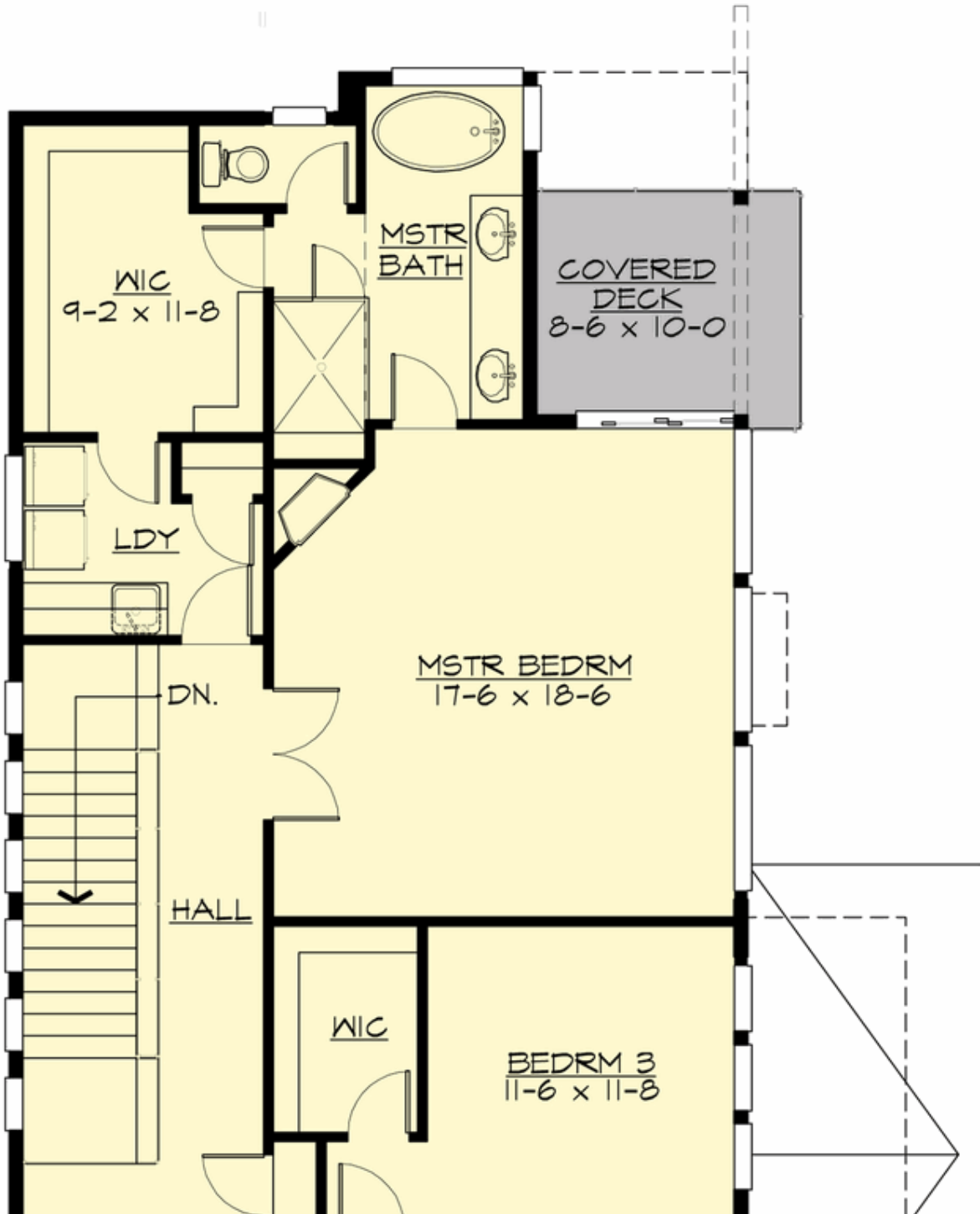
### MAIN FLOOR

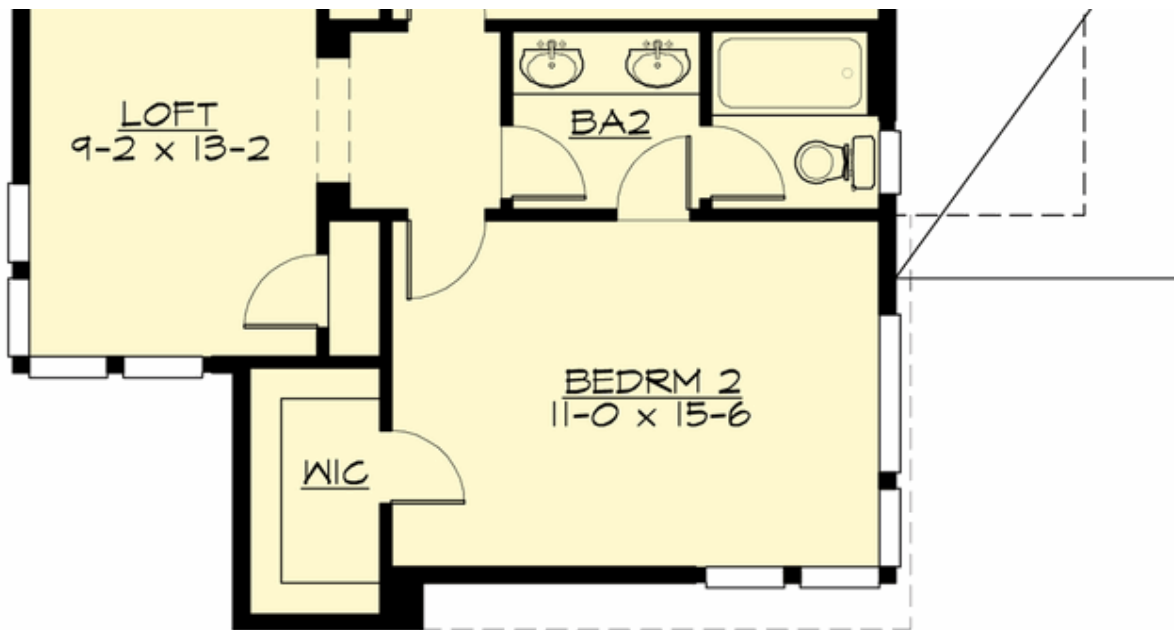




**ALTA - PLAN M3977A2FU-0DB**

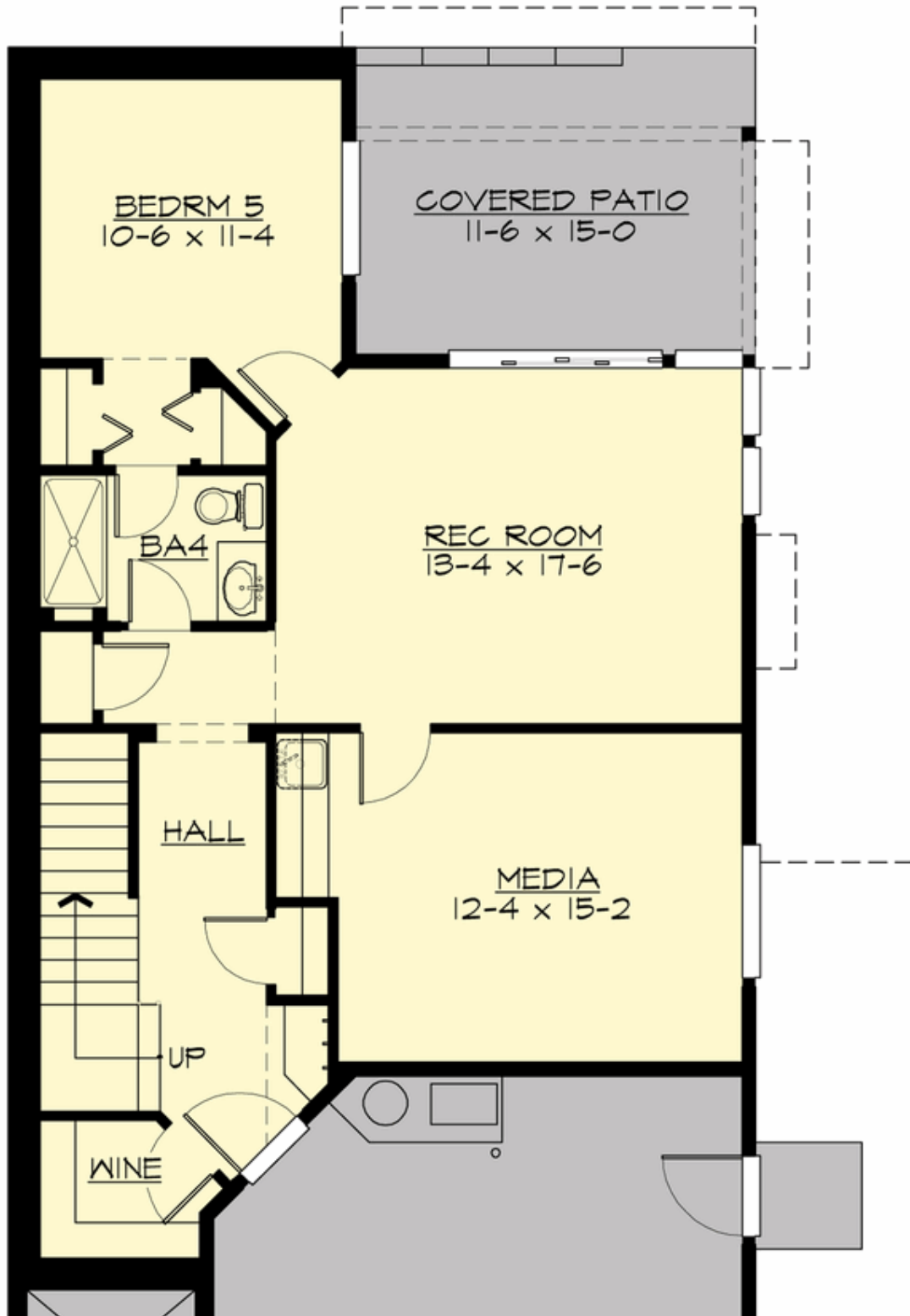
**UPPER FLOOR**

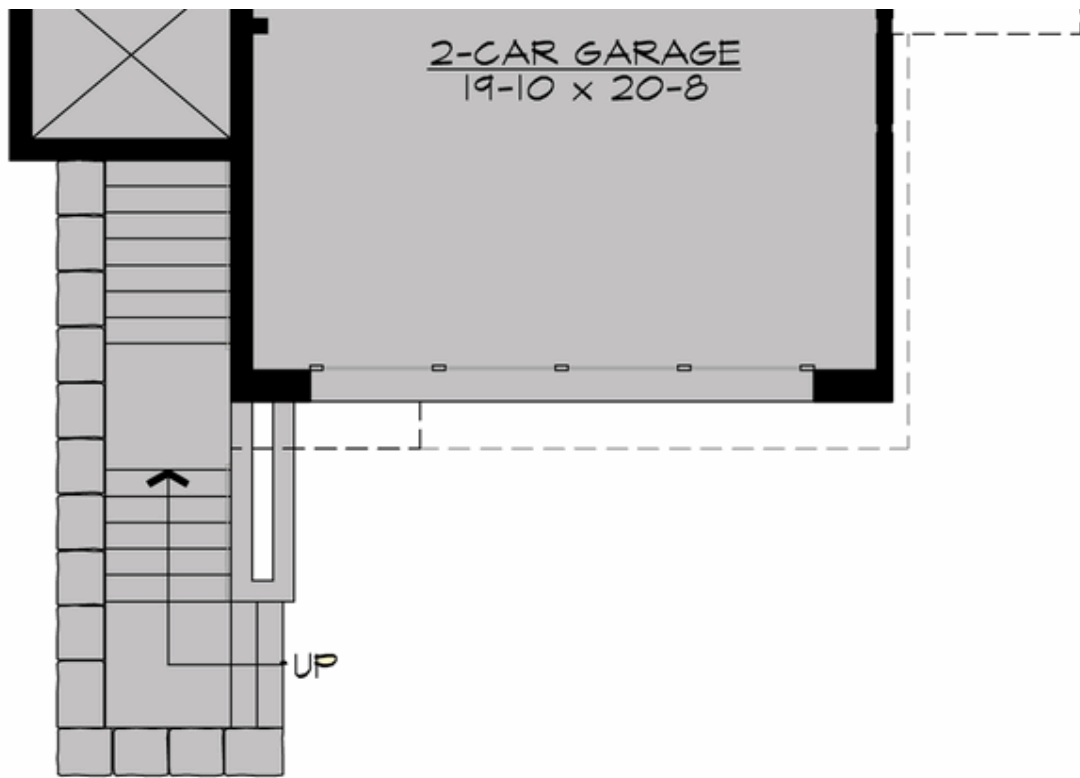




**ALTA - PLAN M3977A2FU-0DB**

**LOWER FLOOR**





## ALTA - PLAN M3977A2FU-0DB

### PLAN DETAILS

#### Area Summary

Total Area: 3977 sq. ft.  
Main Floor: 1541 sq. ft.  
Upper Floor: 1455 sq. ft.  
3rd Floor: 981 sq. ft.  
Garage Floor: 435 sq. ft.

#### General Information

Stories: 3  
Width: 34'-0"  
Depth: 63'-0"  
Height: 26'-3"

#### Architectural Style

Contemporary  
Modern  
Northwest

#### Number of Rooms

Bedrooms: 5  
Full Baths: 4

#### Garage

Garage Size: 2  
Garage Door Location: Front  
Garage Type: Under

#### Roof Pitches

Primary: 3:12

#### Wall Heights

Main: 10'-0"  
Upper: 8'-0"  
Lower: 9'-0"

#### Foundation Type

Daylight Basement

#### Roof Framing

Stick

#### Floor Load

Live (lbs): 40 PSF  
Dead (lbs): 10 PSF

#### Roof Load

Live (lbs): 25 PSF  
Dead (lbs): 15 PSF  
Wind: 85 MPH

#### Design Features

- Bonus Space @ Lower Floor
- Den/Office
- Front and Rear Porch
- Great Room
- Laundry Room @ Upper Floor
- Master Bedroom @ Upper Floor Rear
- Narrow Lot
- New Plan