

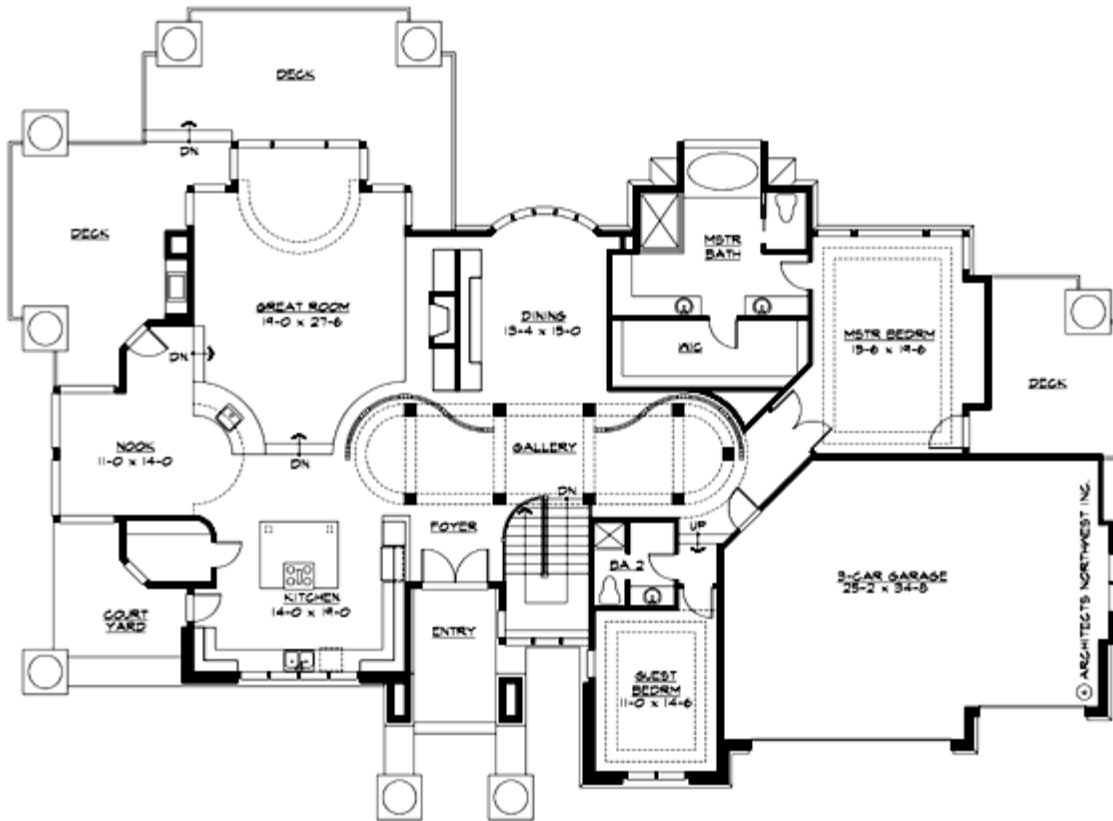
## PENNINGTON - PLAN R5300A3F-0DB

Total Area: 5300 sq. ft.  
Garage Area: 1920 sq. ft.  
Garage Area: 1920 sq. ft.  
Garage Size: 3  
Stories: 2  
Bedrooms: 5  
Full Baths: 4  
Width: 97'-0"  
Depth: 70'-0"  
Height: 17'-6"  
Foundation: Daylight Basement



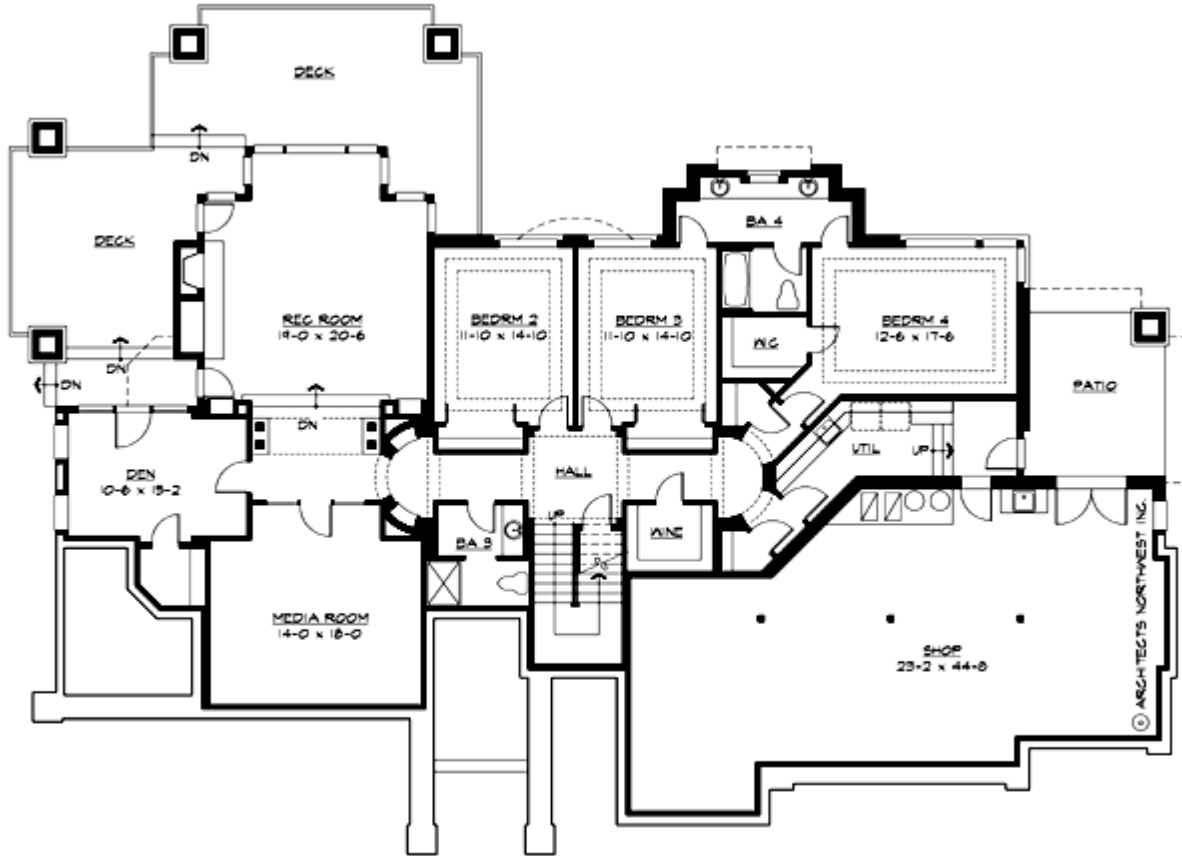
## PENNINGTON - PLAN R5300A3F-0DB

### MAIN FLOOR



**PENNINGTON - PLAN R5300A3F-0DB**

**LOWER FLOOR**



## PENNINGTON - PLAN R5300A3F-0DB

### PLAN DETAILS

#### Area Summary

Total Area:	5300 sq. ft.
Main Floor:	2850 sq. ft.
Lower Floor:	2450 sq. ft.
Garage Floor:	1920 sq. ft.

#### General Information

Stories:	2
Width:	97'-0"
Depth:	70'-0"
Height:	17'-6"

#### Architectural Style

Contemporary  
Modern  
Prairie

#### Number of Rooms

Bedrooms:	5
Full Baths:	4

#### Garage

Garage Size:	3
Garage Door Location:	Front

#### Roof Pitches

Primary:	4:12
----------	------

#### Wall Heights

Main:	10'-0"
Upper:	0'-0"
3rd Floor:	0'-0"
Lower:	10'-0"

#### Foundation Type

Daylight Basement

#### Roof Framing

Trusses

#### Floor Load

Live (lbs):	40 PSF
Dead (lbs):	10 PSF

#### Roof Load

Live (lbs):	25 PSF
Dead (lbs):	15 PSF
Wind:	85 MPH

#### Design Features

- Bonus Space @ Lower Floor
- Den/Office
- Great Room
- Laundry Room @ Lower Floor
- Luxury Plan
- Master Bedroom @ Main Floor Rear
- Rear Porch