

## EASTPOINTE - PLAN R5367A3F-0DB

Total Area: 5367 sq. ft.  
Garage Area: 771 sq. ft.  
Garage Area: 771 sq. ft.  
Garage Size: 3  
Stories: 3  
Bedrooms: 4  
Full Baths: 4  
Half Baths: 1  
Width: 93'-0"  
Depth: 69'-0"  
Height: 23'-0"  
Foundation: Daylight Basement



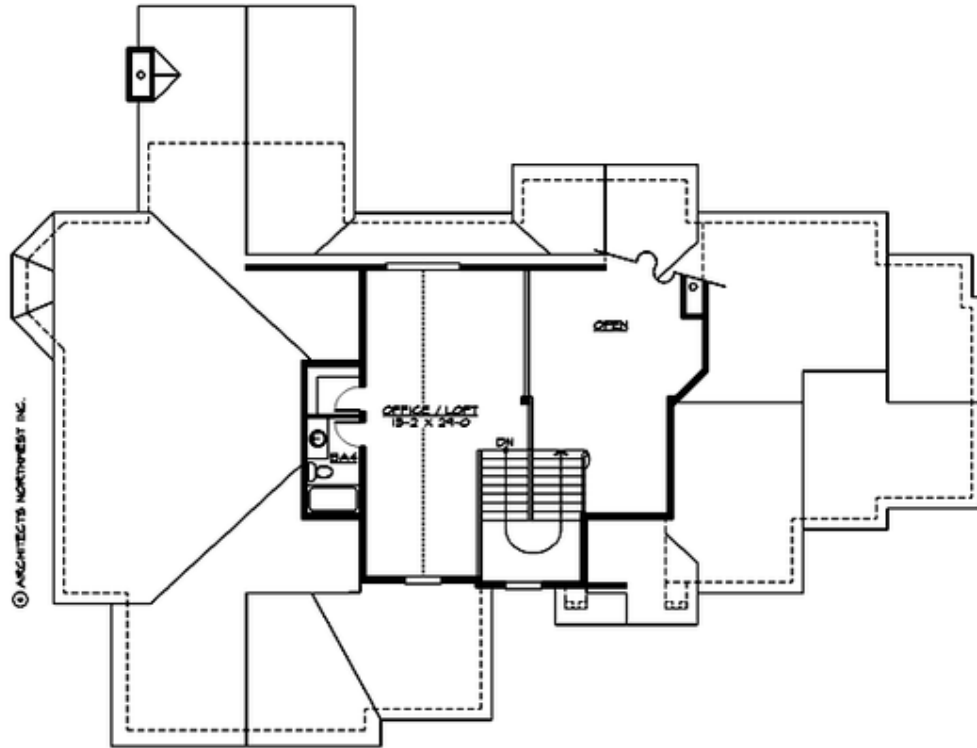
## EASTPOINTE - PLAN R5367A3F-0DB

### MAIN FLOOR



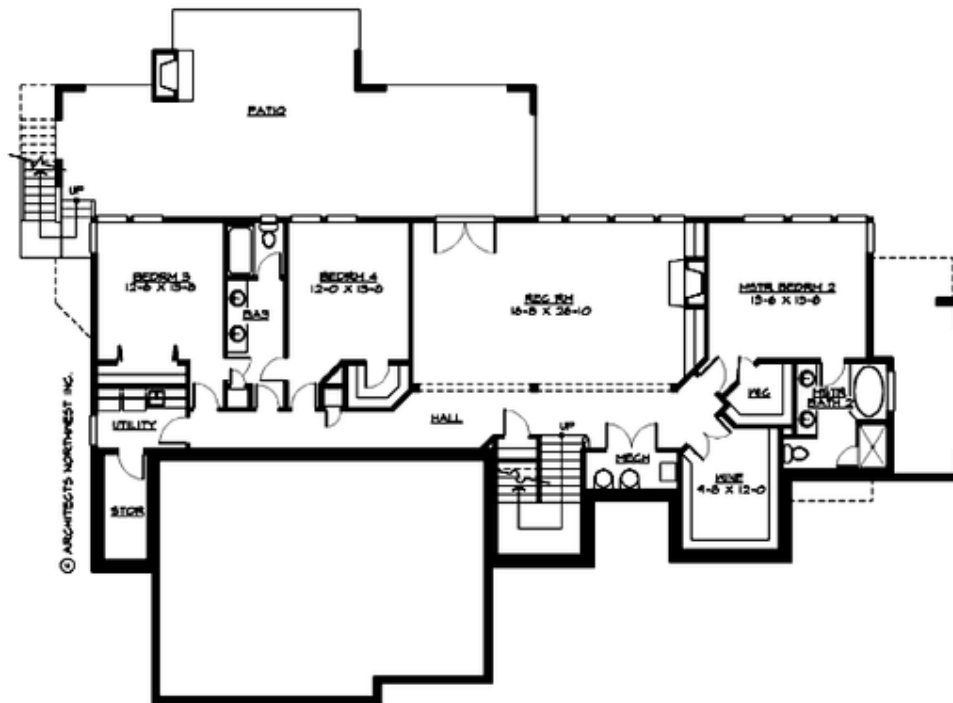
**EASTPOINTE - PLAN R5367A3F-0DB**

**UPPER FLOOR**



## EASTPOINTE - PLAN R5367A3F-0DB

### LOWER FLOOR



## **EASTPOINTE - PLAN R5367A3F-0DB**

### **PLAN DETAILS**

#### **Area Summary**

Total Area: 5367 sq. ft.  
Main Floor: 2636 sq. ft.  
Upper Floor: 507 sq. ft.  
Lower Floor: 2224 sq. ft.  
Garage Floor: 771 sq. ft.

#### **General Information**

Stories: 3  
Width: 93'-0"  
Depth: 69'-0"  
Height: 23'-0"

#### **Architectural Style**

Craftsman  
Hampton  
Shingle

#### **Number of Rooms**

Bedrooms: 4  
Full Baths: 4  
Half Baths: 1

#### **Garage**

Garage Size: 3  
Garage Door Location: Front

#### **Roof Pitches**

Primary: 6:12

#### **Wall Heights**

Main: 9'-0"  
Upper: 7'-0"  
3rd Floor: 0'-0"  
Lower: 10'-0"

#### **Foundation Type**

Daylight Basement

#### **Roof Framing**

Combination

#### **Floor Load**

Live (lbs): 40 PSF  
Dead (lbs): 10 PSF

#### **Roof Load**

Live (lbs): 25 PSF  
Dead (lbs): 15 PSF  
Wind: 85 MPH

#### **Design Features**

- Bonus Space @ Upper Floor & Lower Floor
- Den/Office
- Laundry Room @ Lower Floor
- Living & Family Room
- Master Bedroom @ Main Floor Rear
- View Lot - Rear