

## CHINOOK - PLAN M2770A3S-0

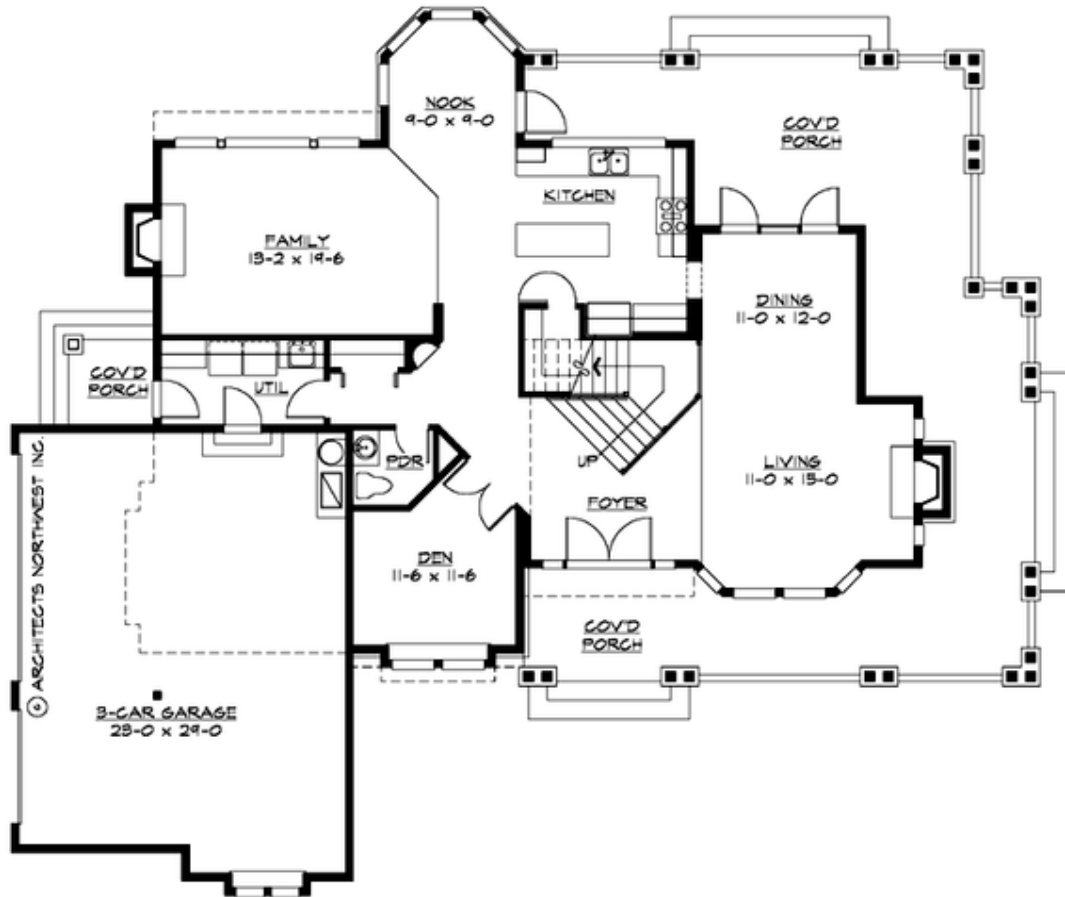
Total Area: 2770 sq. ft.  
 Garage Area: 745 sq. ft.  
 Garage Area: 745 sq. ft.  
 Garage Size: 3  
 Stories: 2  
 Bedrooms: 4  
 Full Baths: 2  
 Half Baths: 1  
 Width: 72'-0"  
 Depth: 61'-0"  
 Height: 27'-0"  
 Foundation: Crawl Space



***Broad, Sweeping Porches Connect Home to Nature.*** The designer's all-time best-selling plan, the popular Craftsman Lodge-style Chinook connects with its owners as it connects them to nature. Its striking wraparound porches and elegant rooflines are supported by sturdy double columns with rugged stone bases, creating a powerful image of shelter. The relaxed floor plan flows easily from the dramatic volume foyer, around the central stairwell, including both formal and informal living spaces, a chef's kitchen, and a work-at-home den. The upper floor features a grand master suite with covered deck, sitting area and deluxe five-fixture bath, along with three secondary bedrooms, a compartmented bath, and an open loft.

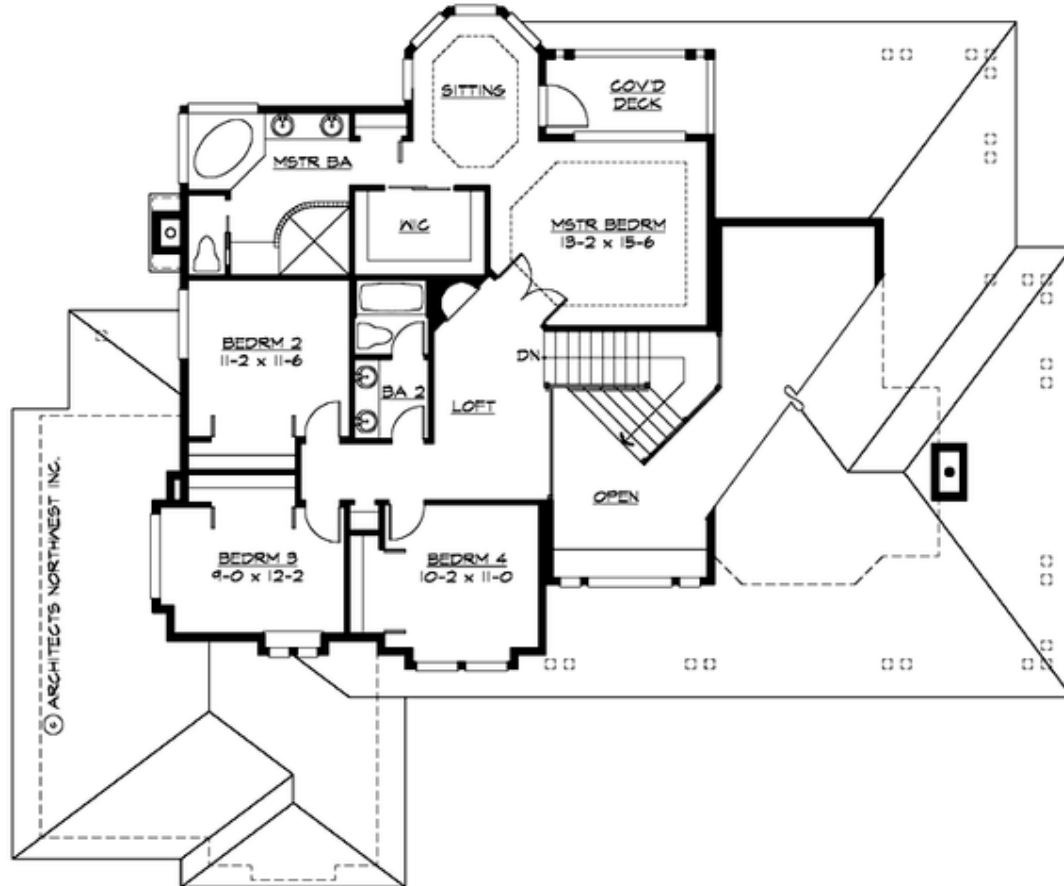
## CHINOOK - PLAN M2770A3S-0

### MAIN FLOOR



## CHINOOK - PLAN M2770A3S-0

### UPPER FLOOR





## CHINOOK - PLAN M2770A3S-0

### PLAN DETAILS

#### Area Summary

Total Area: 2770 sq. ft.  
Main Floor: 1510 sq. ft.  
Upper Floor: 1260 sq. ft.  
Garage Floor: 745 sq. ft.

#### General Information

Stories: 2  
Width: 72'-0"  
Depth: 61'-0"  
Height: 27'-0"

#### Architectural Style

Craftsman  
Northwest  
Shingle

#### Number of Rooms

Bedrooms: 4  
Full Baths: 2  
Half Baths: 1

#### Garage

Garage Size: 3  
Garage Door Location: Side

#### Roof Pitches

Primary: 8:12  
Secondary: 6:12

#### Wall Heights

Main: 9'-0"  
Upper: 8'-0"  
3rd Floor: 0'-0"  
Lower: 0'-0"

#### Foundation Type

Crawl Space

#### Roof Framing

Combination

#### Floor Load

Live (lbs): 40 PSF  
Dead (lbs): 10 PSF

#### Roof Load

Live (lbs): 25 PSF  
Dead (lbs): 15 PSF  
Wind: 85 MPH

#### Design Features

- Best Selling Plan
- Den/Office
- Laundry Room @ Main Floor
- Living & Family Room
- Master Bedroom @ Upper Floor Rear
- Wide Lot
- Wrap-Around Porch