

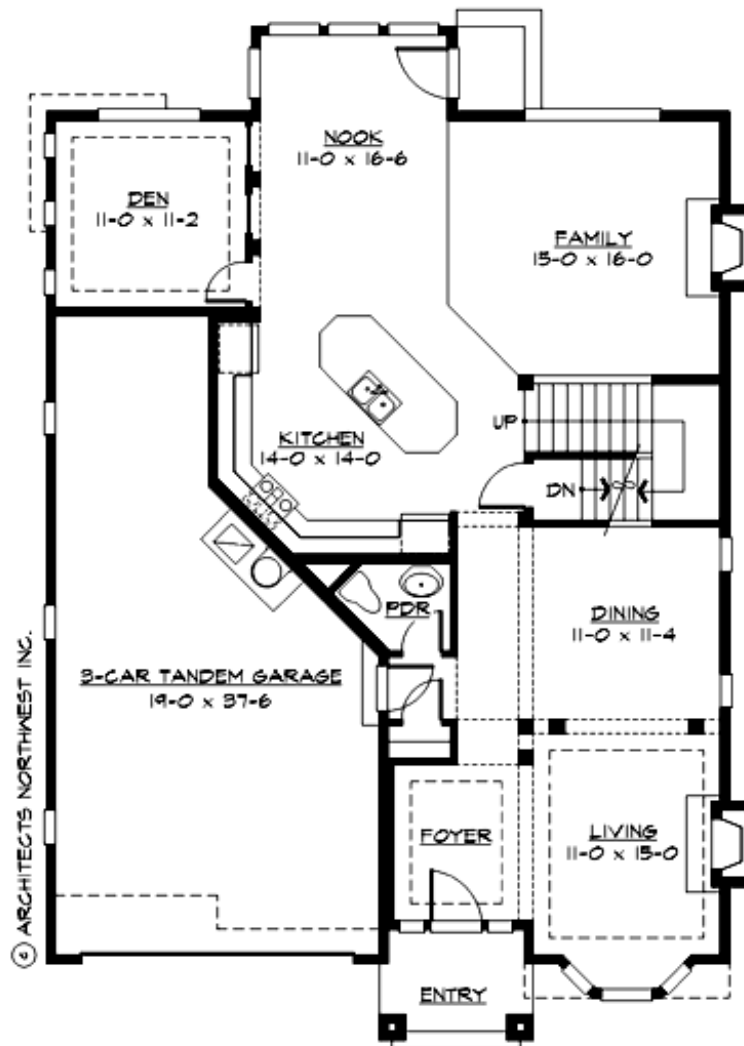
BRIER HILL HEIGHTS - PLAN M3700D3FT-0DB

Total Area: 4410 sq. ft.
Garage Area: 600 sq. ft.
Garage Area: 600 sq. ft.
Garage Size: 3
Stories: 4
Bedrooms: 5
Full Baths: 3
Half Baths: 1
Width: 40'-0"
Depth: 59'-6"
Height: 32'-0"
Foundation: Daylight Basement



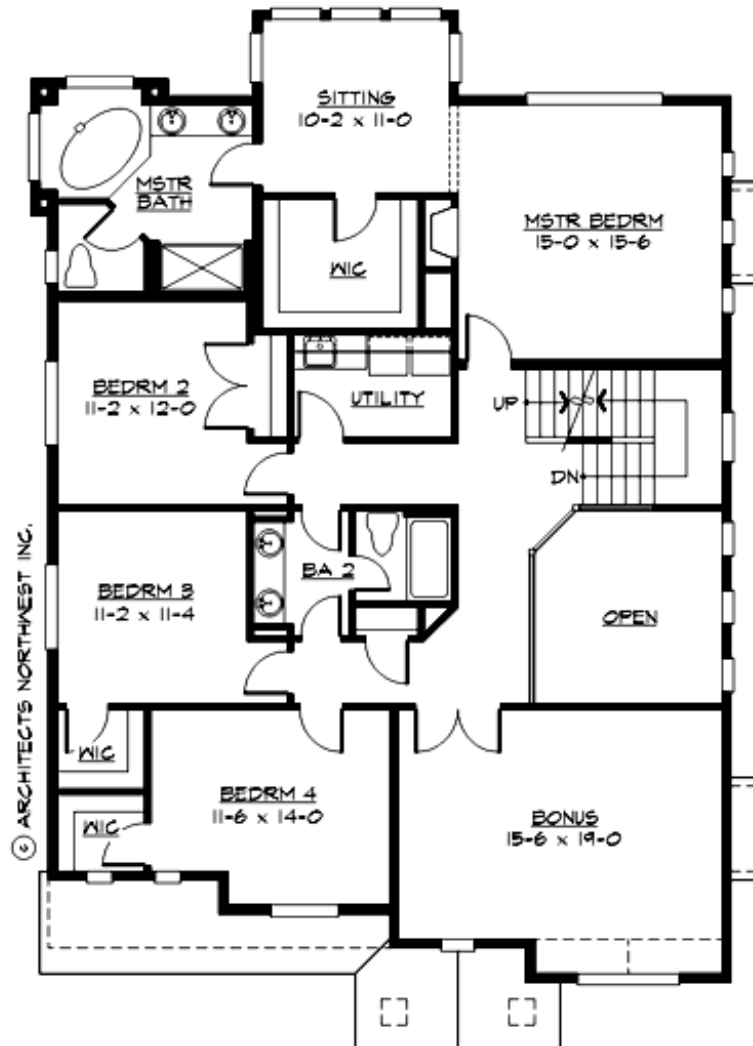
BRIER HILL HEIGHTS - PLAN M3700D3FT-0DB

MAIN FLOOR



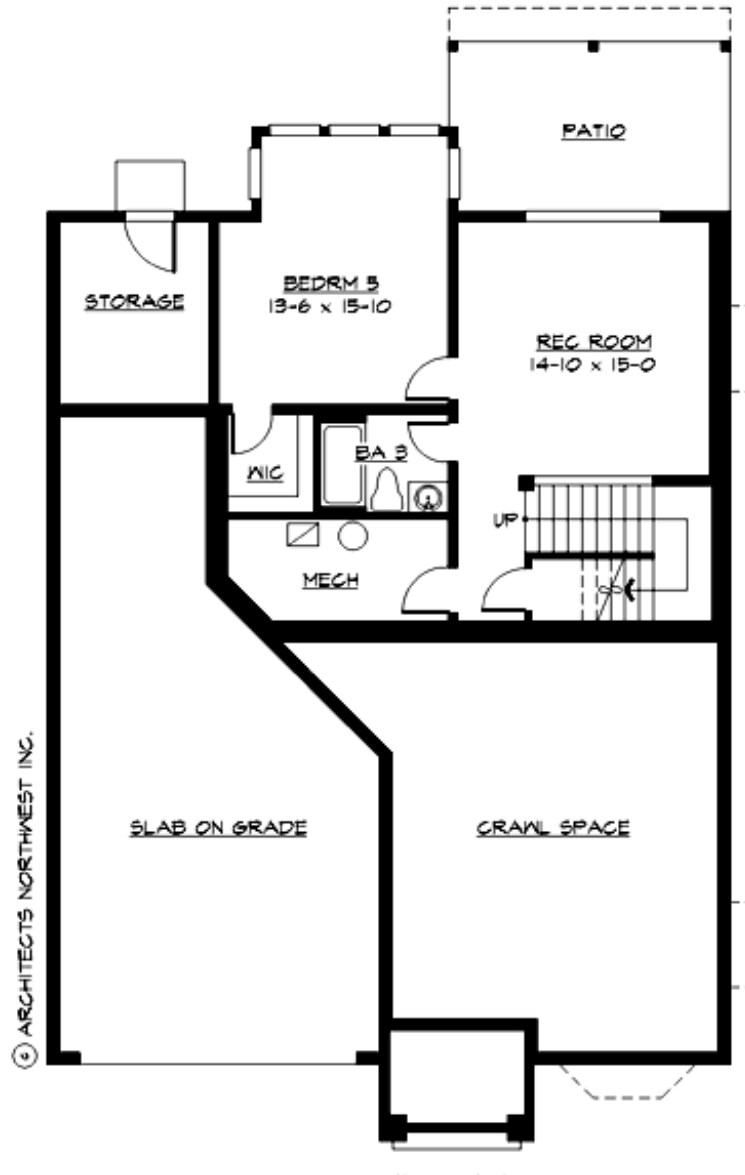
BRIER HILL HEIGHTS - PLAN M3700D3FT-0DB

UPPER FLOOR



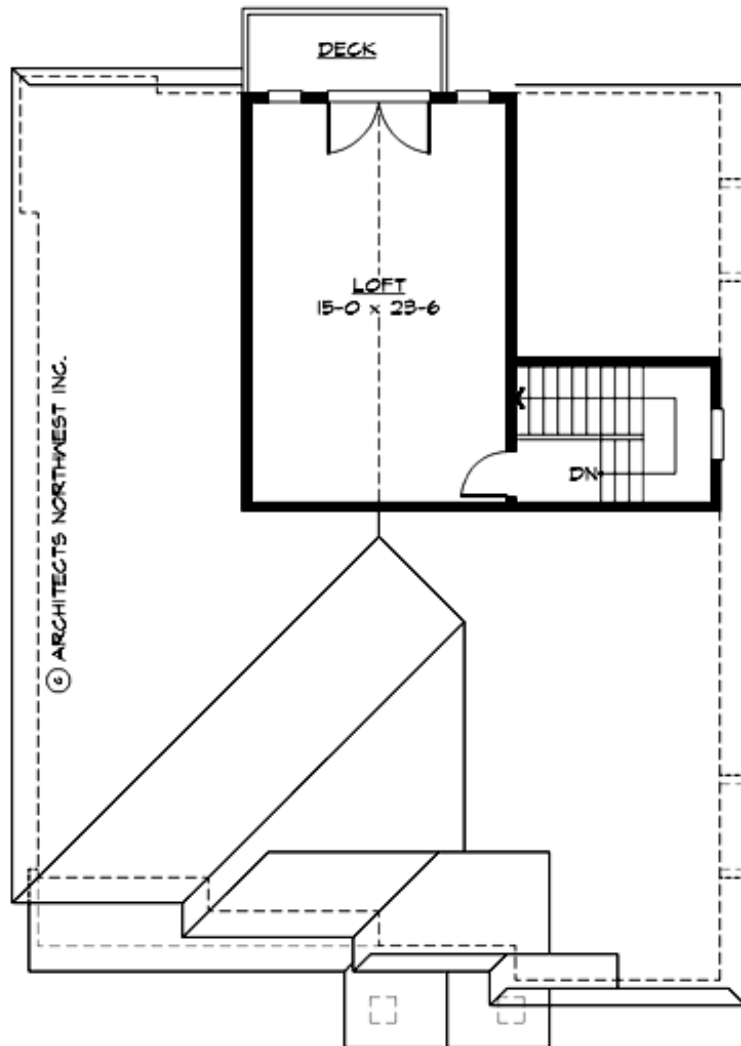
BRIER HILL HEIGHTS - PLAN M3700D3FT-0DB

LOWER FLOOR



BRIER HILL HEIGHTS - PLAN M3700D3FT-0DB

THIRD FLOOR





BRIER HILL HEIGHTS - PLAN M3700D3FT-0DB

PLAN DETAILS

Area Summary

Total Area:	4410 sq. ft.
Main Floor:	1430 sq. ft.
Upper Floor:	1790 sq. ft.
3rd Floor:	480 sq. ft.
Lower Floor:	710 sq. ft.
Garage Floor:	600 sq. ft.

General Information

Stories:	4
Width:	40'-0"
Depth:	59'-6"
Height:	32'-0"

Architectural Style

Hampton
Shingle
Traditional

Number of Rooms

Bedrooms:	5
Full Baths:	3
Half Baths:	1

Garage

Garage Size:	3
Garage Door Location:	Front
Garage Type:	Tandem

Roof Pitches

Primary:	8:12
----------	------

Wall Heights

Main:	9'-0"
Upper:	8'-0"
3rd Floor:	7'-0"
Lower:	9'-0"

Foundation Type

Daylight Basement

Roof Framing

Trusses

Floor Load

Live (lbs):	40 PSF
Dead (lbs):	10 PSF

Roof Load

Live (lbs):	25 PSF
Dead (lbs):	15 PSF
Wind:	85 MPH

Design Features

- Bonus Space @ Upper Floor & Lower Floor
- Den/Office
- Laundry Room @ Upper Floor
- Living & Family Room
- Master Bedroom @ Upper Floor Rear
- Narrow Lot
- Rear Porch