

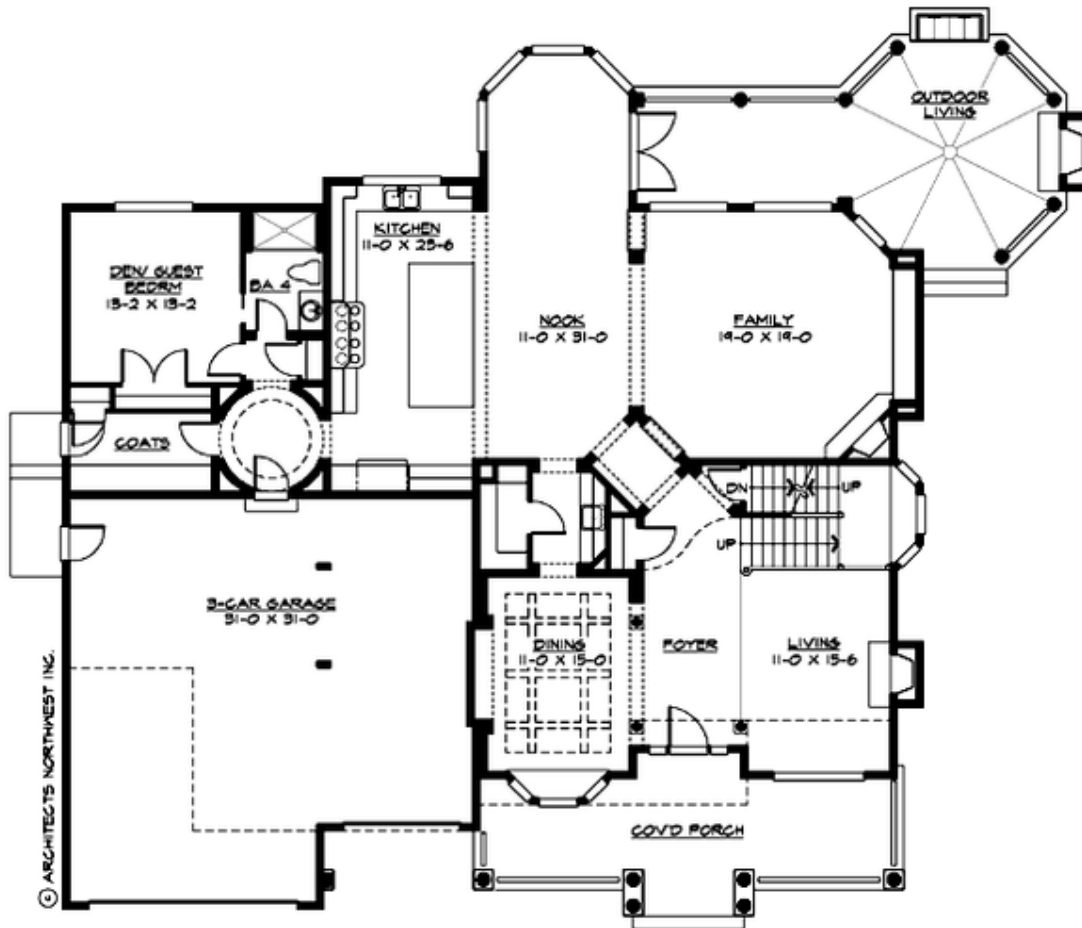
BLAKELEY WOODS HEIGHTS - PLAN M4590B3F-5DB

Total Area: 6555 sq. ft.
Garage Area: 945 sq. ft.
Garage Area: 945 sq. ft.
Garage Size: 3
Stories: 3
Bedrooms: 5
Full Baths: 5
Width: 79'-0"
Depth: 70'-0"
Height: 30'-0"
Foundation: Daylight Basement



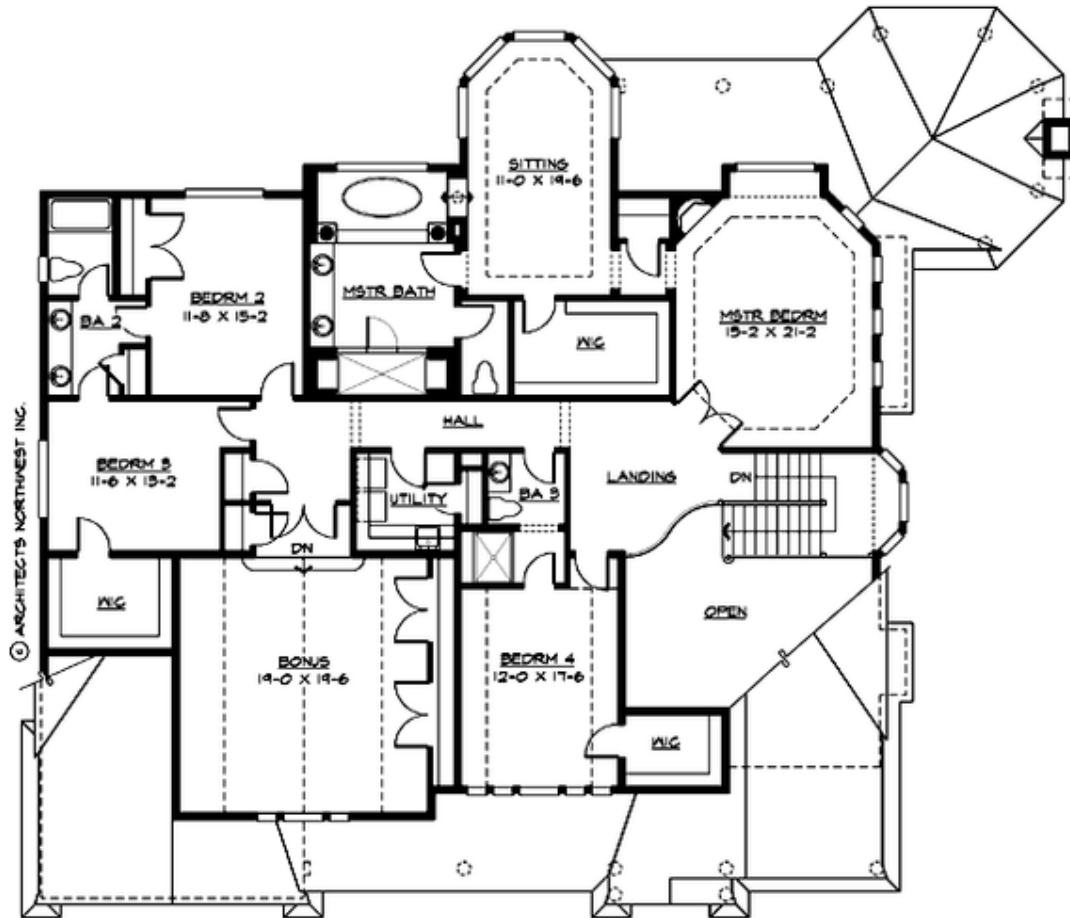
BLAKELEY WOODS HEIGHTS - PLAN M4590B3F-5DB

MAIN FLOOR



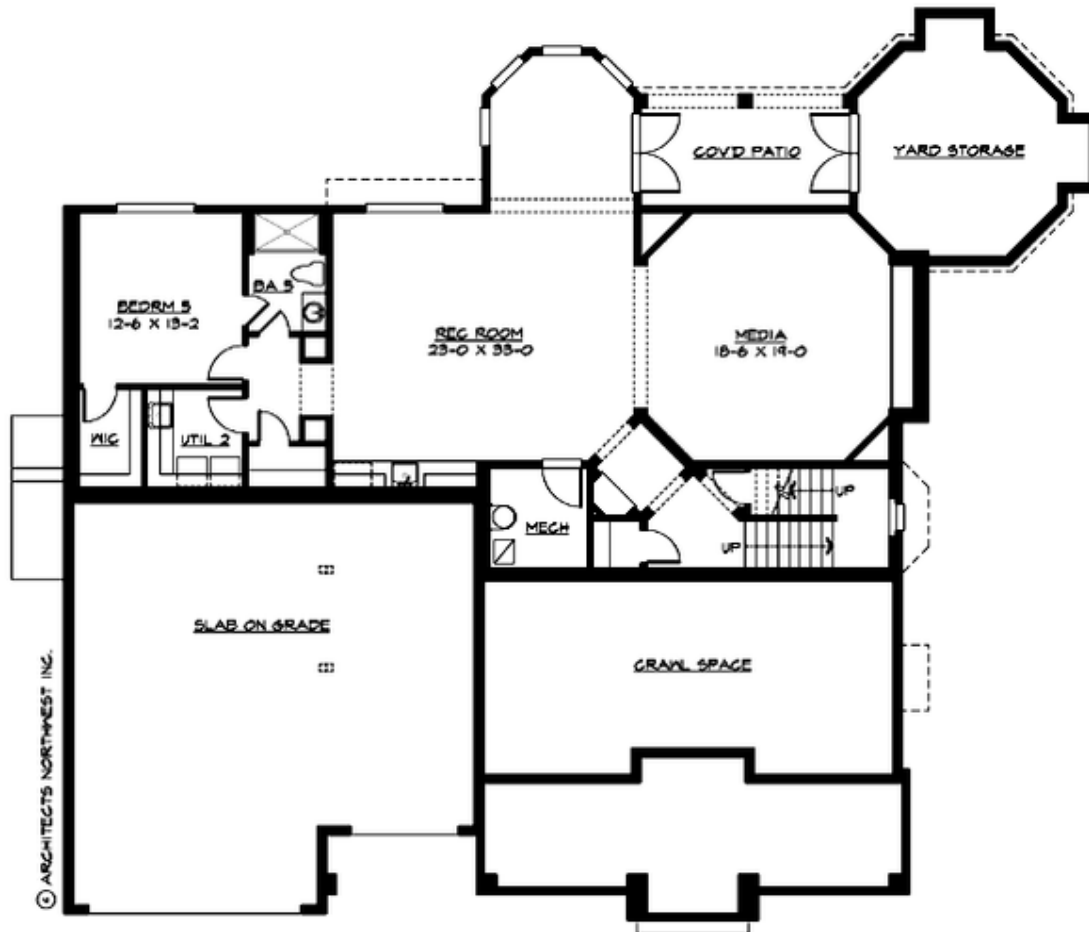
BLAKELEY WOODS HEIGHTS - PLAN M4590B3F-5DB

UPPER FLOOR



BLAKELEY WOODS HEIGHTS - PLAN M4590B3F-5DB

LOWER FLOOR





BLAKELEY WOODS HEIGHTS - PLAN M4590B3F-5DB

PLAN DETAILS

Area Summary

Total Area:	6555 sq. ft.
Main Floor:	2260 sq. ft.
Upper Floor:	2630 sq. ft.
Lower Floor:	1665 sq. ft.
Garage Floor:	945 sq. ft.

General Information

Stories:	3
Width:	79'-0"
Depth:	70'-0"
Height:	30'-0"

Architectural Style

Hampton
Shingle
Traditional

Number of Rooms

Bedrooms:	5
Full Baths:	5

Garage

Garage Size:	3
Garage Door Location:	Front

Roof Pitches

Primary:	8:12
Secondary:	12:12

Wall Heights

Main:	9'-0"
Upper:	9'-0"
3rd Floor:	0'-0"
Lower:	9'-0"

Foundation Type

Daylight Basement

Roof Framing

Combination

Floor Load

Live (lbs):	40 PSF
Dead (lbs):	10 PSF

Roof Load

Live (lbs):	25 PSF
Dead (lbs):	15 PSF
Wind:	85 MPH

Design Features

- Bonus Space @ Upper Floor & Lower Floor
- Den/Office
- Laundry Room @ Upper & Lower Floor
- Living & Family Room
- Master Bedroom @ Upper Floor Rear
- Rear Porch
- Wide Lot