

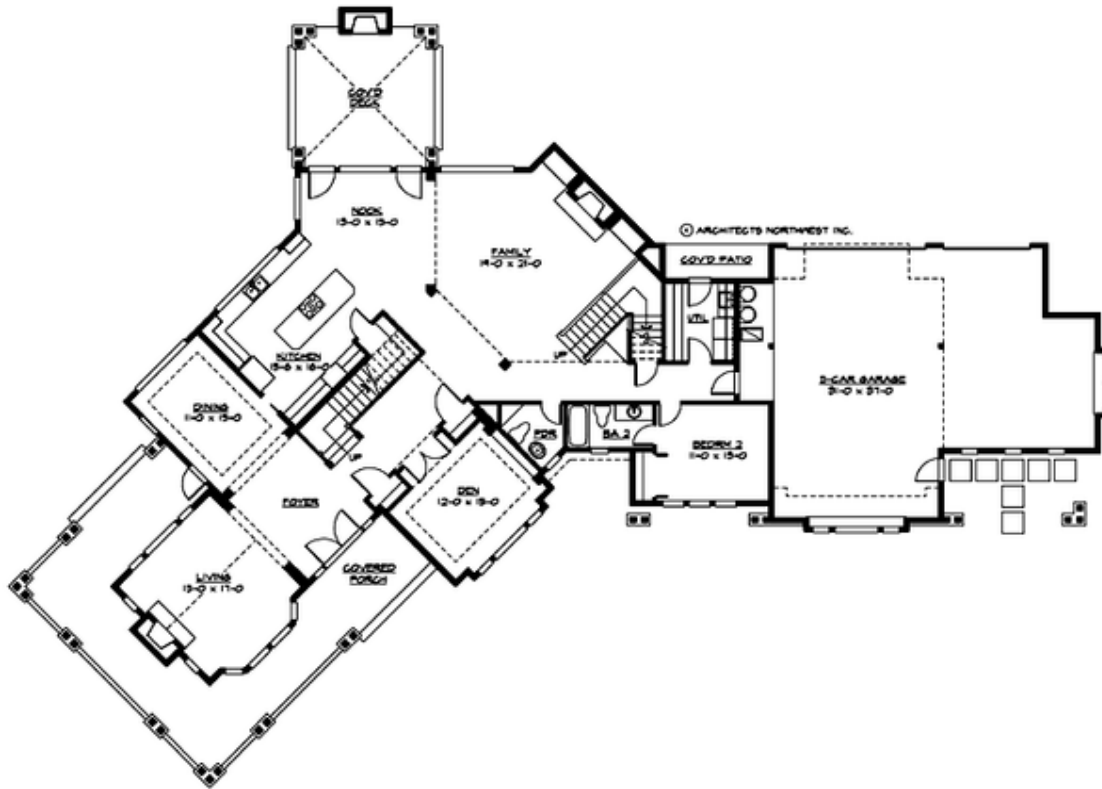
## WHIDBEY PARK - PLAN M4650A3RA-5

Total Area: 4650 sq. ft.  
Garage Area: 1075 sq. ft.  
Garage Area: 1075 sq. ft.  
Garage Size: 3  
Stories: 2  
Bedrooms: 5  
Full Baths: 4  
Half Baths: 1  
Width: 125'-0"  
Depth: 89'-0"  
Height: 30'-0"  
Foundation: Crawl Space



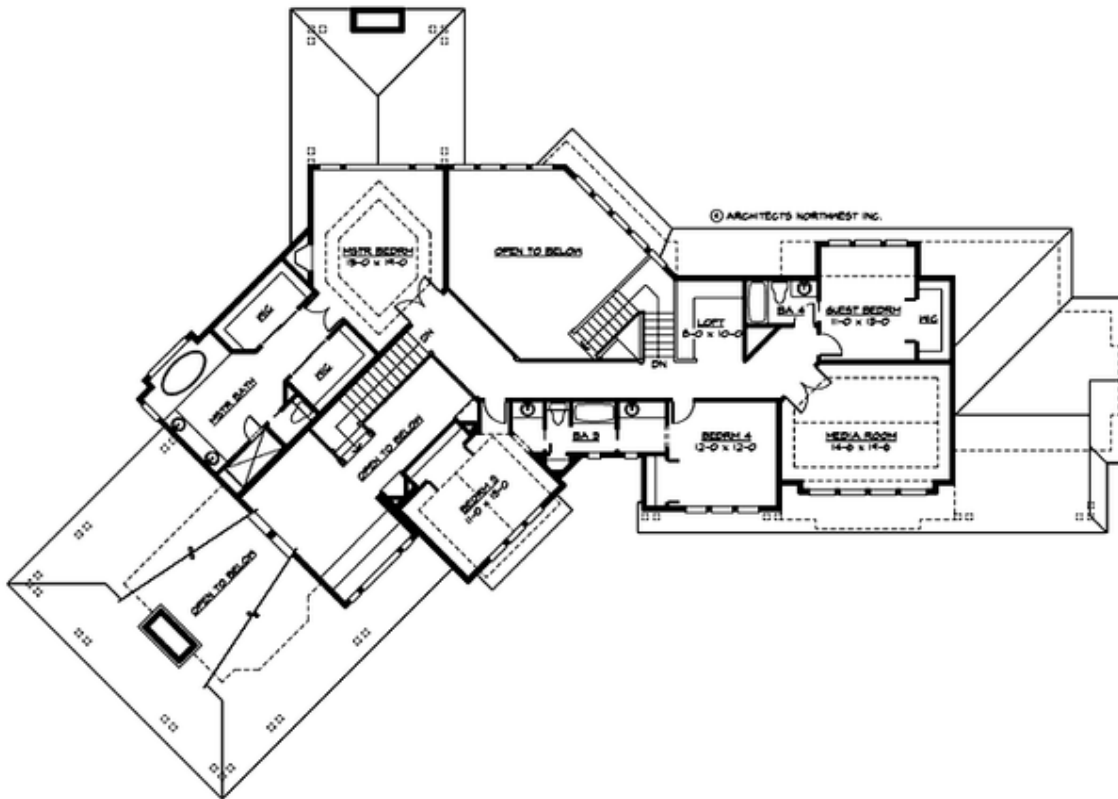
## WHIDBEY PARK - PLAN M4650A3RA-5

### MAIN FLOOR



## WHIDBEY PARK - PLAN M4650A3RA-5

### UPPER FLOOR



## WHIDBEY PARK - PLAN M4650A3RA-5

### PLAN DETAILS

#### Area Summary

Total Area: 4650 sq. ft.  
Main Floor: 2595 sq. ft.  
Upper Floor: 2055 sq. ft.  
Garage Floor: 1075 sq. ft.

#### General Information

Stories: 2  
Width: 125'-0"  
Depth: 89'-0"  
Height: 30'-0"

#### Architectural Style

Craftsman  
Lodge  
Northwest

#### Number of Rooms

Bedrooms: 5  
Full Baths: 4  
Half Baths: 1

#### Garage

Garage Size: 3  
Garage Door Location: Rear  
Garage Type: Angled

#### Roof Pitches

Primary: 8:12

#### Wall Heights

Main: 9'-0"  
Upper: 8'-0"  
3rd Floor: 0'-0"  
Lower: 0'-0"

#### Foundation Type

Crawl Space

#### Roof Framing

Trusses

#### Floor Load

Live (lbs): 40 PSF  
Dead (lbs): 10 PSF

#### Roof Load

Live (lbs): 25 PSF  
Dead (lbs): 15 PSF  
Wind: 85 MPH

#### Design Features

- Bonus Space @ Upper Floor
- Den/Office
- Laundry Room @ Main Floor
- Living & Family Room
- Master Bedroom @ Upper Floor Rear
- Wide Lot
- Wrap-Around Porch