

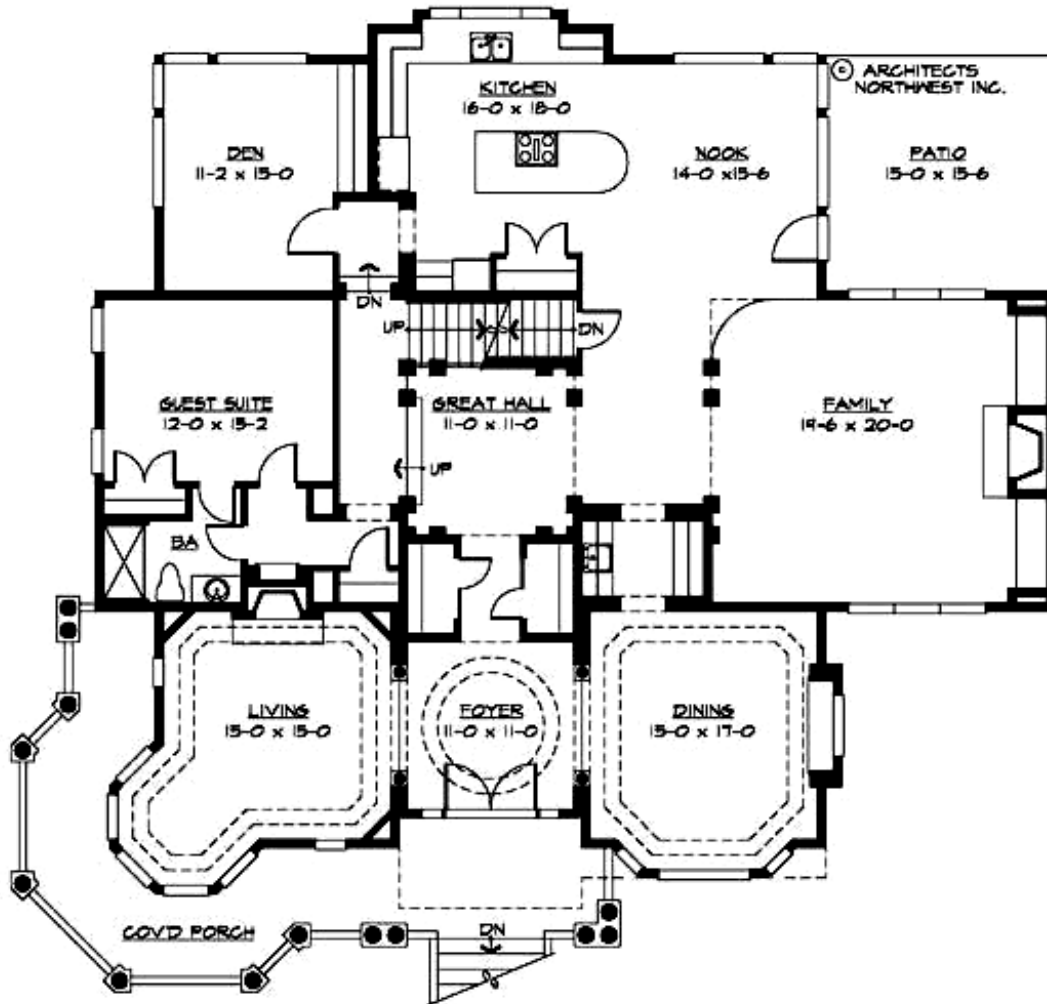
## MARYSVILLE - PLAN M5275A1FU2STU-0

Total Area: 5275 sq. ft.  
Garage Area: 1665 sq. ft.  
Garage Area: 1665 sq. ft.  
Garage Size: 3  
Stories: 3  
Bedrooms: 5  
Full Baths: 3  
Width: 68'-0"  
Depth: 64'-0"  
Height: 33'-6"  
Foundation: Crawl Space



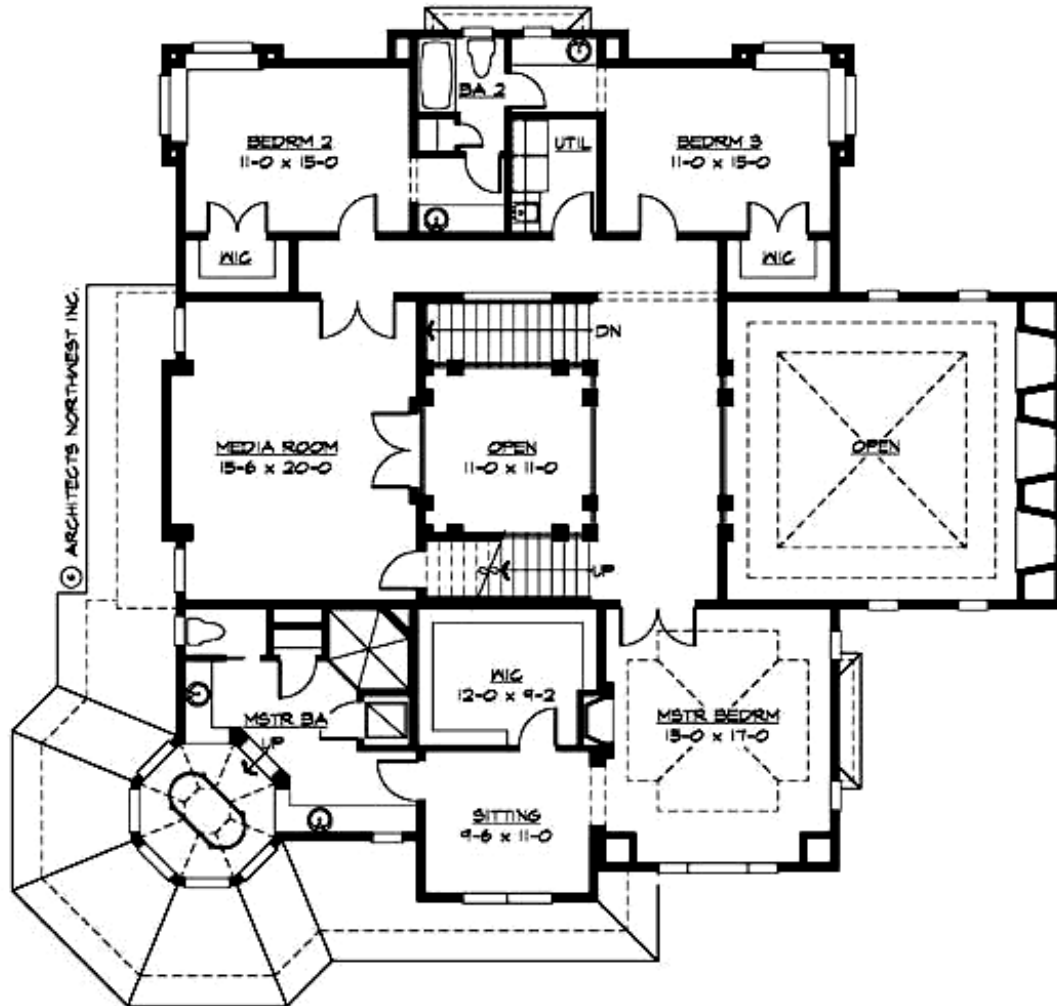
## MARYSVILLE - PLAN M5275A1FU2STU-0

### MAIN FLOOR



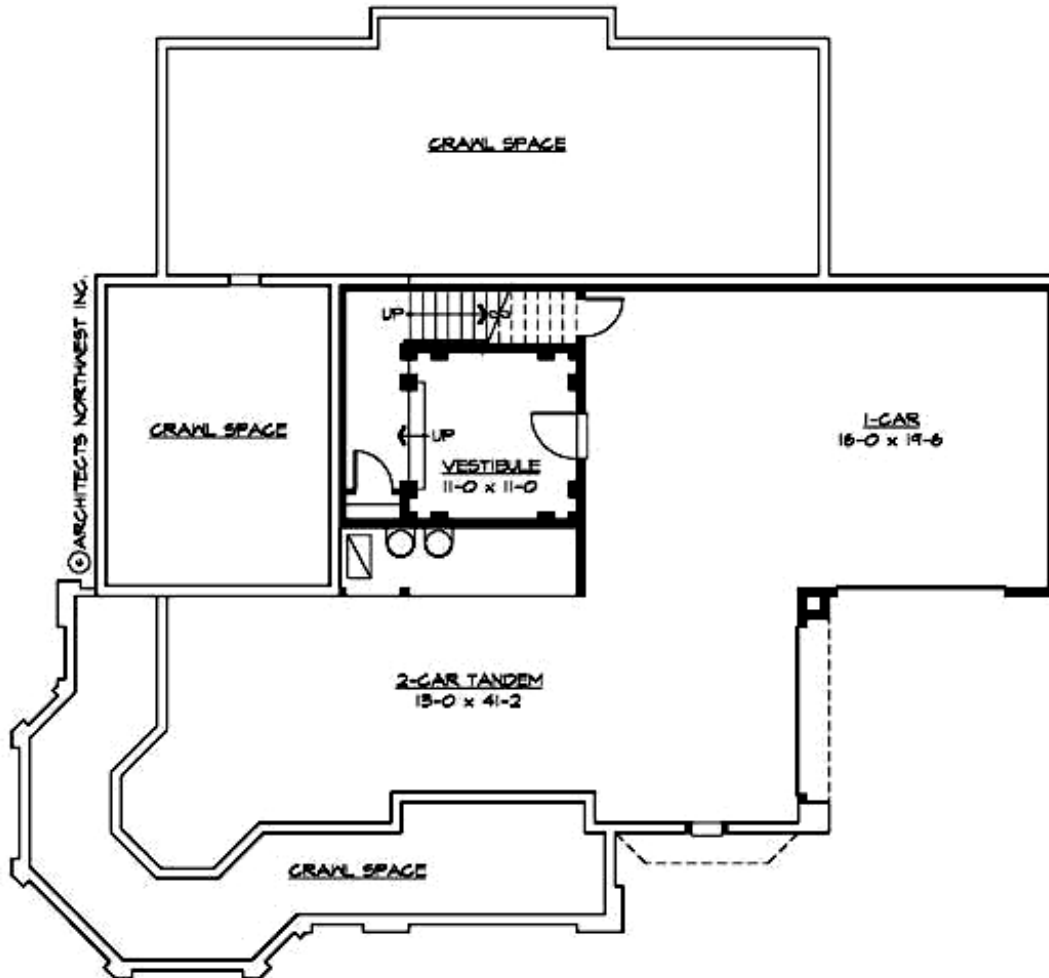
## MARYSVILLE - PLAN M5275A1FU2STU-0

### UPPER FLOOR



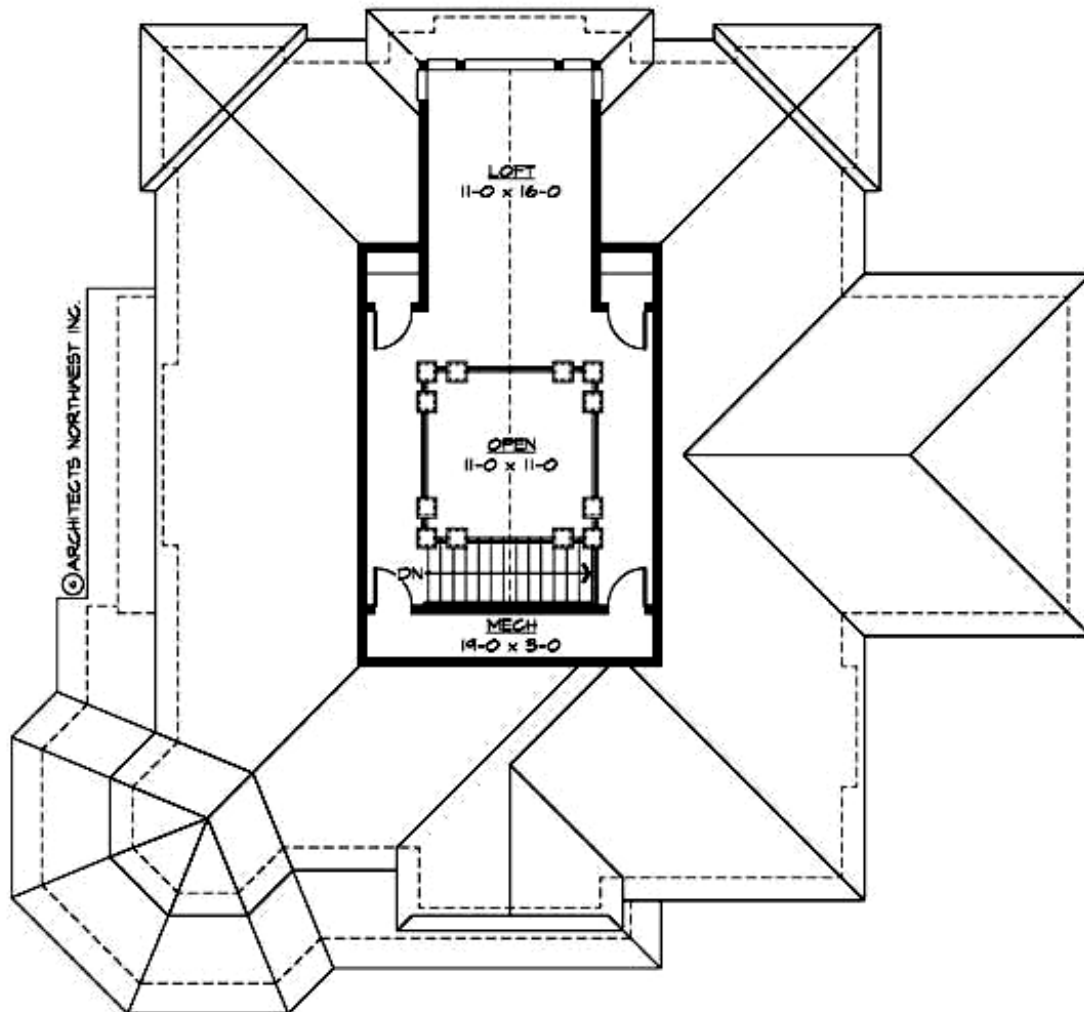
## MARYSVILLE - PLAN M5275A1FU2STU-0

### LOWER FLOOR



**MARYSVILLE - PLAN M5275A1FU2STU-0**

**THIRD FLOOR**





## MARYSVILLE - PLAN M5275A1FU2STU-0

### PLAN DETAILS

#### Area Summary

Total Area:	5275 sq. ft.
Main Floor:	2700 sq. ft.
Upper Floor:	2100 sq. ft.
3rd Floor:	475 sq. ft.
Garage Floor:	1665 sq. ft.

#### General Information

Stories:	3
Width:	68'-0"
Depth:	64'-0"
Height:	33'-6"

#### Architectural Style

Farmhouse  
Shingle  
Traditional

#### Number of Rooms

Bedrooms:	5
Full Baths:	3

#### Garage

Garage Size:	3
Garage Door Location:	Side
Garage Type:	Under

#### Roof Pitches

Primary:	8:12
Secondary:	4:12

#### Wall Heights

Main:	9'-0"
Upper:	8'-0"
3rd Floor:	0'-0"
Lower:	9'-0"

#### Foundation Type

Crawl Space

#### Roof Framing

Trusses

#### Floor Load

Live (lbs):	40 PSF
Dead (lbs):	10 PSF

#### Roof Load

Live (lbs):	25 PSF
Dead (lbs):	15 PSF
Wind:	85 MPH

#### Design Features

- Bonus Space @ Upper Floor
- Den/Office
- Laundry Room @ Upper Floor
- Living & Family Room
- Master Bedroom @ Upper Floor Front
- Wrap-Around Porch