

## STONEACRE - PLAN M5435A4S-0

Total Area: 5435 sq. ft.  
Garage Area: 905 sq. ft.  
Garage Area: 905 sq. ft.  
Garage Size: 4  
Stories: 3  
Bedrooms: 5  
Full Baths: 4  
Half Baths: 2  
Width: 80'-0"  
Depth: 78'-0"  
Height: 39'-6"  
Foundation: Crawl Space



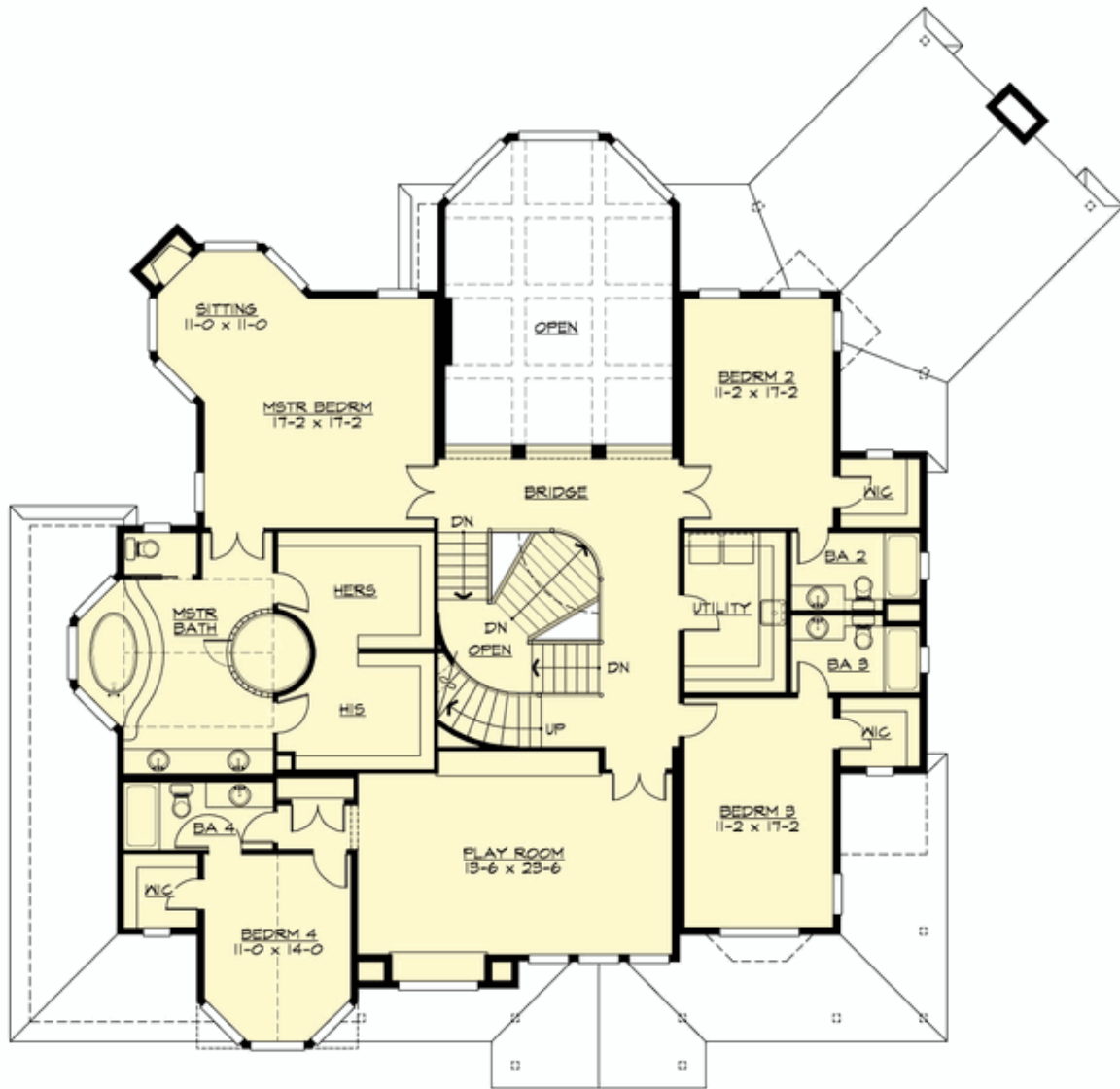
## STONEACRE - PLAN M5435A4S-0

### MAIN FLOOR



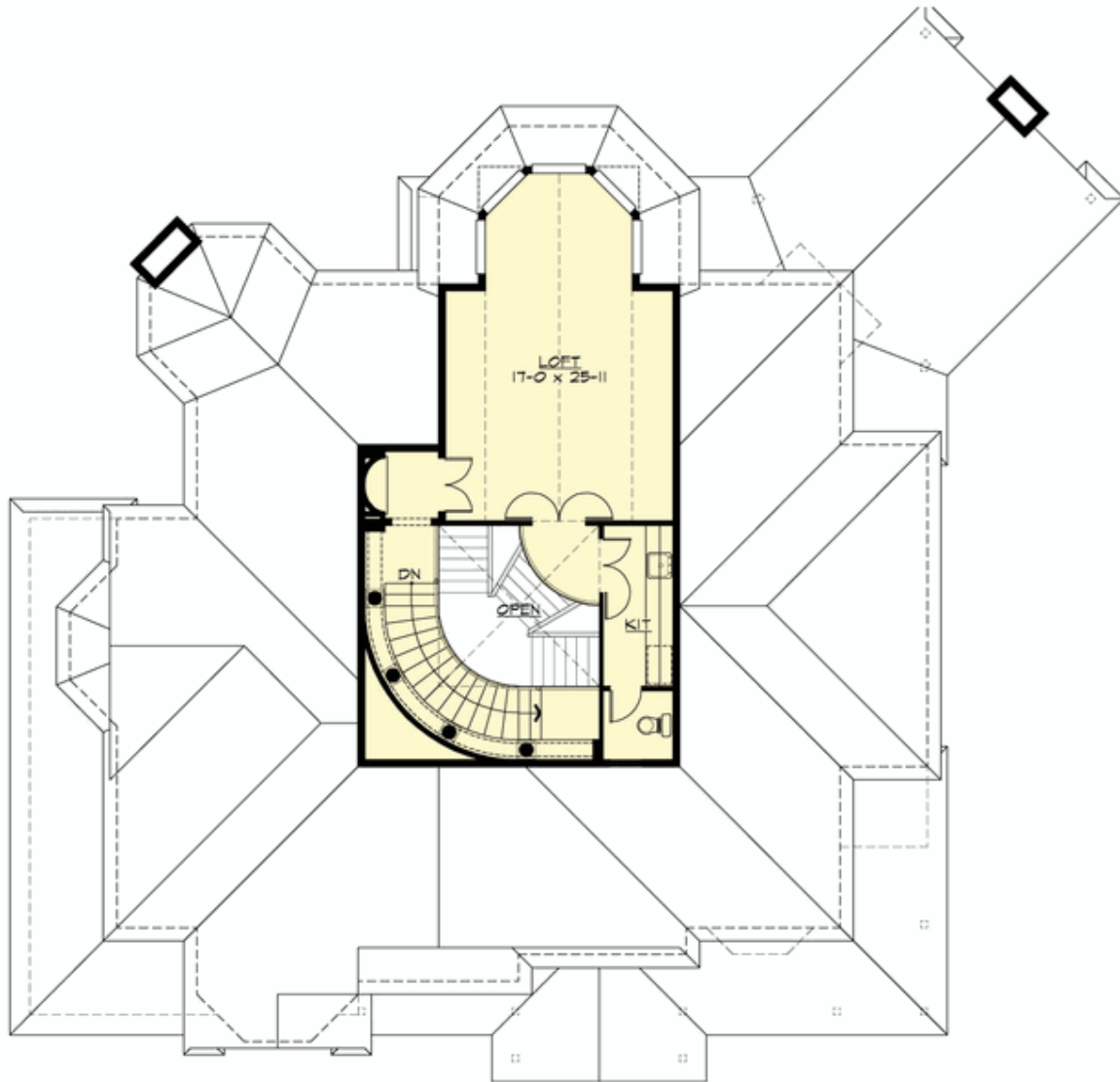
## STONEACRE - PLAN M5435A4S-0

### UPPER FLOOR



**STONEACRE - PLAN M5435A4S-0**

**THIRD FLOOR**



## STONEACRE - PLAN M5435A4S-0

### PLAN DETAILS

#### Area Summary

Total Area:	5435 sq. ft.
Main Floor:	2320 sq. ft.
Upper Floor:	2525 sq. ft.
3rd Floor:	590 sq. ft.
Garage Floor:	905 sq. ft.

#### General Information

Stories:	3
Width:	80'-0"
Depth:	78'-0"
Height:	39'-6"

#### Architectural Style

Farmhouse  
Lodge  
Traditional

#### Number of Rooms

Bedrooms:	5
Full Baths:	4
Half Baths:	2

#### Garage

Garage Size:	4
Garage Door Location:	Side

#### Roof Pitches

Primary:	10:12
Secondary:	4:12

#### Wall Heights

Main:	9'-0"
Upper:	9'-0"
3rd Floor:	9'-0"
Lower:	0'-0"

#### Foundation Type

Crawl Space

#### Roof Framing

Trusses

#### Floor Load

Live (lbs):	40 PSF
Dead (lbs):	10 PSF

#### Roof Load

Live (lbs):	25 PSF
Dead (lbs):	15 PSF
Wind:	85 MPH

#### Design Features

- Best Selling Plan
- Bonus Space @ Upper Floor
- Den/Office
- Front and Rear Porch
- Great Room
- Laundry Room @ Main & Upper Floor
- Master Bedroom @ Upper Floor Rear
- View Lot - Rear