

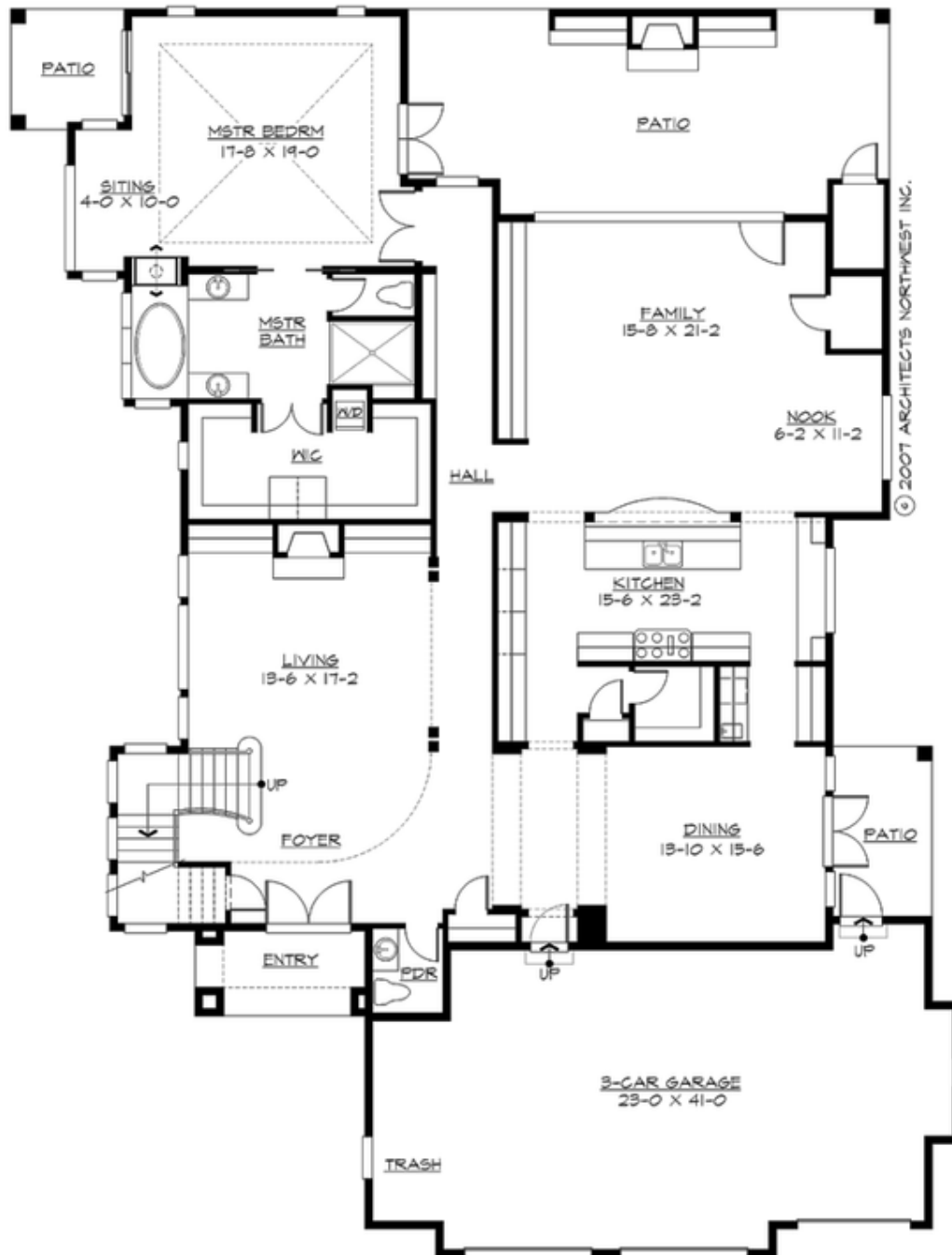
## WILLOWCREST - PLAN M5444A3F-0

Total Area: 5444 sq. ft.  
Garage Area: 841 sq. ft.  
Garage Area: 841 sq. ft.  
Garage Size: 3  
Stories: 2  
Bedrooms: 4  
Full Baths: 4  
Half Baths: 2  
Width: 67'-0"  
Depth: 88'-0"  
Height: 31'-6"  
Foundation: Crawl Space



## WILLOWCREST - PLAN M5444A3F-0

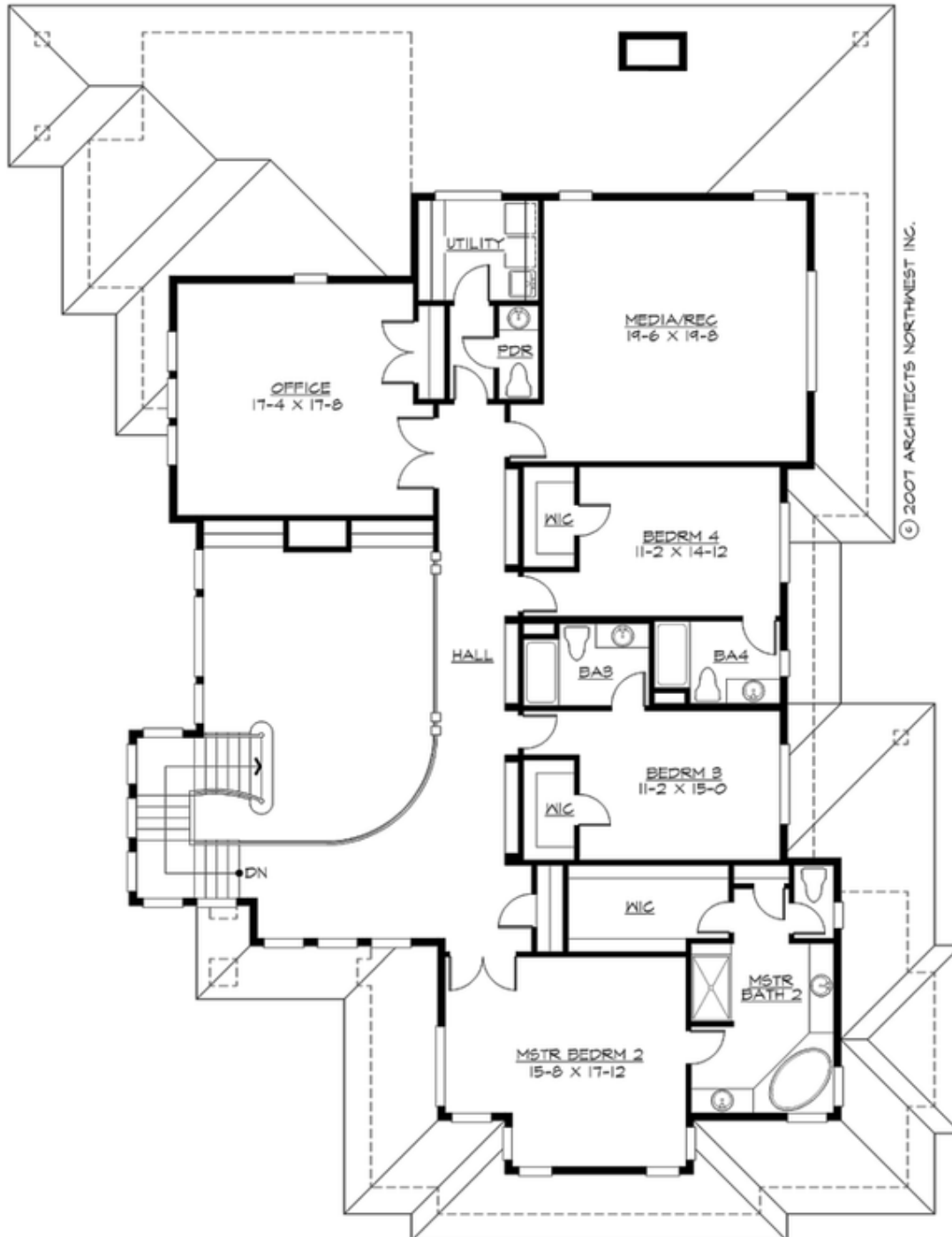
### MAIN FLOOR





**WILLOWCREST - PLAN M5444A3F-0**

**UPPER FLOOR**





## WILLOWCREST - PLAN M5444A3F-0

### PLAN DETAILS

#### Area Summary

Total Area: 5444 sq. ft.  
Main Floor: 2963 sq. ft.  
Upper Floor: 2481 sq. ft.  
Garage Floor: 841 sq. ft.

#### General Information

Stories: 2  
Width: 67'-0"  
Depth: 88'-0"  
Height: 31'-6"

#### Architectural Style

Contemporary  
Modern  
Prairie

#### Number of Rooms

Bedrooms: 4  
Full Baths: 4  
Half Baths: 2

#### Garage

Garage Size: 3  
Garage Door Location: Front

#### Roof Pitches

Primary: 6:12  
Secondary: 4:12

#### Wall Heights

Main: 10'-0"  
Upper: 9'-0"  
3rd Floor: 0'-0"  
Lower: 0'-0"

#### Foundation Type

Crawl Space

#### Roof Framing

Trusses

#### Floor Load

Live (lbs): 40 PSF  
Dead (lbs): 10 PSF

#### Roof Load

Live (lbs): 25 PSF  
Dead (lbs): 15 PSF  
Wind: 85 MPH

#### Design Features

- Bonus Space @ Upper Floor
- Den/Office
- Laundry Room @ Upper Floor
- Living & Family Room
- Luxury Plan
- Master Bedroom @ Main Floor Rear
- Narrow Lot
- Rear Porch