

## **CHATHAM COTTAGE - A1285A4FT-0**

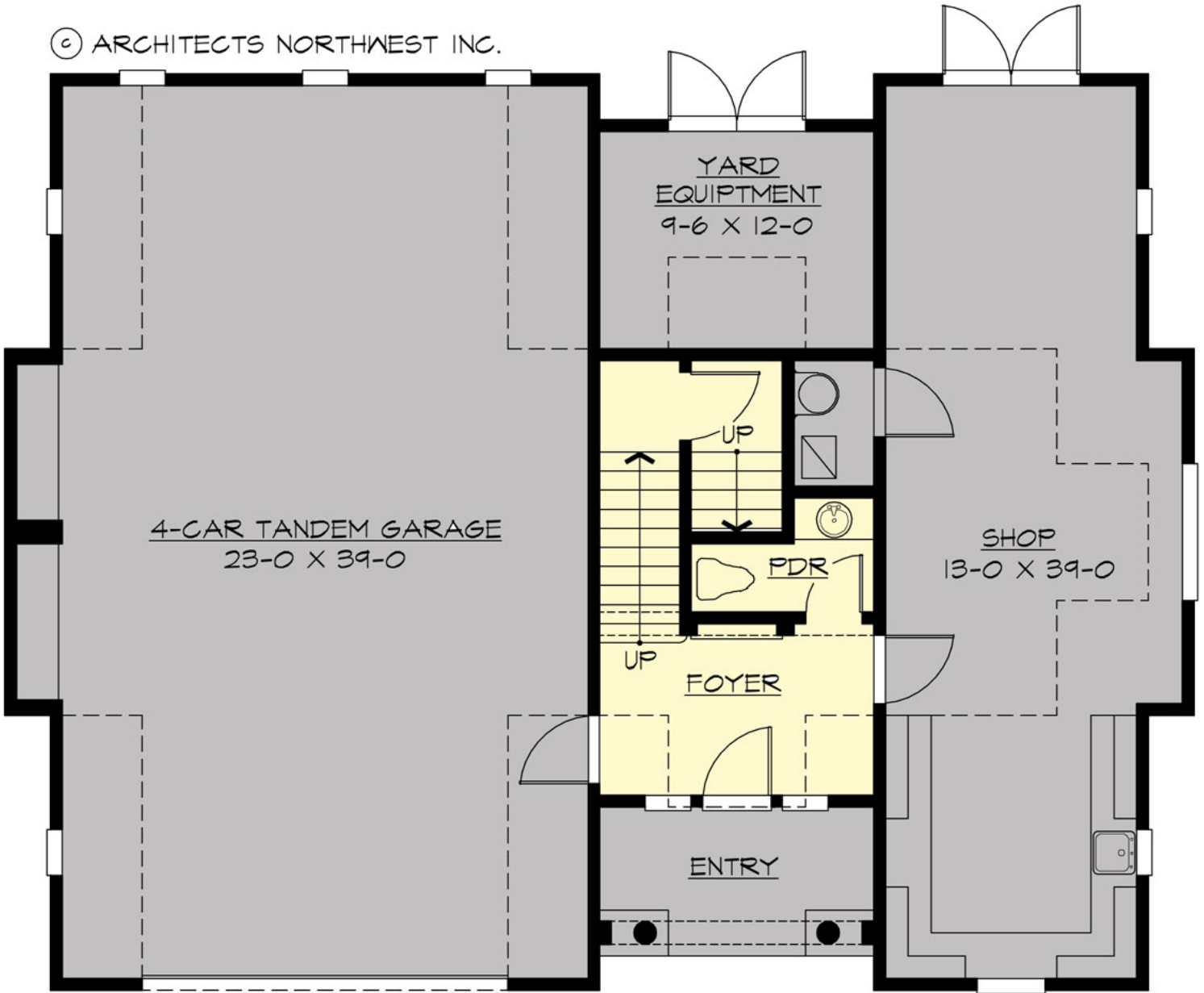
Total Area: **1285 Sq. Ft.**  
Garage Area: **995 Sq. Ft.**  
Garage Size: **4**  
Stories: **2**  
Bedrooms : **1**  
Full Baths : **1**  
Half Baths : **1**  
Width : **52`-0"**  
Depth : **40`-0"**  
Height : **31`-6"**  
Foundation : **Slab**



# CHATHAM COTTAGE - A1285A4FT-0

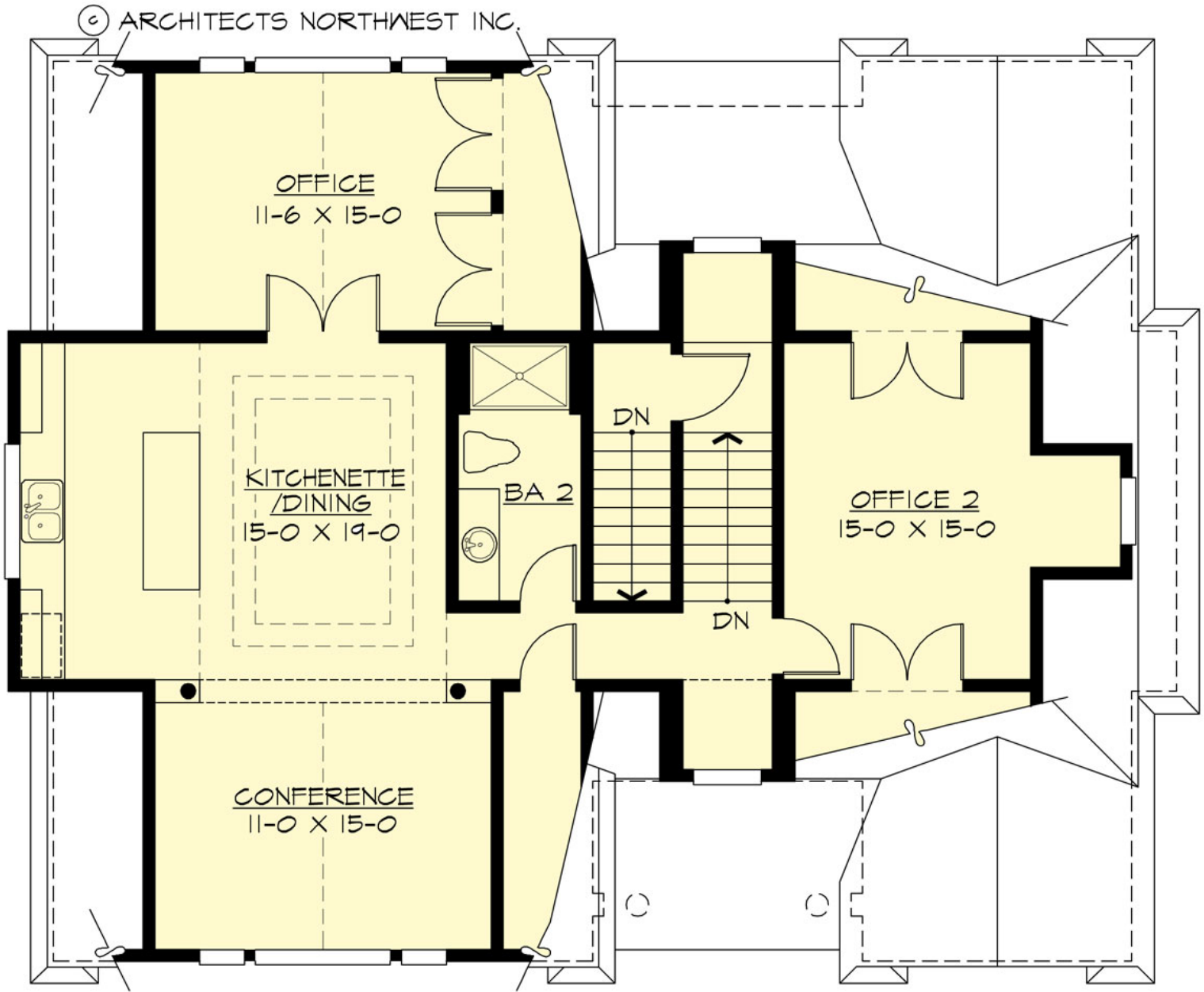
## MAIN FLOOR

© ARCHITECTS NORTHWEST INC.



# CHATHAM COTTAGE - A1285A4FT-0

## UPPER FLOOR



# CHATHAM COTTAGE - A1285A4FT-0

## PLAN DETAILS

### Area Summary

Total Area:	<b>1285 Sq. Ft.</b>
Main Floor:	<b>215 Sq. Ft.</b>
Upper Floor:	<b>1070 Sq. Ft.</b>
Garage Floor:	<b>995 Sq. Ft.</b>

### General Information

Stories:	<b>2</b>
Width:	<b>52`-0"</b>
Depth:	<b>40`-0"</b>
Height:	<b>31`-6"</b>

### Architectural Style

Cape Cod  
Carriage  
Hampton

### Number of Rooms

Bedrooms:	<b>1</b>
Full Baths:	<b>1</b>
Half Baths:	<b>1</b>

### Garage

Garage Size:	<b>4</b>
Garage Door Location:	<b>Front</b>
Garage Type:	<b>Tandem</b>

### Roof Pitches

Primary:	<b>10:12</b>
Secondary:	<b>28:12</b>

### Wall Heights

Main:	<b>10-0"</b>
Upper:	<b>9-0"</b>

### Foundation Type

Slab On Grade

### Roof Framing

### Floor Load

Live (lbs):	<b>40 PSF</b>
Dead (lbs):	<b>10 PSF</b>

### Roof Load

Live (lbs):	<b>25 PSF</b>
Dead (lbs):	<b>15 PSF</b>
Wind:	<b>85 MPH</b>

### Design Features

- Best Selling Plans
- Den/Office
- Great Room
- Cape Cod House Plans
- Carriage House Plans
- Hampton House Plans
- Affordable Home Designs
- Small House Plans