

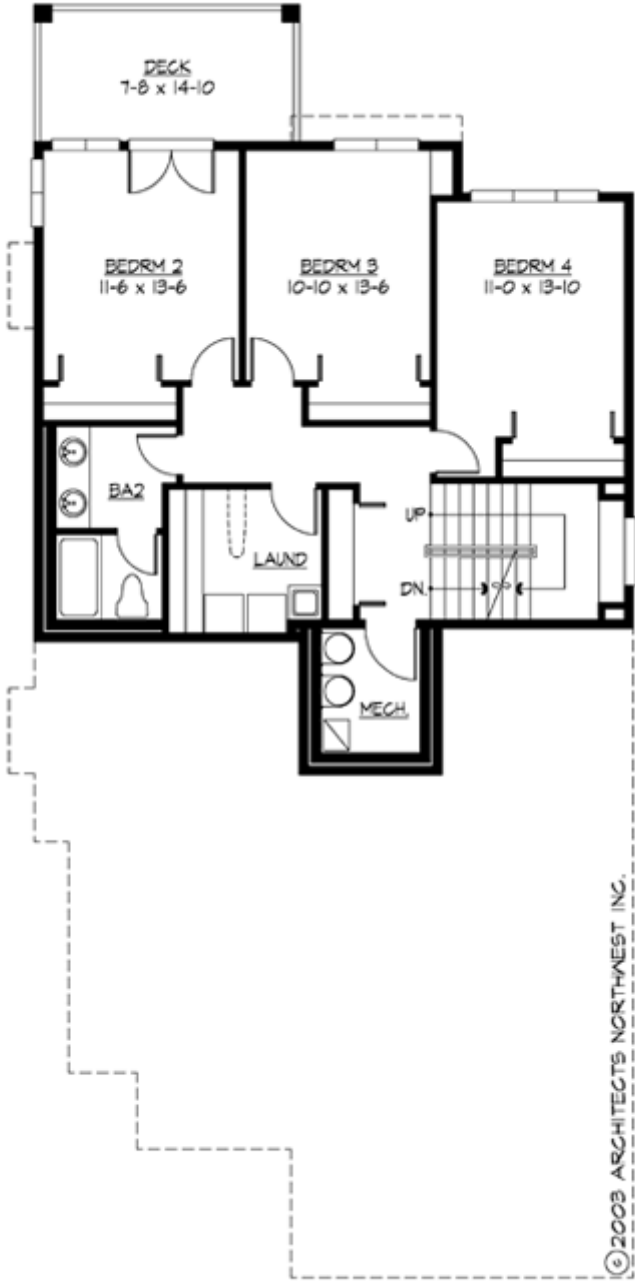
## **EMERY - M4411B3FT-0DB**

Total Area: **4427 Sq. Ft.**  
Garage Area: **597 Sq. Ft.**  
Garage Size: **3**  
Stories: **4**  
Bedrooms : **4**  
Full Baths : **3**  
Half Baths : **1**  
Width : **35`-0"**  
Depth : **68`-0"**  
Height : **23`-6"**  
Foundation : **Basement**



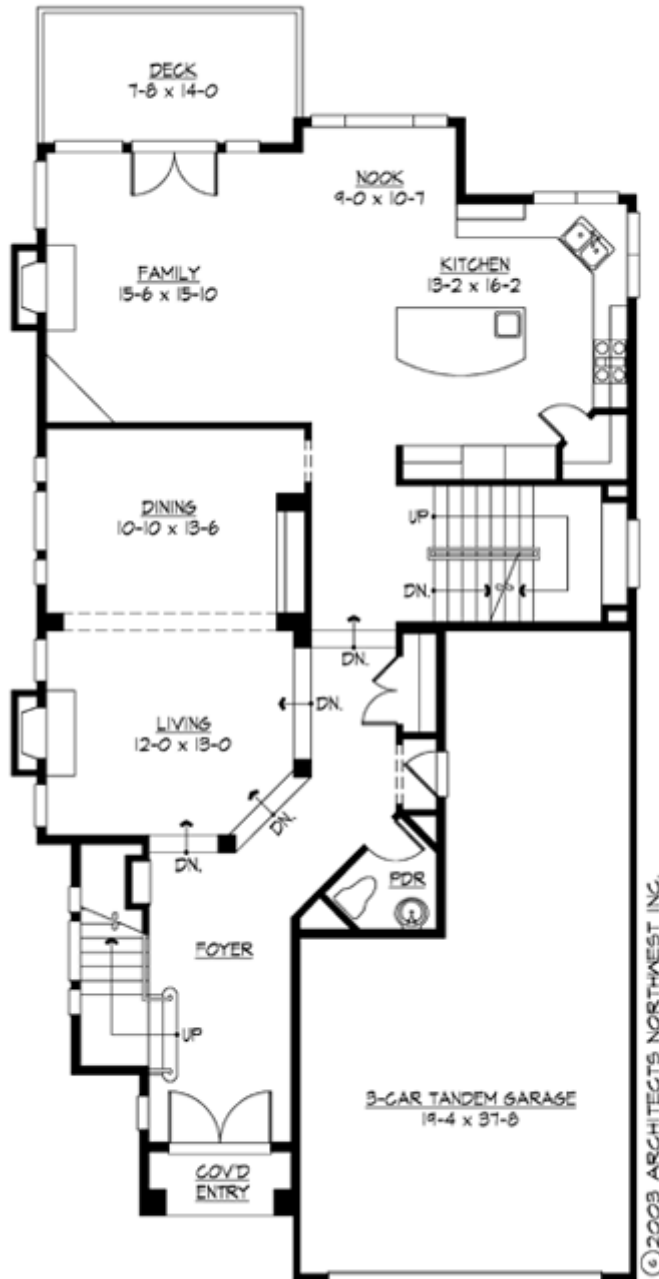
# EMERY - M4411B3FT-0DB

## MAIN FLOOR



# EMERY - M4411B3FT-0DB

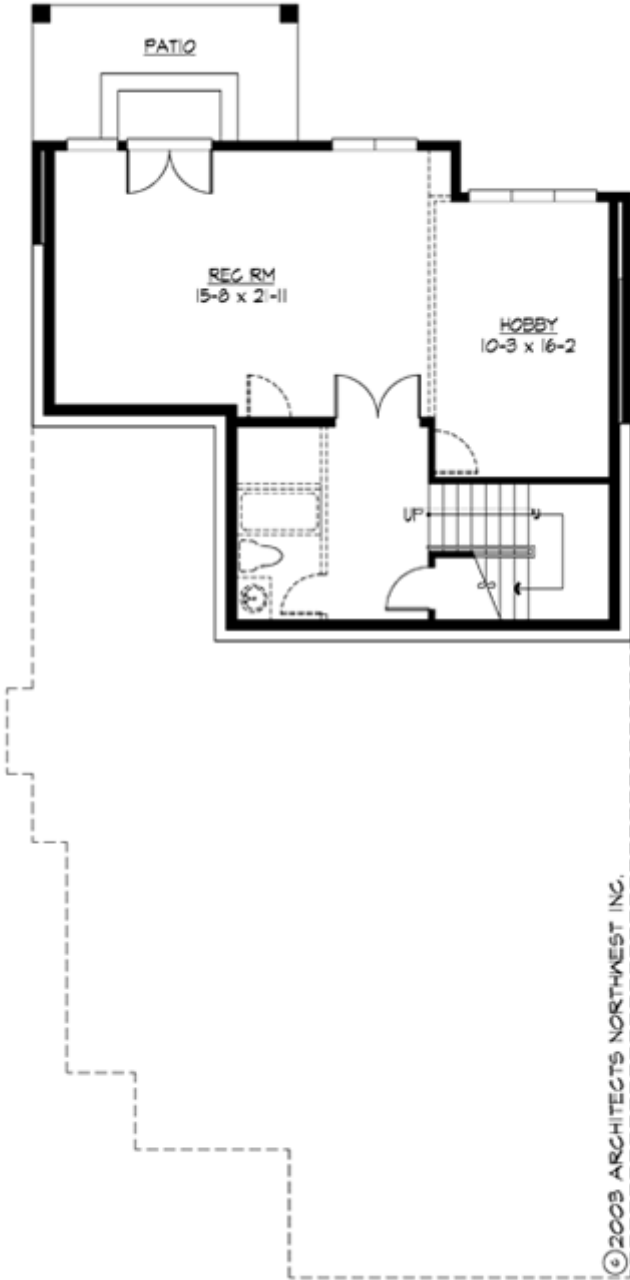
## UPPER FLOOR



© 2003 ARCHITECTS NORTHWEST INC.

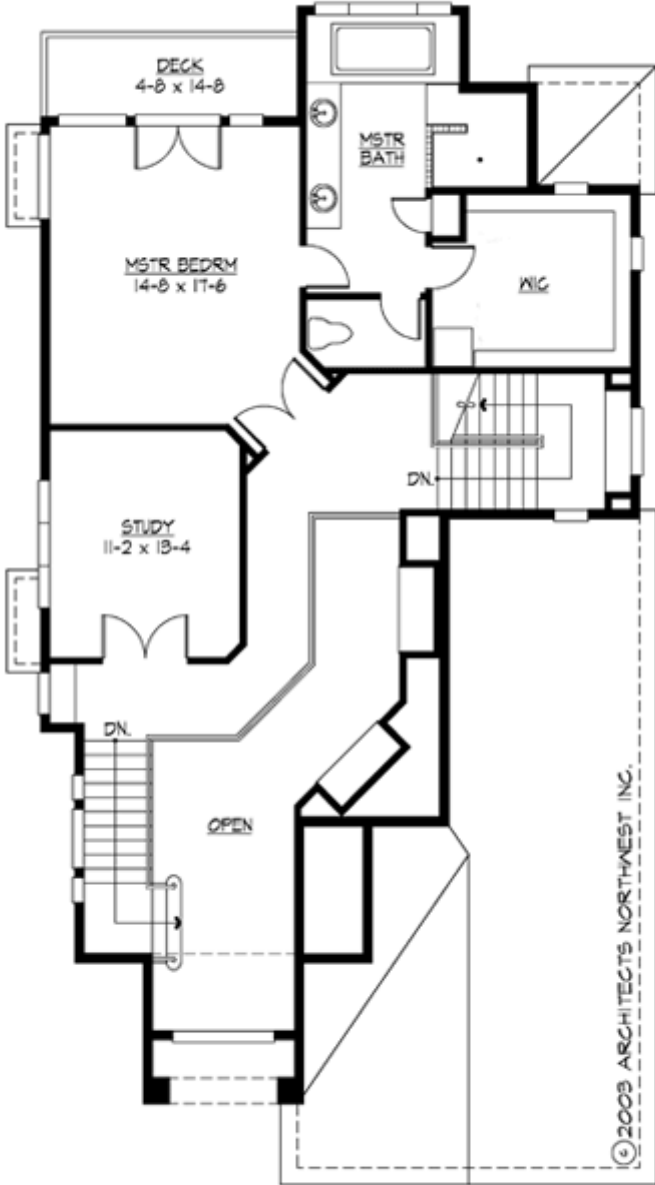
# EMERY - M4411B3FT-0DB

## LOWER FLOOR



# EMERY - M4411B3FT-0DB

## THIRD FLOOR



# EMERY - M4411B3FT-0DB

## PLAN DETAILS

### Area Summary

Total Area:	<b>4427 Sq. Ft.</b>
Main Floor:	<b>1549 Sq. Ft.</b>
Upper Floor:	<b>968 Sq. Ft.</b>
3rd Floor:	<b>860 Sq. Ft.</b>
Lower Floor:	<b>1050 Sq. Ft.</b>
Garage Floor:	<b>597 Sq. Ft.</b>

### General Information

Stories:	<b>4</b>
Width:	<b>35`-0"</b>
Depth:	<b>68`-0"</b>
Height:	<b>23`-6"</b>

### Architectural Style

Chateau  
European  
Traditional

### Number of Rooms

Bedrooms:	<b>4</b>
Full Baths:	<b>3</b>
Half Baths:	<b>1</b>

### Garage

Garage Size:	<b>3</b>
Garage Door Location:	<b>Front</b>
Garage Type:	<b>Tandem</b>

### Roof Pitches

Primary:	<b>6:12</b>
Secondary:	<b>4:12</b>

### Wall Heights

Main:	<b>9-0"</b>
Upper:	<b>9-0"</b>
Lower:	<b>9-0"</b>
Third:	<b>8-0"</b>

### Foundation Type

Daylight Basement

### Roof Framing

Trusses

### Floor Load

Live (lbs):	<b>40 PSF</b>
Dead (lbs):	<b>10 PSF</b>

### Roof Load

Live (lbs):	<b>25 PSF</b>
Dead (lbs):	<b>15 PSF</b>
Wind:	<b>85 MPH</b>

### Design Features

- Bonus Space @ & Lower Floor
- Den/Office
- Rear Porch
- Great Room
- Laundry Room @ & Lower Floor
- Master Bedroom @ Upper Floor Rear
- Chateau House Plans
- European House Plans
- Traditional House Plans
- Narrow Lot House Plans