

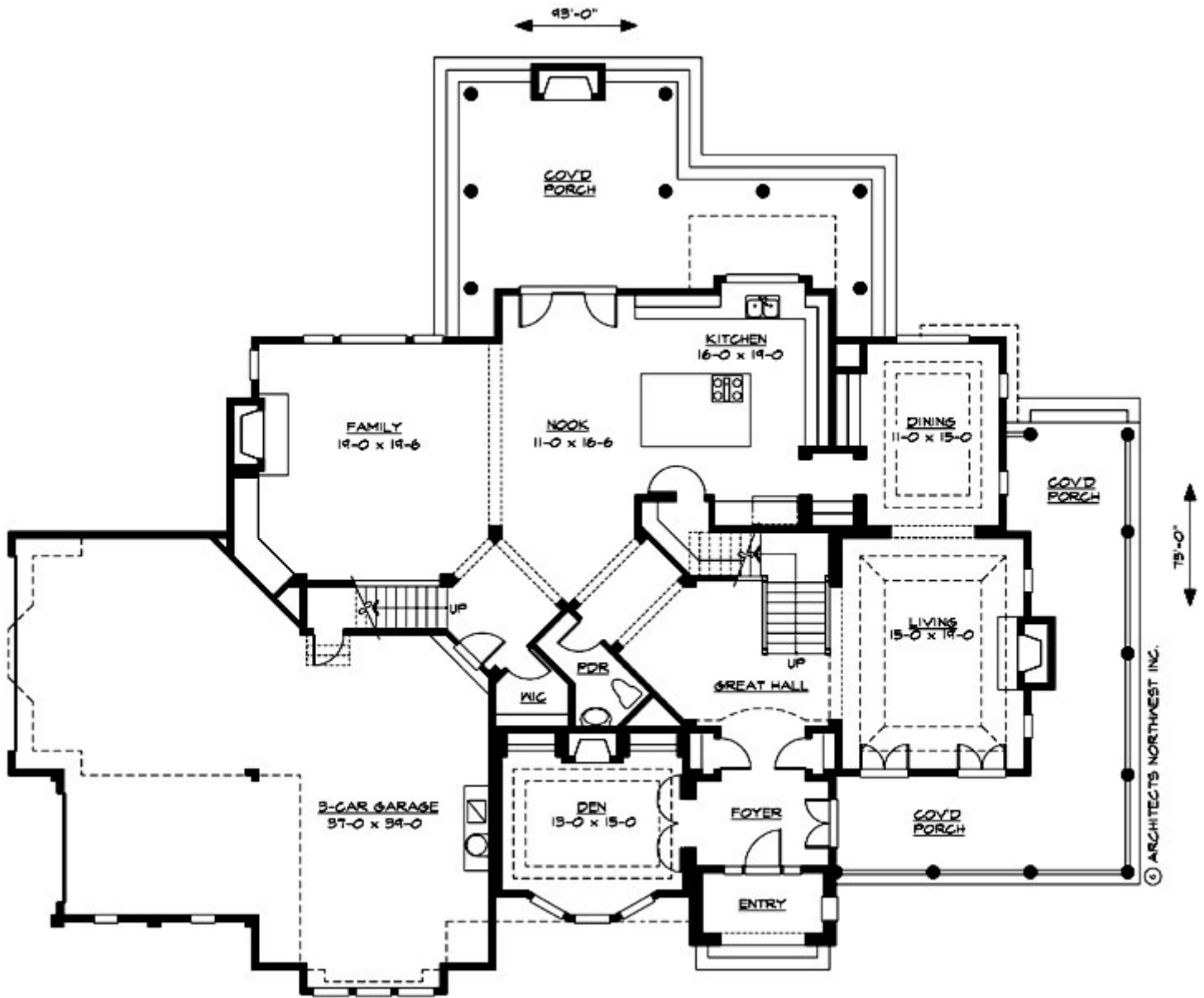
## **HAWTHORN POINTE - M4720A3S-0**

Total Area: **5045 Sq. Ft.**  
Garage Area: **1160 Sq. Ft.**  
Garage Size: **3**  
Stories: **2**  
Bedrooms : **4**  
Full Baths : **3**  
Half Baths : **1**  
Width : **93`-0"**  
Depth : **75`-0"**  
Height : **34`-6"**  
Foundation : **Crawl Space**



# HAWTHORN POINTE - M4720A3S-0

## MAIN FLOOR

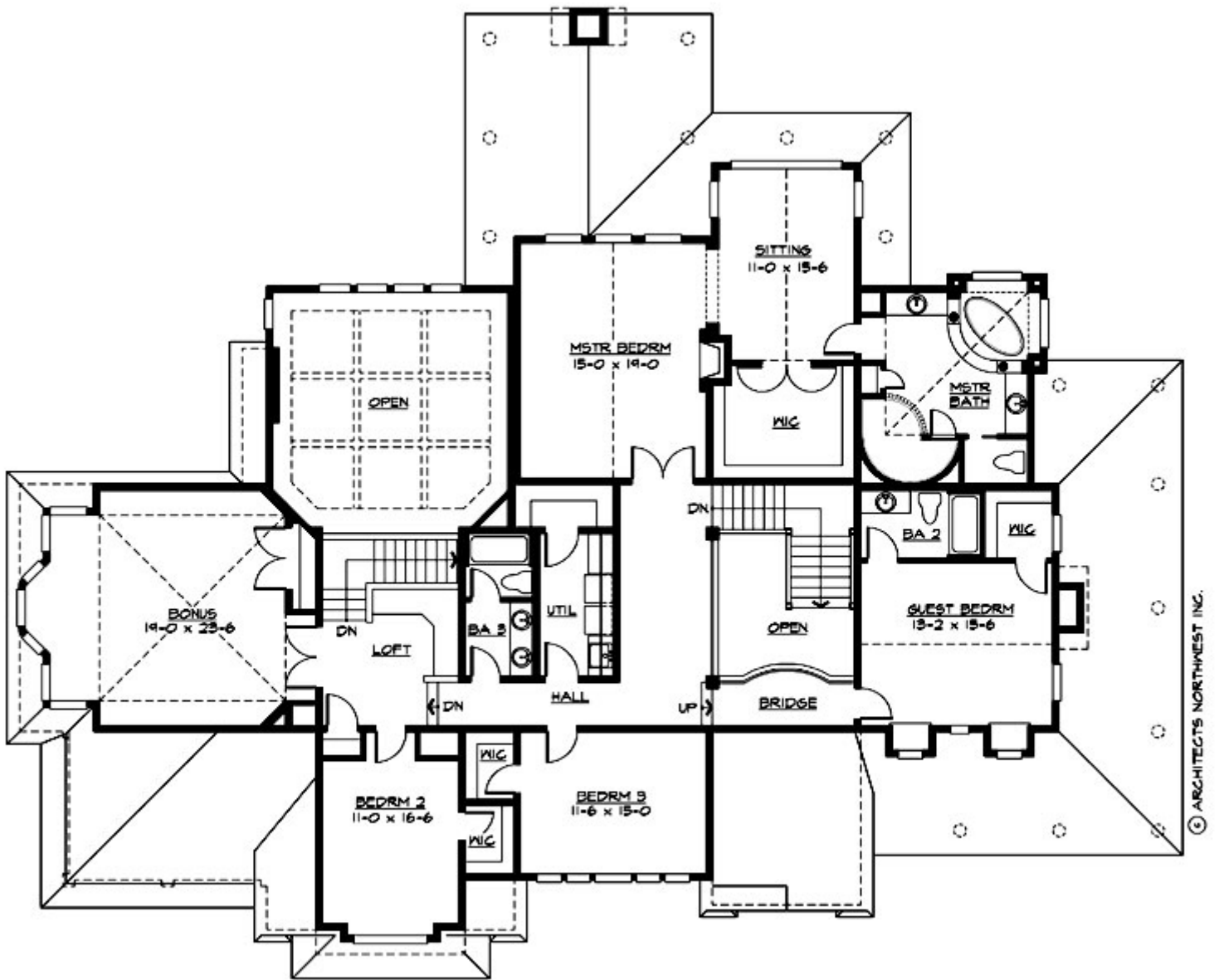


© ARCHITECTS NORTHWEST INC.

MAIN FLOOR PLAN

# HAWTHORN POINTE - M4720A3S-0

## UPPER FLOOR



UPPER FLOOR PLAN

# HAWTHORN POINTE - M4720A3S-0

## PLAN DETAILS

### Area Summary

Total Area:	<b>5045 Sq. Ft.</b>
Main Floor:	<b>2415 Sq. Ft.</b>
Upper Floor:	<b>2630 Sq. Ft.</b>
Garage Floor:	<b>1160 Sq. Ft.</b>

### General Information

Stories:	<b>2</b>
Width:	<b>93`-0"</b>
Depth:	<b>75`-0"</b>
Height:	<b>34`-6"</b>

### Architectural Style

Hampton  
Shingle  
Traditional

### Number of Rooms

Bedrooms:	<b>4</b>
Full Baths:	<b>3</b>
Half Baths:	<b>1</b>

### Garage

Garage Size:	<b>3</b>
Garage Door Location:	<b>Side</b>

### Roof Pitches

Primary:	<b>10:12</b>
Secondary:	<b>12:12</b>

### Wall Heights

Main:	<b>9-0"</b>
Upper:	<b>9-0"</b>

### Foundation Type

Crawl Space

### Roof Framing

Combination

### Floor Load

Live (lbs):	<b>40 PSF</b>
Dead (lbs):	<b>10 PSF</b>

### Roof Load

Live (lbs):	<b>25 PSF</b>
Dead (lbs):	<b>15 PSF</b>
Wind:	<b>85 MPH</b>

### Design Features

- Bonus Space @ & Upper Floor
- Den/Office
- Wrap-Around Porch
- Great Room
- Laundry Room @ & Upper Floor
- Master Bedroom @ Upper Floor Rear
- Hampton House Plans
- Shingle House Plans
- Traditional House Plans
- Wide Lot House Plans