

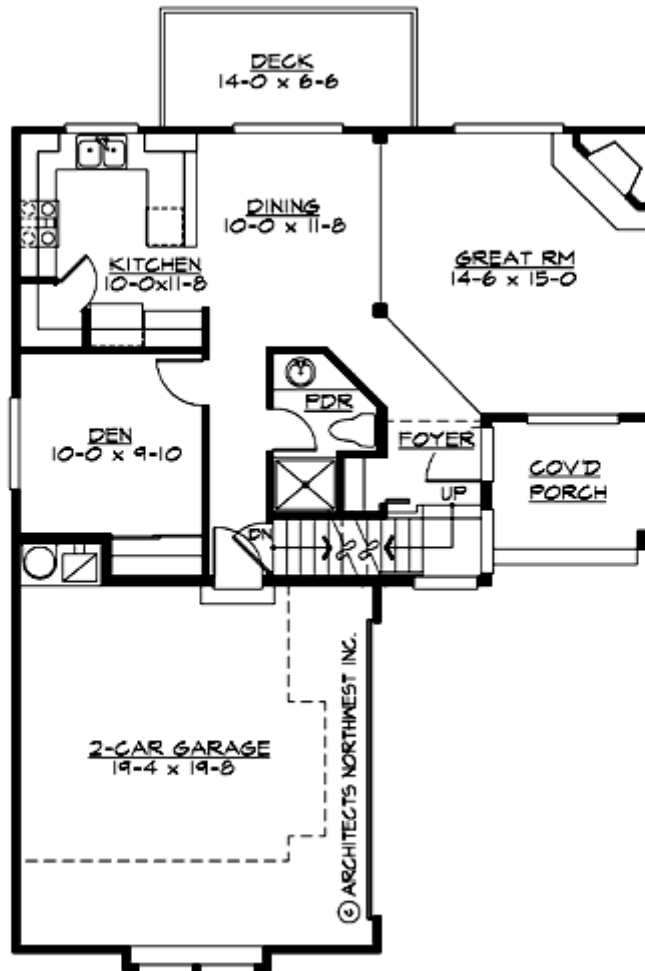
## **HOLLY PARK - M1743A2S-0DB**

Total Area: **2549 Sq. Ft.**  
Garage Area: **400 Sq. Ft.**  
Garage Size: **2**  
Stories: **3**  
Bedrooms : **4**  
Full Baths : **4**  
Half Baths :  
Width : **35`-0"**  
Depth : **45`-0"**  
Height : **23`-6"**  
Foundation : **Basement**



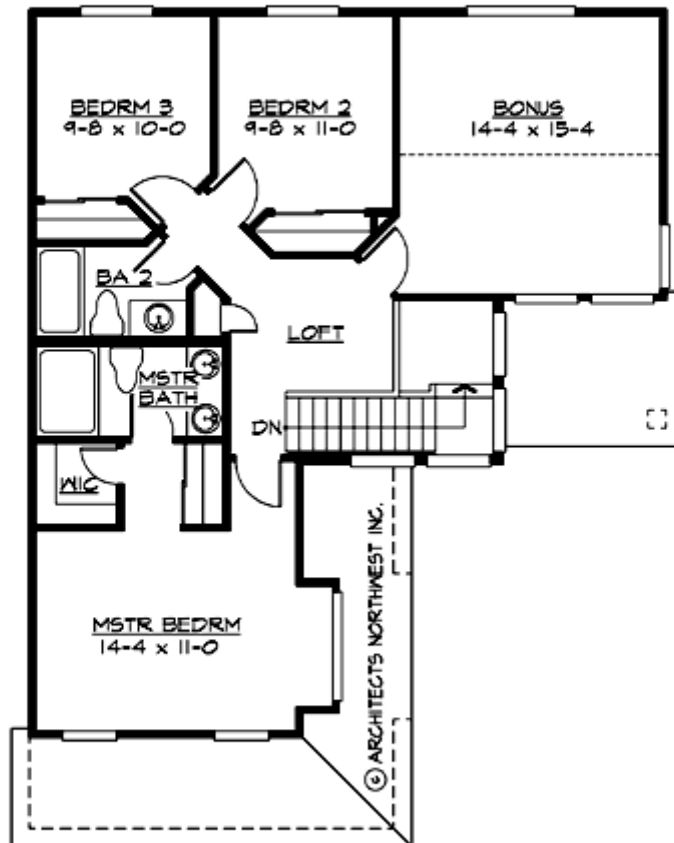
# HOLLY PARK - M1743A2S-0DB

## MAIN FLOOR



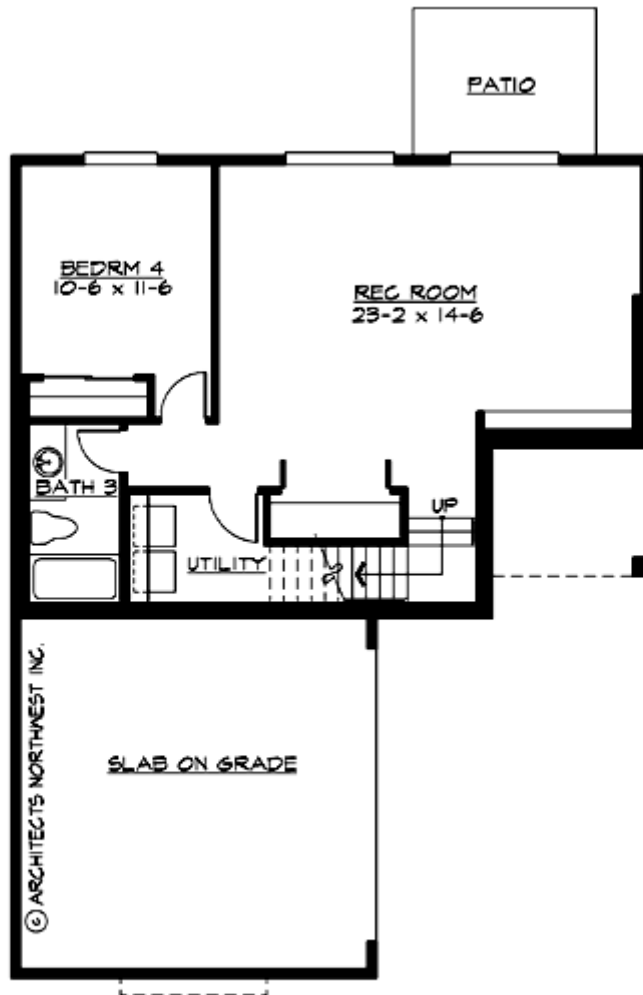
# HOLLY PARK - M1743A2S-0DB

## UPPER FLOOR



# HOLLY PARK - M1743A2S-0DB

## LOWER FLOOR



# HOLLY PARK - M1743A2S-0DB

## PLAN DETAILS

### Area Summary

Total Area:	<b>2549 Sq. Ft.</b>
Main Floor:	<b>783 Sq. Ft.</b>
Upper Floor:	<b>960 Sq. Ft.</b>
Lower Floor:	<b>806 Sq. Ft.</b>
Garage Floor:	<b>400 Sq. Ft.</b>

### General Information

Stories:	<b>3</b>
Width:	<b>35`-0"</b>
Depth:	<b>45`-0"</b>
Height:	<b>23`-6"</b>

### Architectural Style

Craftsman  
Farmhouse  
Northwest

### Number of Rooms

Bedrooms:	<b>4</b>
Full Baths:	<b>4</b>

### Garage

Garage Size:	<b>2</b>
Garage Door Location:	<b>Side</b>

### Roof Pitches

Primary:	<b>6:12</b>
----------	-------------

### Wall Heights

Main:	<b>8-0"</b>
Upper:	<b>8-0"</b>
Lower:	<b>8-0"</b>

### Foundation Type

Daylight Basement

### Roof Framing

Trusses

### Floor Load

Live (lbs):	<b>40 PSF</b>
Dead (lbs):	<b>10 PSF</b>

### Roof Load

Live (lbs):	<b>25 PSF</b>
Dead (lbs):	<b>15 PSF</b>
Wind:	<b>85 MPH</b>

### Design Features

- Bonus Space @ , Upper & Lower Floor
- Den/Office
- Front Porch
- Great Room
- Laundry Room @ & Lower Floor
- Master Bedroom @ Upper Floor Front
- Craftsman House Plans
- Farmhouse Home Plans
- Northwest Floor Plans
- Narrow Lot House Plans