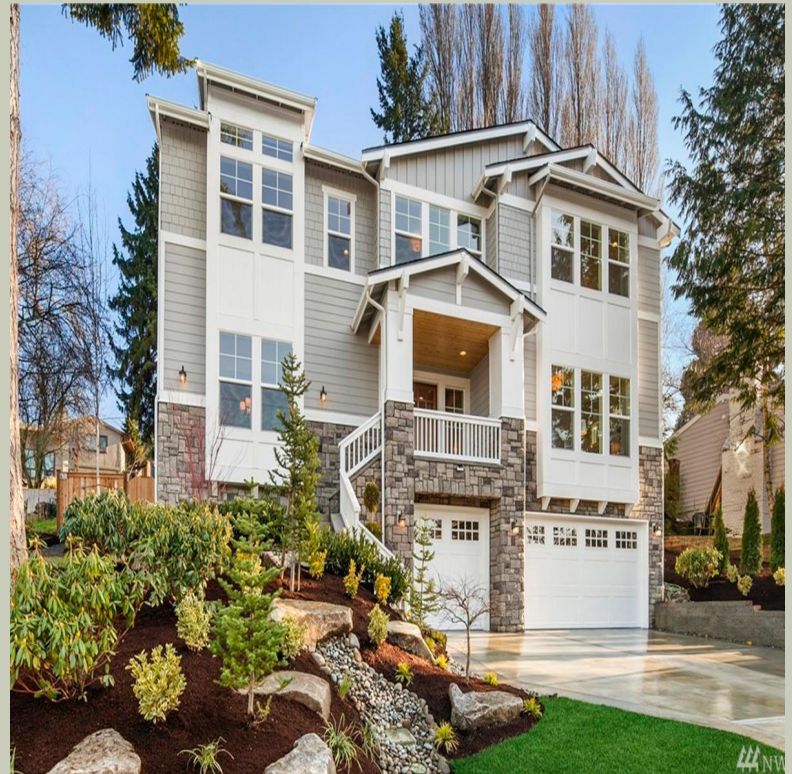


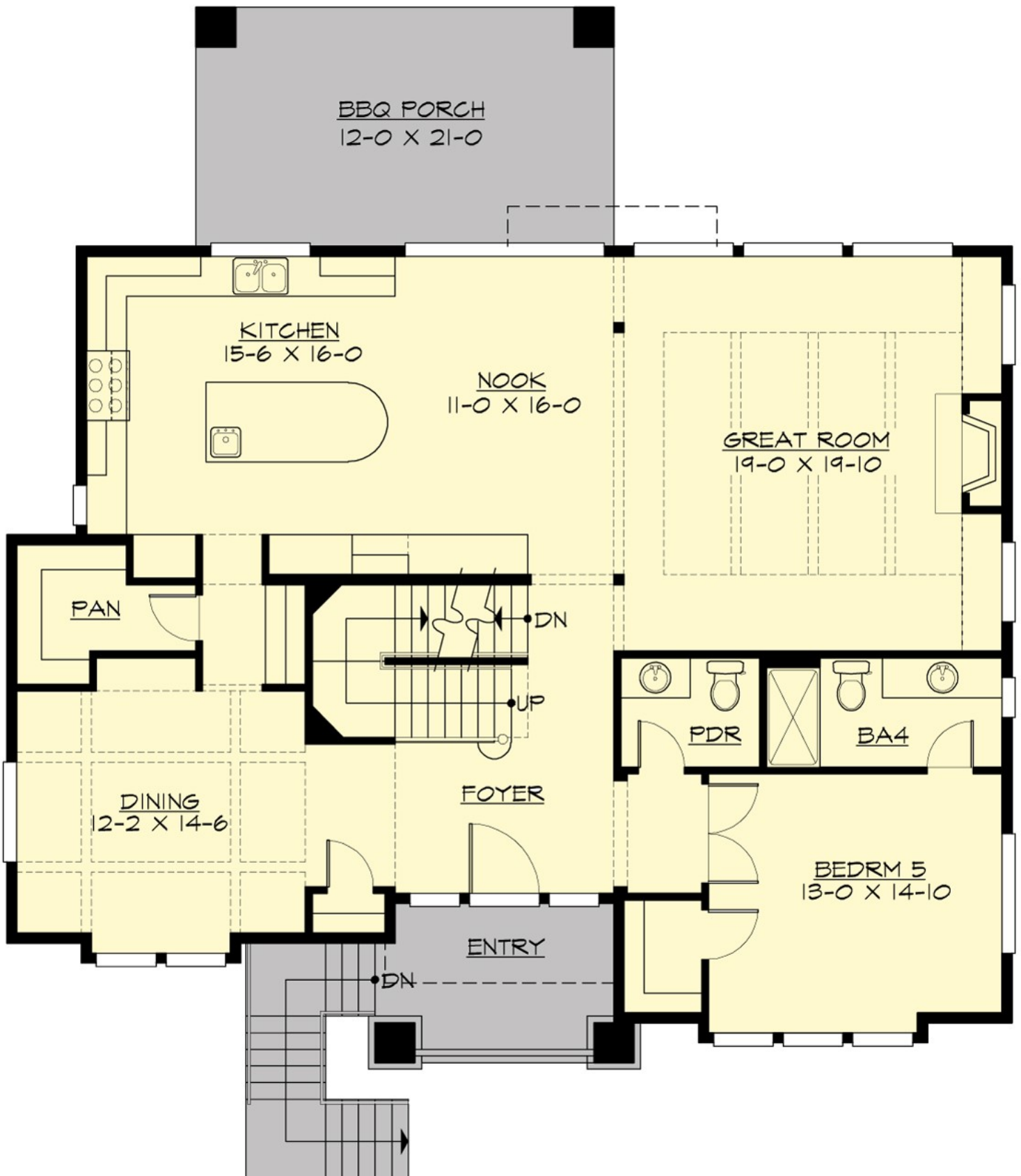
## MACINNESS - M3949A3FU-0DB

Total Area: **3949 Sq. Ft.**  
Garage Area: **700 Sq. Ft.**  
Garage Size: **3**  
Stories: **3**  
Bedrooms : **5**  
Full Baths : **4**  
Half Baths : **1**  
Width : **50`-6"**  
Depth : **51`-0"**  
Height : **26`-9"**  
Foundation : **Basement**



# MACINNESS - M3949A3FU-0DB

## MAIN FLOOR



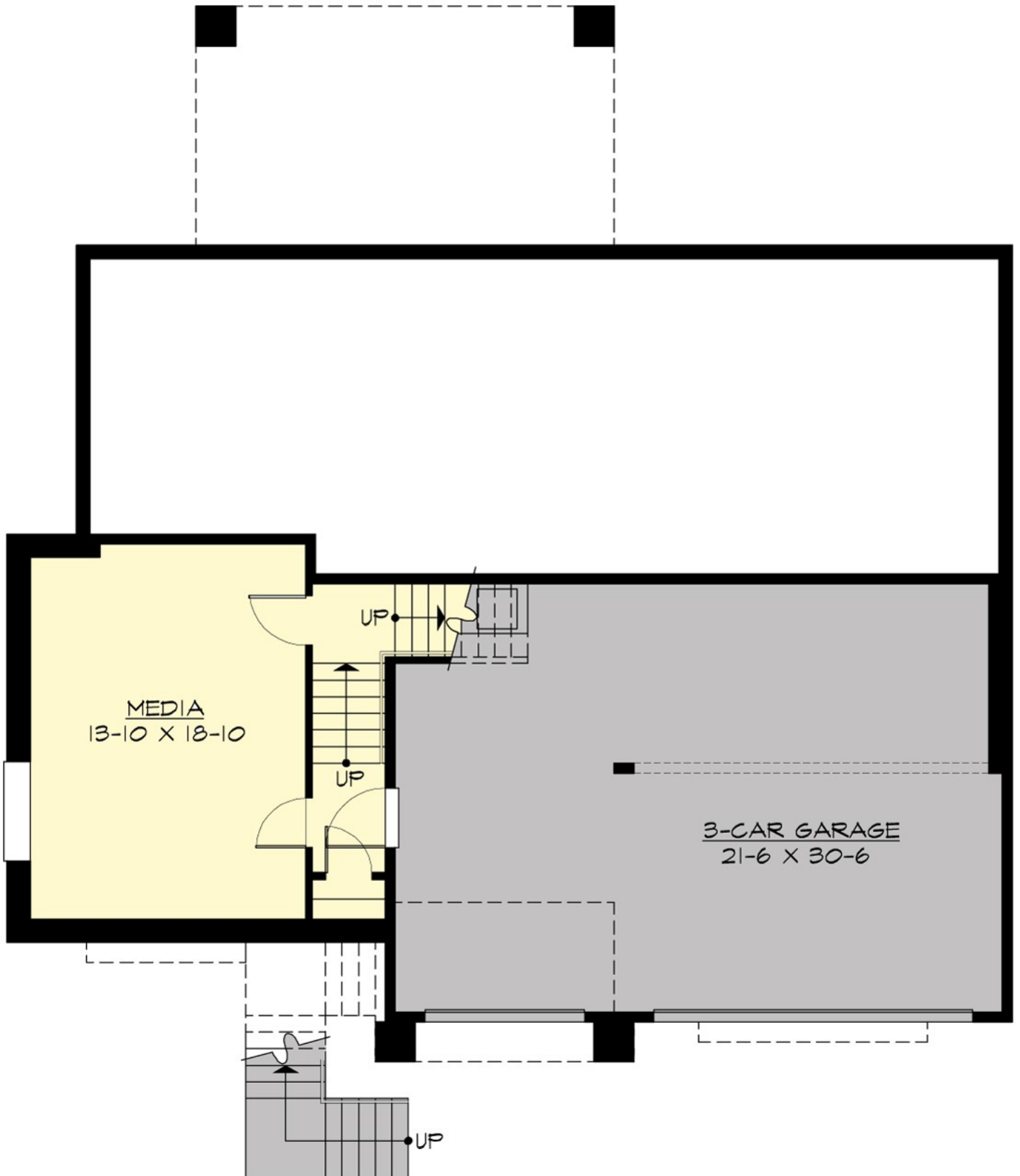
# MACINNESS - M3949A3FU-0DB

## UPPER FLOOR



# MACINNESS - M3949A3FU-0DB

## LOWER FLOOR



# MACINNESS - M3949A3FU-0DB

## PLAN DETAILS

### Area Summary

Total Area:	<b>3949 Sq. Ft.</b>
Main Floor:	<b>1794 Sq. Ft.</b>
Upper Floor:	<b>1774 Sq. Ft.</b>
Lower Floor:	<b>381 Sq. Ft.</b>
Garage Floor:	<b>700 Sq. Ft.</b>

### General Information

Stories:	<b>3</b>
Width:	<b>50`-6"</b>
Depth:	<b>51`-0"</b>
Height:	<b>26`-9"</b>

### Architectural Style

Craftsman  
Shingle  
Traditional

### Number of Rooms

Bedrooms:	<b>5</b>
Full Baths:	<b>4</b>
Half Baths:	<b>1</b>

### Garage

Garage Size:	<b>3</b>
Garage Door Location:	<b>Front</b>
Garage Type:	<b>Under</b>

### Roof Pitches

Primary:	<b>4:12</b>
Secondary:	<b>3:12</b>

### Wall Heights

Main:	<b>10-0"</b>
Upper:	<b>9-0"</b>
Lower:	<b>9-0"</b>

### Foundation Type

Daylight Basement

### Roof Framing

Combination

### Floor Load

Live (lbs):	<b>40 PSF</b>
Dead (lbs):	<b>10 PSF</b>

### Roof Load

Live (lbs):	<b>25 PSF</b>
Dead (lbs):	<b>15 PSF</b>
Wind:	<b>85 MPH</b>

### Design Features

- Bonus Space @ , Upper & Lower Floor
- Front and Rear Porch
- Great Room
- Laundry Room @ & Upper Floor
- Master Bedroom @ Upper Floor Rear
- Craftsman House Plans
- Shingle House Plans
- Traditional House Plans
- View Lot (Rear) Plans