

## **MACMANUS - M4043A3F-0FB**

Total Area: **6134 Sq. Ft.**  
Garage Area: **743 Sq. Ft.**  
Garage Size: **3**  
Stories: **3**  
Bedrooms : **6**  
Full Baths : **6**  
Half Baths : **1**  
Width : **67`-4"**  
Depth : **50`-6"**  
Height : **23`-6"**  
Foundation : **Basement**



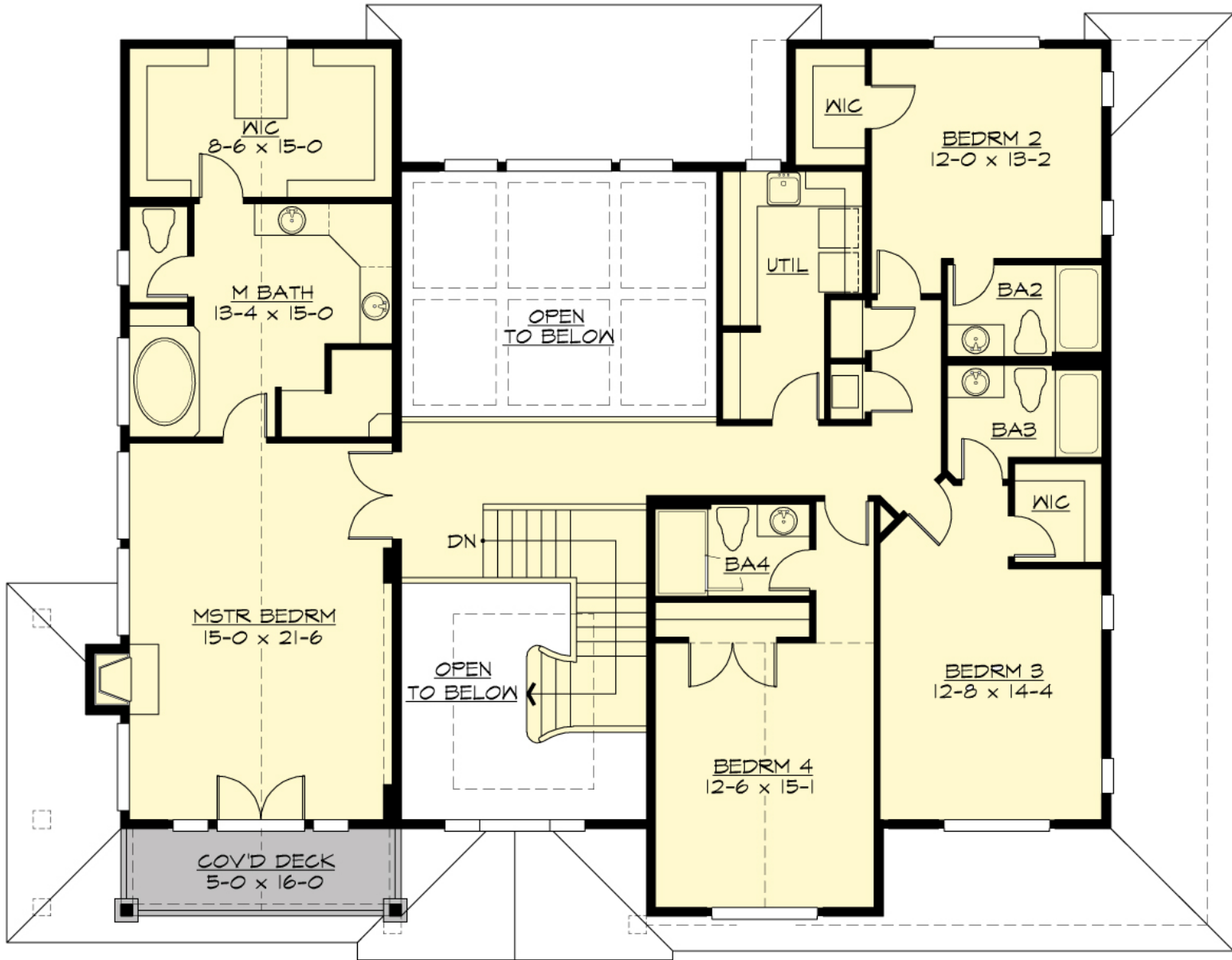
# MACMANUS - M4043A3F-0FB

## MAIN FLOOR



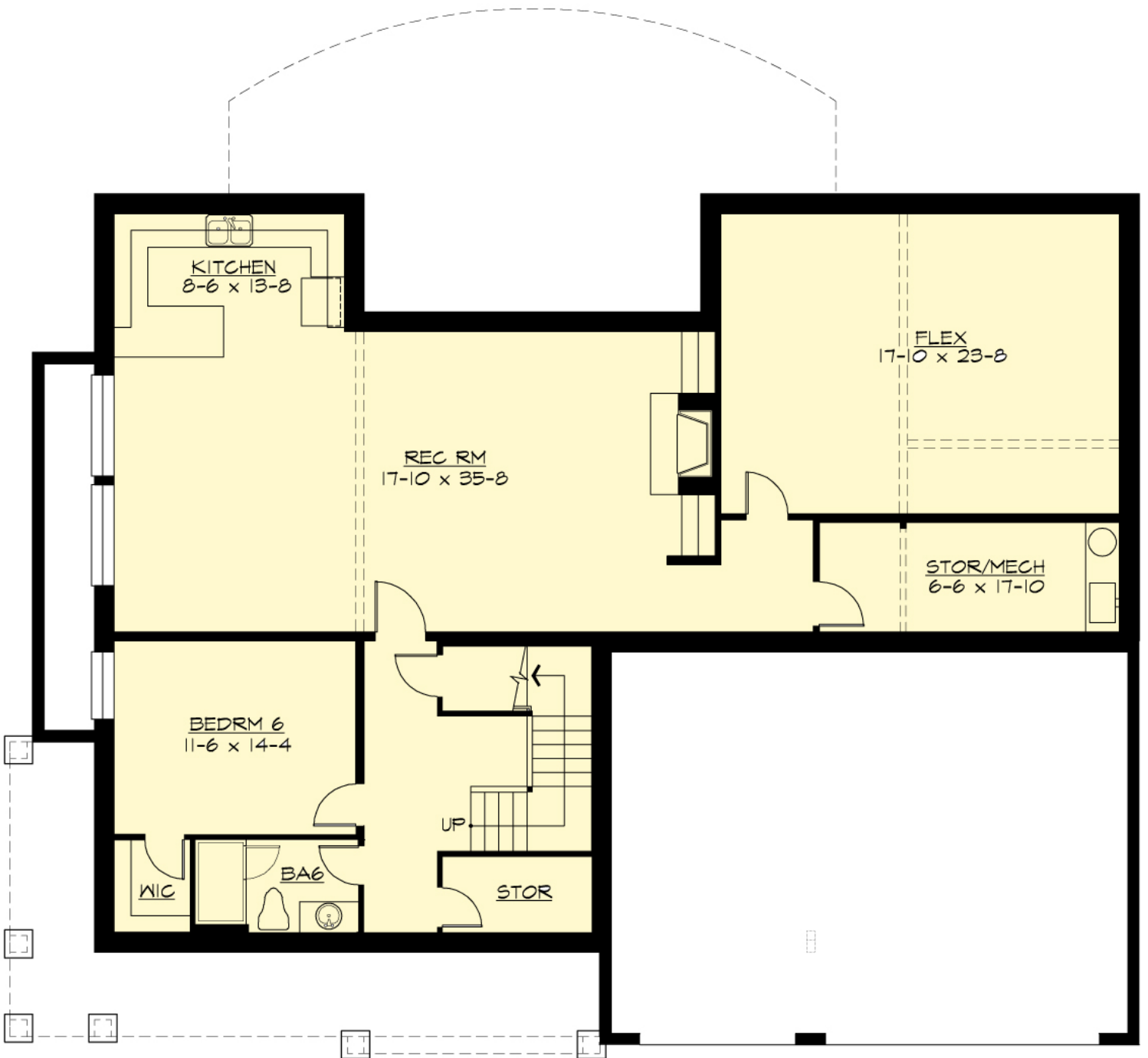
# MACMANUS - M4043A3F-0FB

## UPPER FLOOR



# MACMANUS - M4043A3F-0FB

## LOWER FLOOR



# MACMANUS - M4043A3F-0FB

## PLAN DETAILS

### Area Summary

Total Area:	<b>6134 Sq. Ft.</b>
Main Floor:	<b>2083 Sq. Ft.</b>
Upper Floor:	<b>1960 Sq. Ft.</b>
Lower Floor:	<b>2091 Sq. Ft.</b>
Garage Floor:	<b>743 Sq. Ft.</b>

### General Information

Stories:	<b>3</b>
Width:	<b>67`-4"</b>
Depth:	<b>50`-6"</b>
Height:	<b>23`-6"</b>

### Architectural Style

Craftsman  
Lodge  
Northwest

### Number of Rooms

Bedrooms:	<b>6</b>
Full Baths:	<b>6</b>
Half Baths:	<b>1</b>

### Garage

Garage Size:	<b>3</b>
Garage Door Location:	<b>Front</b>

### Roof Pitches

Primary:	<b>5:12</b>
Secondary:	<b>3:12</b>

### Wall Heights

Main:	<b>9-0"</b>
Upper:	<b>8-0"</b>
Lower:	<b>9-0"</b>

### Foundation Type

Cellar Basement

### Roof Framing

Trusses

### Floor Load

Live (lbs):	<b>40 PSF</b>
Dead (lbs):	<b>10 PSF</b>

### Roof Load

Live (lbs):	<b>25 PSF</b>
Dead (lbs):	<b>15 PSF</b>
Wind:	<b>85 MPH</b>

### Design Features

- Bonus Space @ & Lower Floor
- Front and Rear Porch
- Great Room
- Laundry Room @ Main & Upper Floor
- Master Bedroom @ Upper Floor Front
- Craftsman House Plans
- Lodge House Plans
- Northwest Floor Plans
- View Lot (Front) Plans
- Wide Lot House Plans