

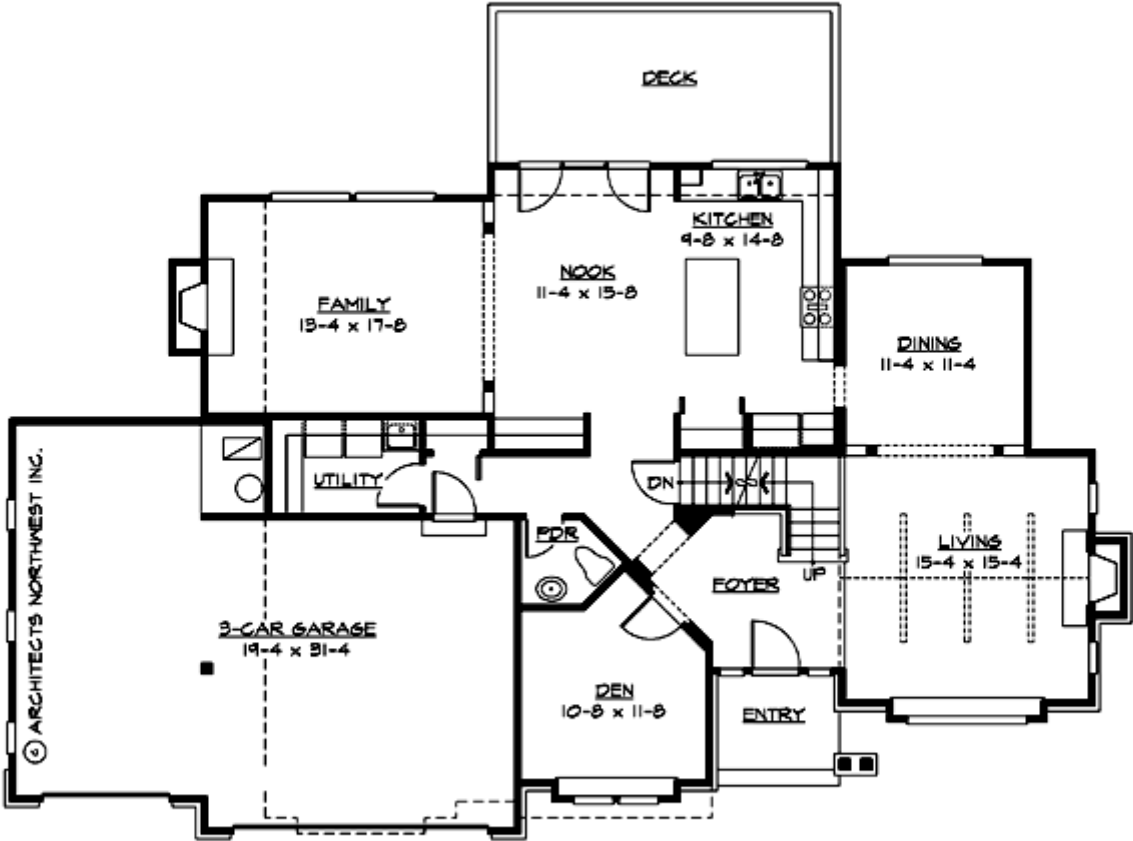
## MIDDLETON HEIGHTS - M2720A3F-0DB

Total Area: **4200 Sq. Ft.**  
Garage Area: **710 Sq. Ft.**  
Garage Size: **3**  
Stories: **3**  
Bedrooms : **4**  
Full Baths : **3**  
Half Baths : **1**  
Width : **70`-0"**  
Depth : **42`-0"**  
Height : **25`-0"**  
Foundation : **Basement**



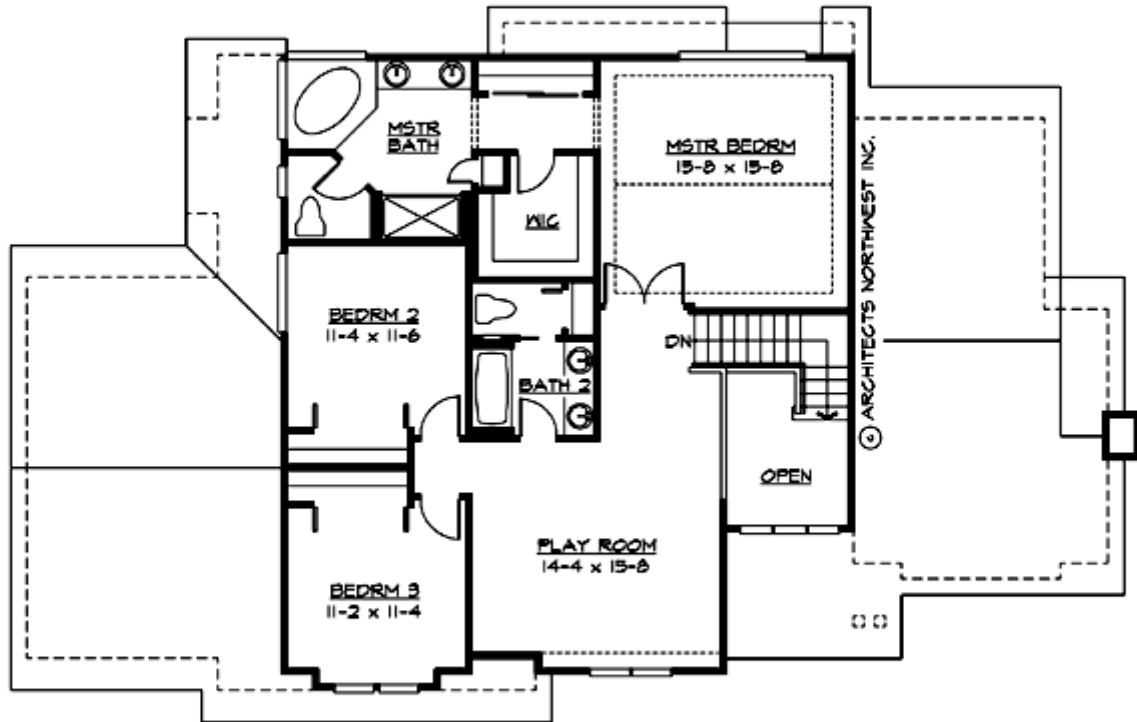
# MIDDLETON HEIGHTS - M2720A3F-0DB

## MAIN FLOOR



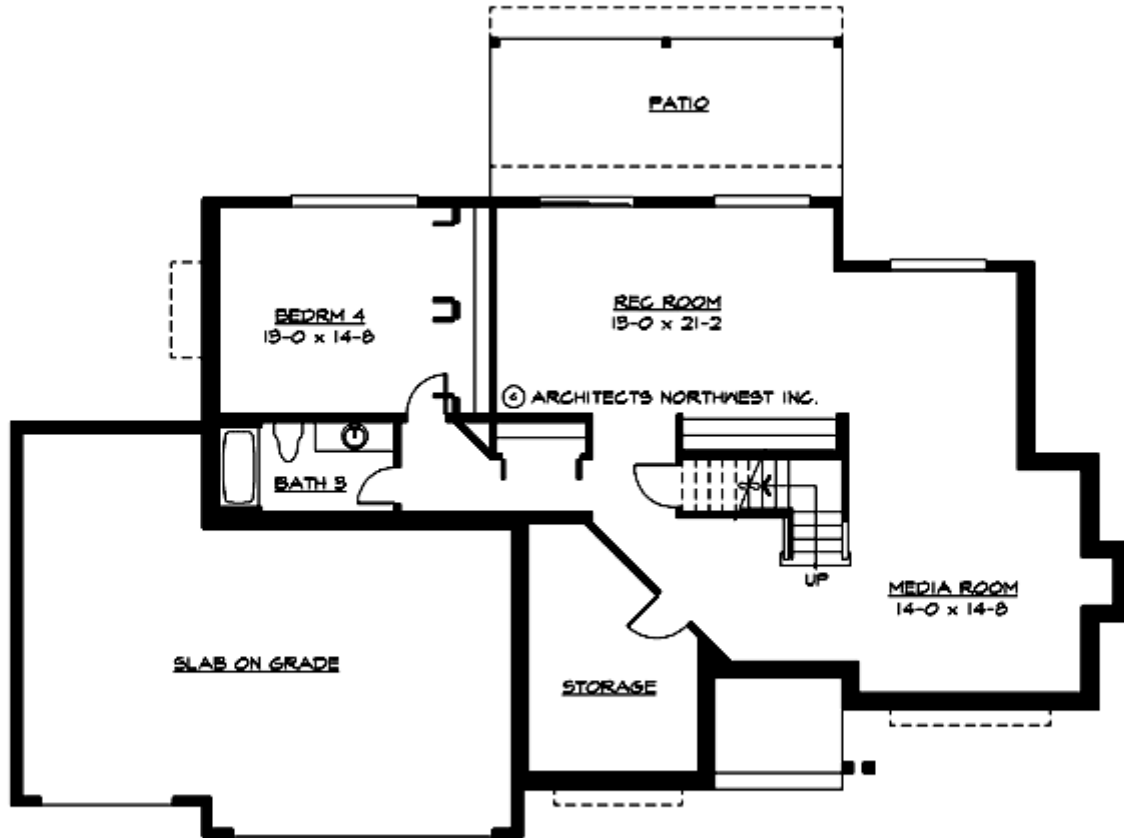
# MIDDLETON HEIGHTS - M2720A3F-0DB

## UPPER FLOOR



# MIDDLETON HEIGHTS - M2720A3F-0DB

## LOWER FLOOR



# MIDDLETON HEIGHTS - M2720A3F-0DB

## PLAN DETAILS

### Area Summary

Total Area:	<b>4200 Sq. Ft.</b>
Main Floor:	<b>1504 Sq. Ft.</b>
Upper Floor:	<b>1216 Sq. Ft.</b>
Lower Floor:	<b>1480 Sq. Ft.</b>
Garage Floor:	<b>710 Sq. Ft.</b>

### General Information

Stories:	<b>3</b>
Width:	<b>70`-0"</b>
Depth:	<b>42`-0"</b>
Height:	<b>25`-0"</b>

### Architectural Style

Craftsman  
Northwest  
Traditional

### Number of Rooms

Bedrooms:	<b>4</b>
Full Baths:	<b>3</b>
Half Baths:	<b>1</b>

### Garage

Garage Size:	<b>3</b>
Garage Door Location:	<b>Front</b>

### Roof Pitches

Primary:	<b>6:12</b>
----------	-------------

### Wall Heights

Main:	<b>8-0"</b>
Upper:	<b>8-0"</b>
Lower:	<b>8-0"</b>

### Foundation Type

Daylight Basement

### Roof Framing

Trusses

### Floor Load

Live (lbs):	<b>40 PSF</b>
Dead (lbs):	<b>10 PSF</b>

### Roof Load

Live (lbs):	<b>25 PSF</b>
Dead (lbs):	<b>15 PSF</b>
Wind:	<b>85 MPH</b>

### Design Features

- Bonus Space @ , Upper & Lower Floor
- Den/Office
- Great Room
- Laundry Room @ Main Floor
- Master Bedroom @ Upper Floor Rear
- Craftsman House Plans
- Northwest Floor Plans
- Traditional House Plans
- Wide Lot House Plans