

## TRIPLE CREEK - M3760A4ST-0PB

Total Area: **4802 Sq. Ft.**

Garage Area: **0 Sq. Ft.**

Garage Size: **4**

Stories: **3**

Bedrooms : **5**

Full Baths : **5**

Half Baths : **1**

Width : **76`-0"**

Depth : **101`-6"**

Height : **27`-0"**

Foundation : **Basement**



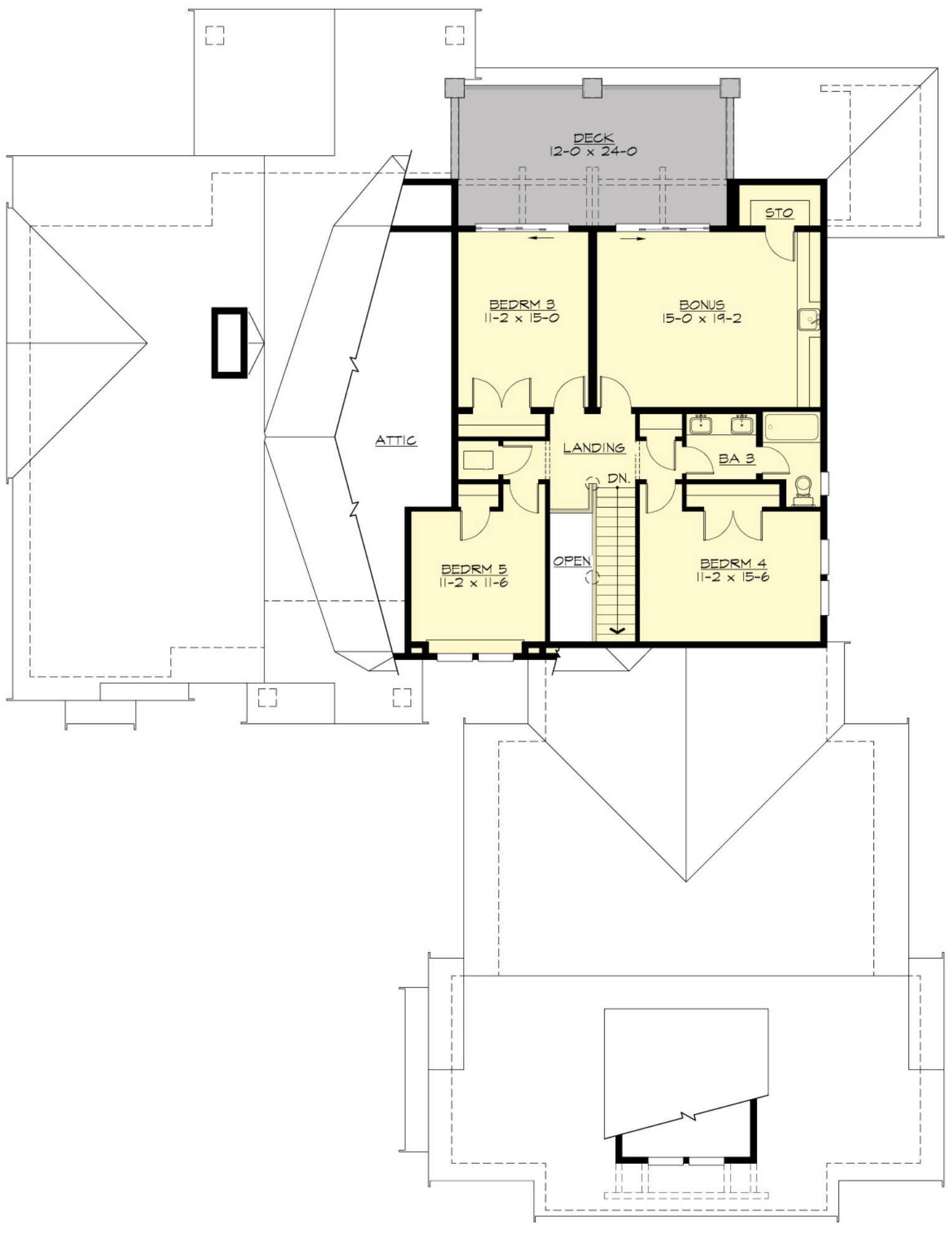
# TRIPLE CREEK - M3760A4ST-0PB

## MAIN FLOOR



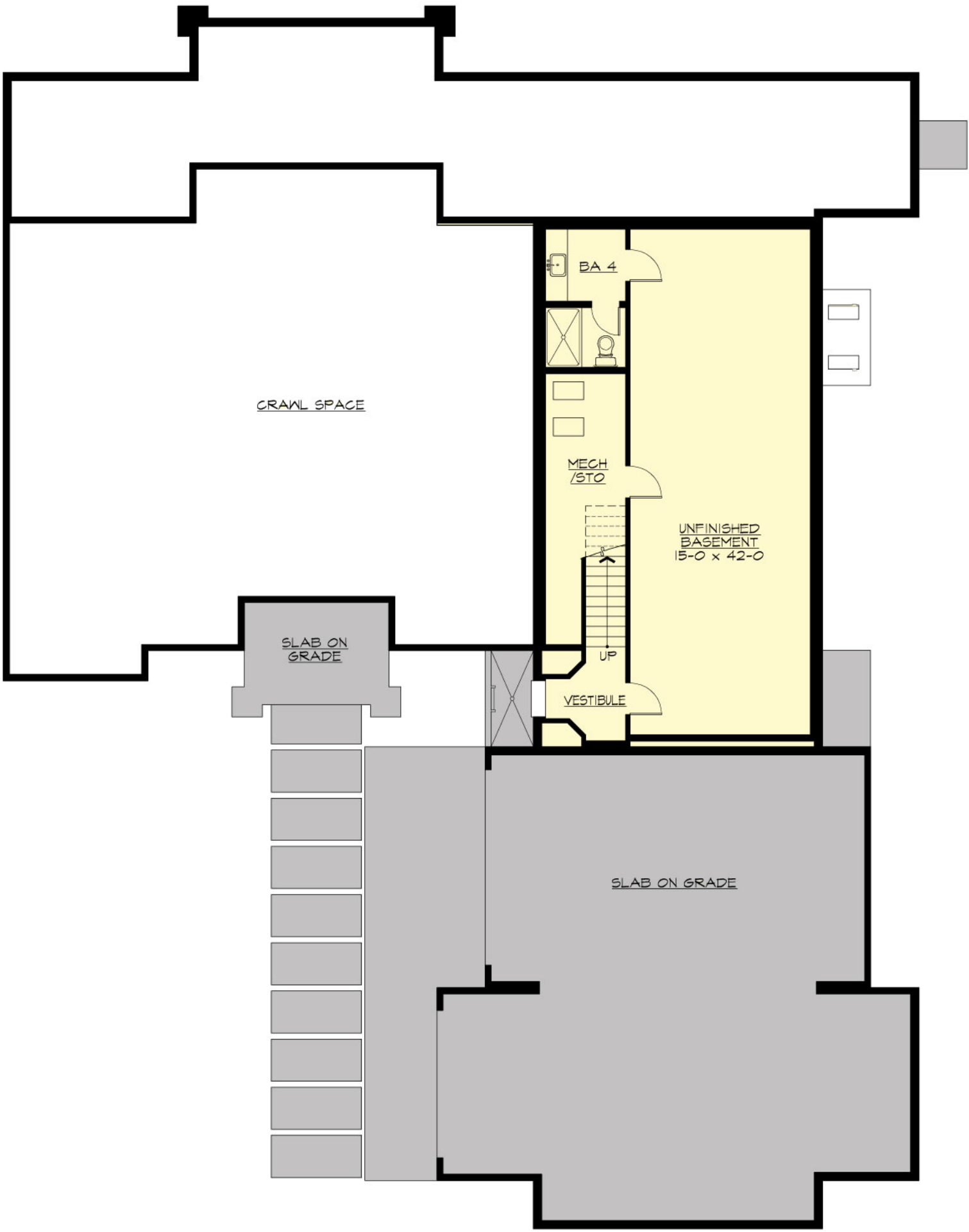
# TRIPLE CREEK - M3760A4ST-0PB

## UPPER FLOOR



# TRIPLE CREEK - M3760A4ST-0PB

## LOWER FLOOR



# TRIPLE CREEK - M3760A4ST-0PB

## PLAN DETAILS

### Area Summary

Total Area:	<b>4802 Sq. Ft.</b>
Main Floor:	<b>2646 Sq. Ft.</b>
Upper Floor:	<b>1116 Sq. Ft.</b>
Lower Floor:	<b>1040 Sq. Ft.</b>

### General Information

Stories:	<b>3</b>
Width:	<b>76`-0"</b>
Depth:	<b>101`-6"</b>
Height:	<b>27`-0"</b>

### Architectural Style

Craftsman  
Lodge  
Mountain

### Number of Rooms

Bedrooms:	<b>5</b>
Full Baths:	<b>5</b>
Half Baths:	<b>1</b>

### Garage

Garage Size:	<b>4</b>
Garage Door Location:	<b>Side</b>
Garage Type:	<b>Tandem</b>

### Roof Pitches

Primary:	<b>9:12</b>
Secondary:	<b>3:12</b>

### Wall Heights

Main:	<b>10-0"</b>
Upper:	<b>9-0"</b>
Lower:	<b>8-0"</b>

### Foundation Type

Cellar Basement

### Roof Framing

Trusses

### Floor Load

Live (lbs):	<b>40 PSF</b>
Dead (lbs):	<b>10 PSF</b>

### Roof Load

Live (lbs):	<b>25 PSF</b>
Dead (lbs):	<b>15 PSF</b>
Wind:	<b>85 MPH</b>

### Design Features

- New Plans
- Bonus Space @ , Upper & Lower Floor
- Den/Office
- Rear Porch
- Great Room
- Laundry Room @ Main Floor
- Master Bedroom @ Main Floor Rear
- Craftsman House Plans
- Lodge House Plans
- Mountain House Plans
- View Lot (Rear) Plans