

**ARCHITECTS  
NORTHWEST**

Your Family Architect



For Questions and Ordering

**Call: 1-888-272-4100**

E-mail: [Info@ArchitectsNW.com](mailto:Info@ArchitectsNW.com)

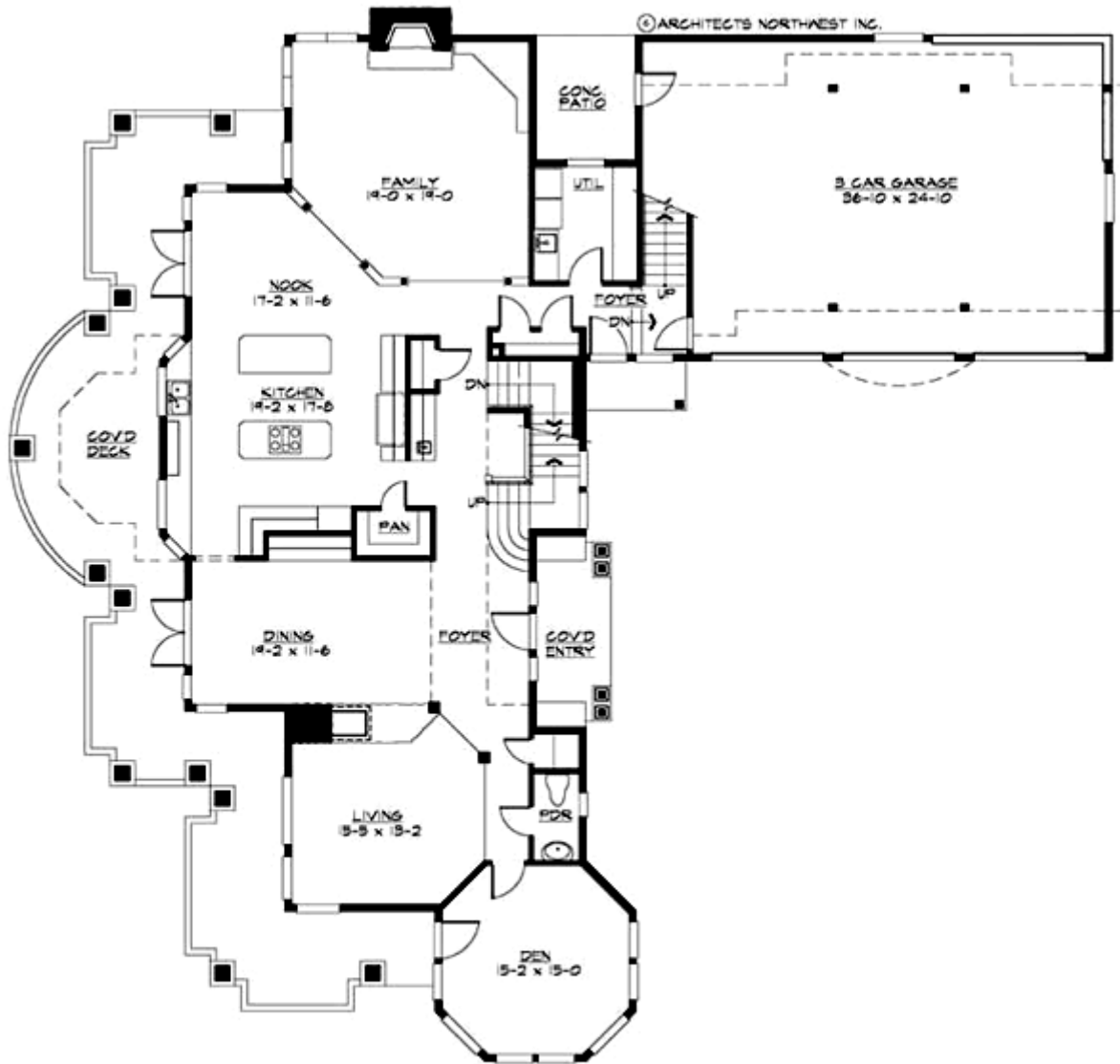
## **WESTHAMPTON BLUFF - M6540A3S-0DB**

Total Area: **6539 Sq. Ft.**  
Garage Area: **956 Sq. Ft.**  
Garage Size: **3**  
Stories: **3**  
Bedrooms : **5**  
Full Baths : **4**  
Half Baths : **1**  
Width : **84`-0"**  
Depth : **88`-0"**  
Height : **28`-6"**  
Foundation : **Basement**



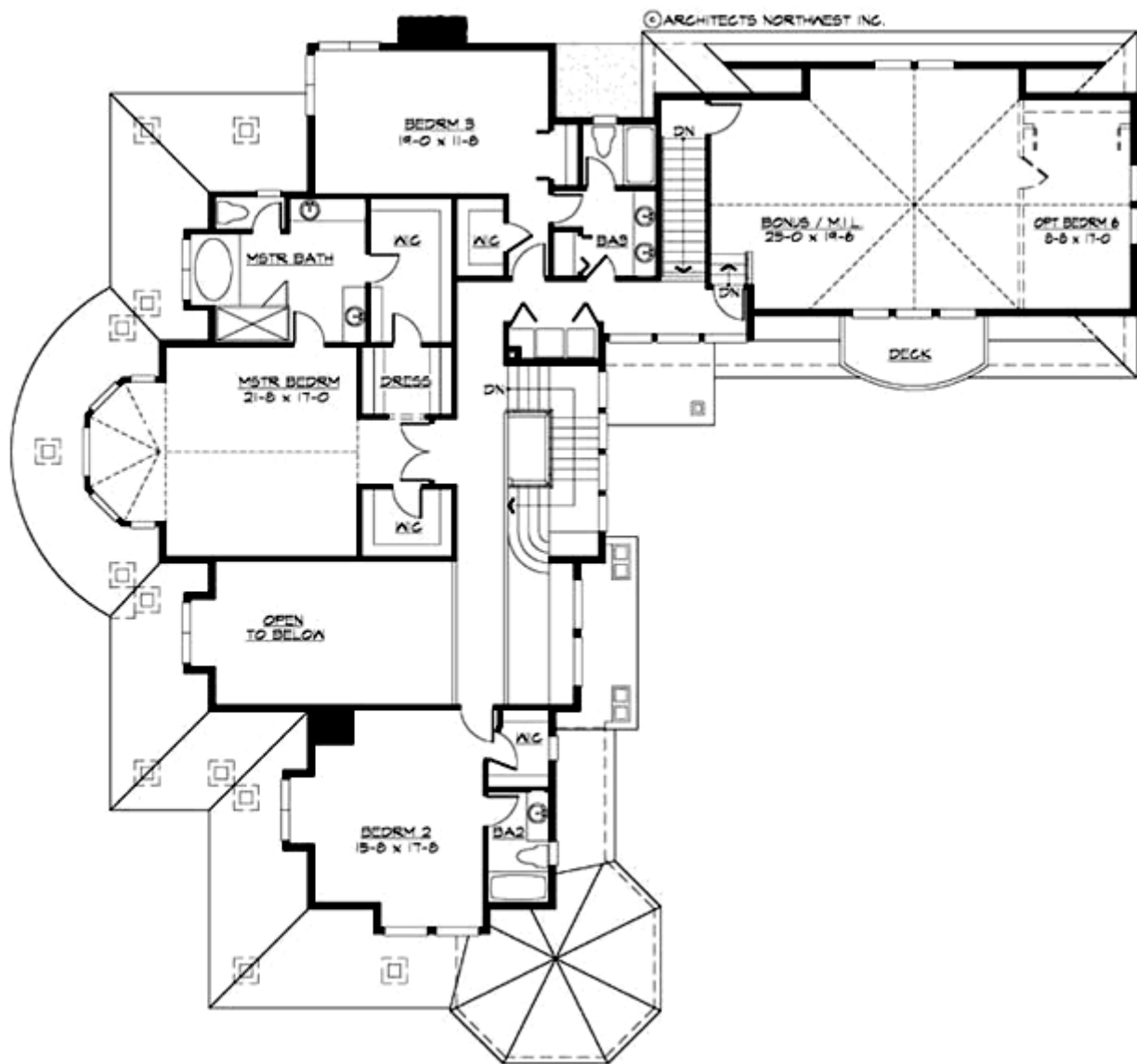
# WESTHAMPTON BLUFF - M6540A3S-0DB

## MAIN FLOOR



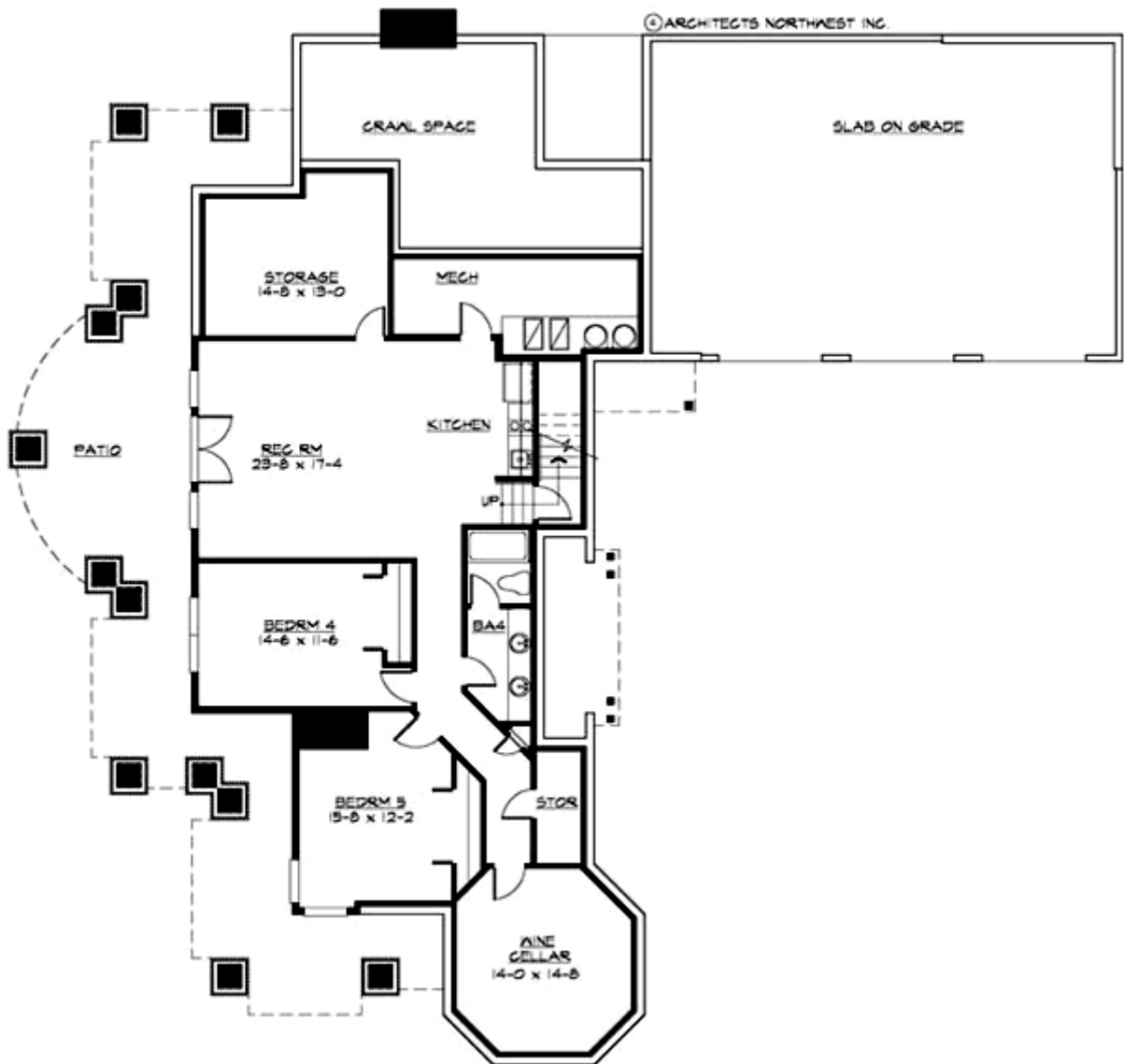
# WESTHAMPTON BLUFF - M6540A3S-0DB

## UPPER FLOOR



# WESTHAMPTON BLUFF - M6540A3S-0DB

## LOWER FLOOR



# WESTHAMPTON BLUFF - M6540A3S-0DB

## PLAN DETAILS

### Area Summary

Total Area:	<b>6539 Sq. Ft.</b>
Main Floor:	<b>2227 Sq. Ft.</b>
Upper Floor:	<b>2493 Sq. Ft.</b>
Lower Floor:	<b>1820 Sq. Ft.</b>
Garage Floor:	<b>956 Sq. Ft.</b>

### General Information

Stories:	<b>3</b>
Width:	<b>84`-0"</b>
Depth:	<b>88`-0"</b>
Height:	<b>28`-6"</b>

### Architectural Style

Craftsman  
Hampton  
Shingle

### Number of Rooms

Bedrooms:	<b>5</b>
Full Baths:	<b>4</b>
Half Baths:	<b>1</b>

### Garage

Garage Size:	<b>3</b>
Garage Door Location:	<b>Side</b>

### Roof Pitches

Primary:	<b>8:12</b>
Secondary:	<b>12:12</b>

### Wall Heights

Main:	<b>10-0"</b>
Upper:	<b>8-0"</b>
Lower:	<b>9-0"</b>

### Foundation Type

Daylight Basement

### Roof Framing

Stick

### Floor Load

Live (lbs):	<b>40 PSF</b>
Dead (lbs):	<b>10 PSF</b>

### Roof Load

Live (lbs):	<b>25 PSF</b>
Dead (lbs):	<b>15 PSF</b>
Wind:	<b>85 MPH</b>

### Design Features

- Bonus Space @ , Upper & Lower Floor
- Den/Office
- Rear Porch
- Great Room
- Laundry Room @ Main & Upper Floor
- Master Bedroom @ Upper Floor Rear
- Craftsman House Plans
- Hampton House Plans
- Shingle House Plans