

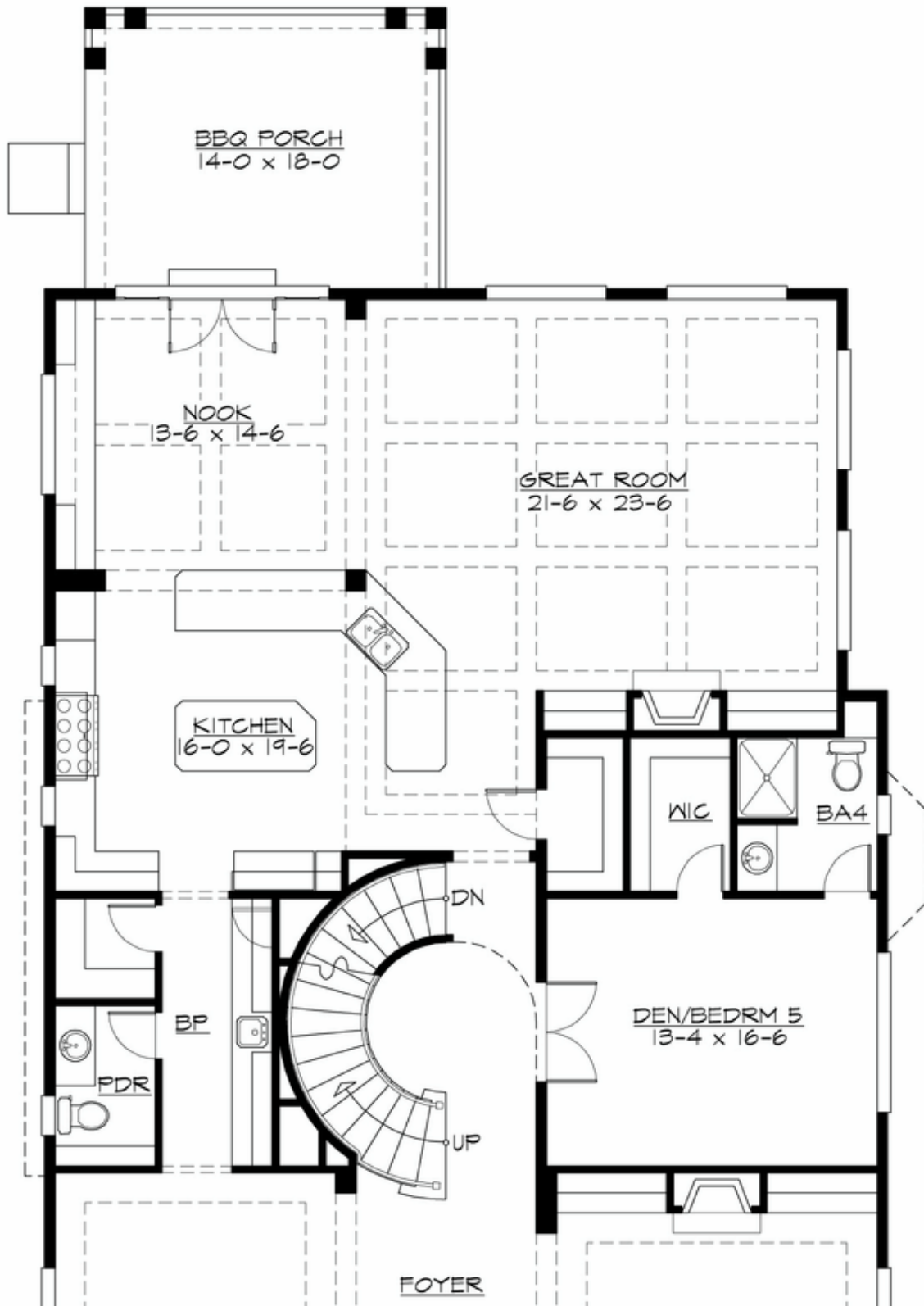
## JADEMERE - PLAN M5699A3S-0DB

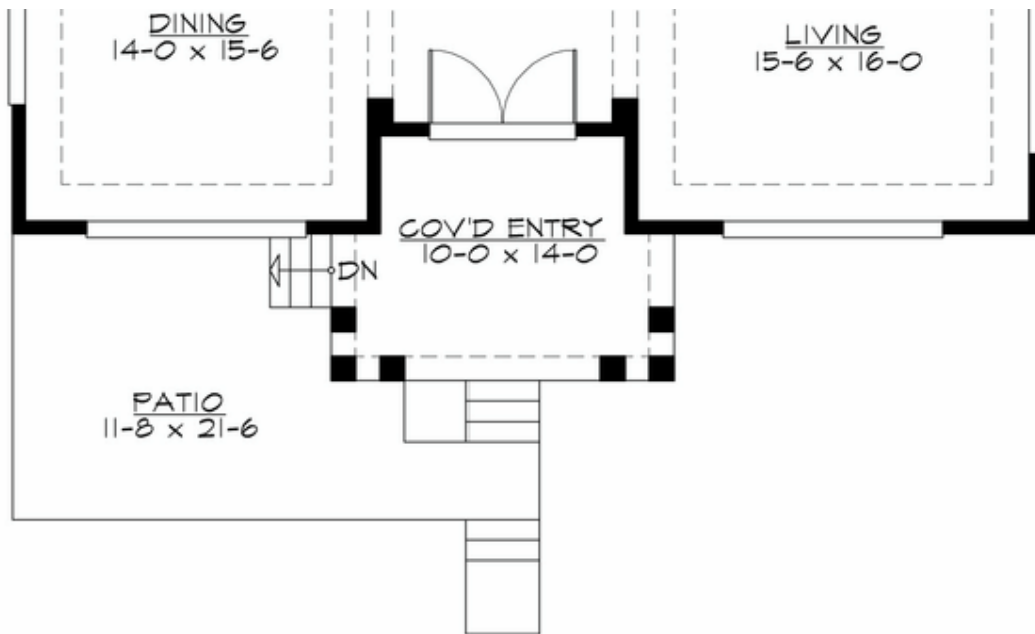
Total Area: 5778 sq. ft.  
Garage Area: 768 sq. ft.  
Garage Area: 768 sq. ft.  
Garage Size: 3  
Stories: 3  
Bedrooms: 4  
Full Baths: 5  
Half Baths: 1  
Width: 42'-0"  
Depth: 80'-0"  
Height: 28'-0"  
Foundation: Daylight Basement



**JADEMERE - PLAN M5699A3S-0DB**

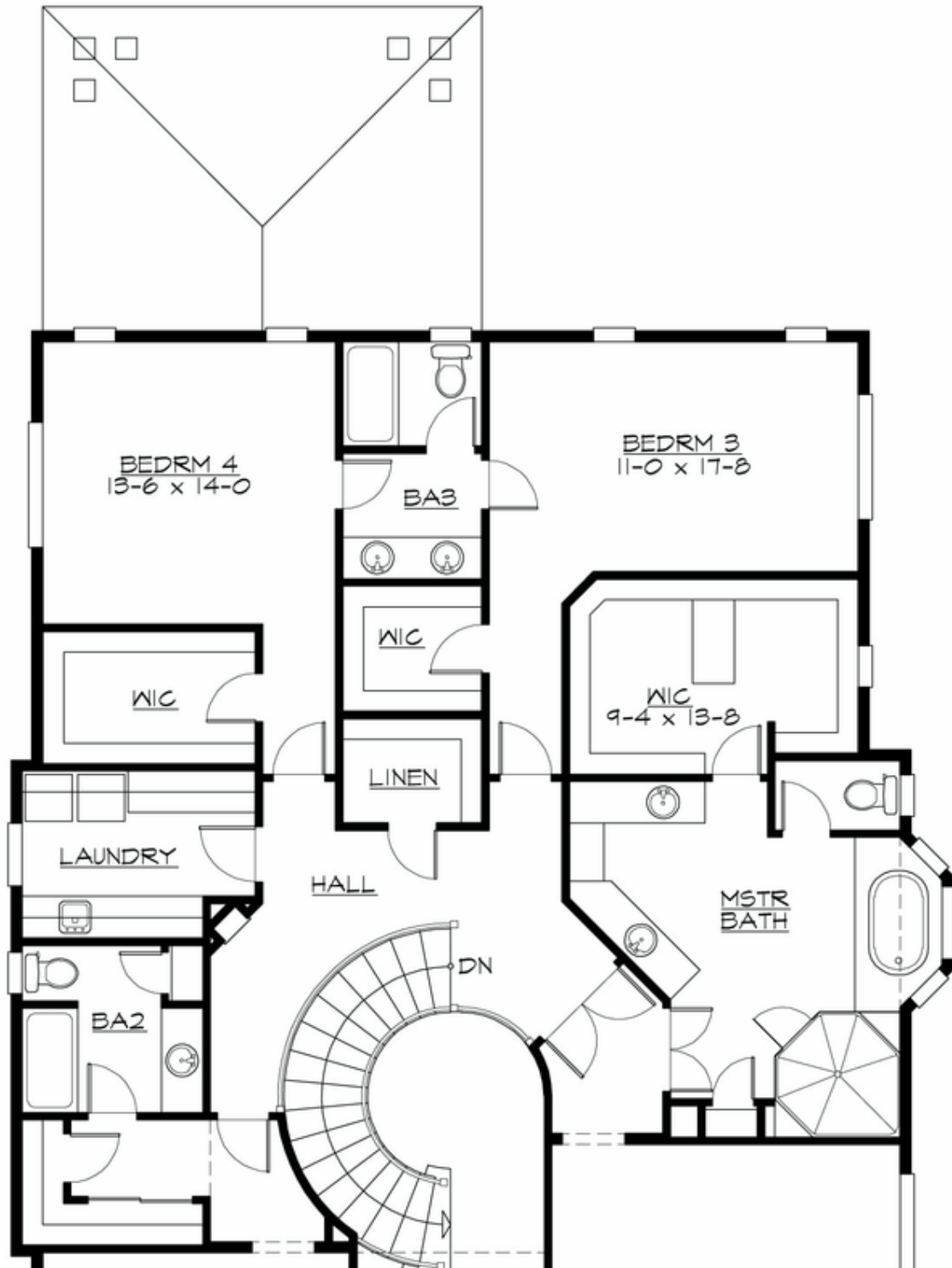
**MAIN FLOOR**

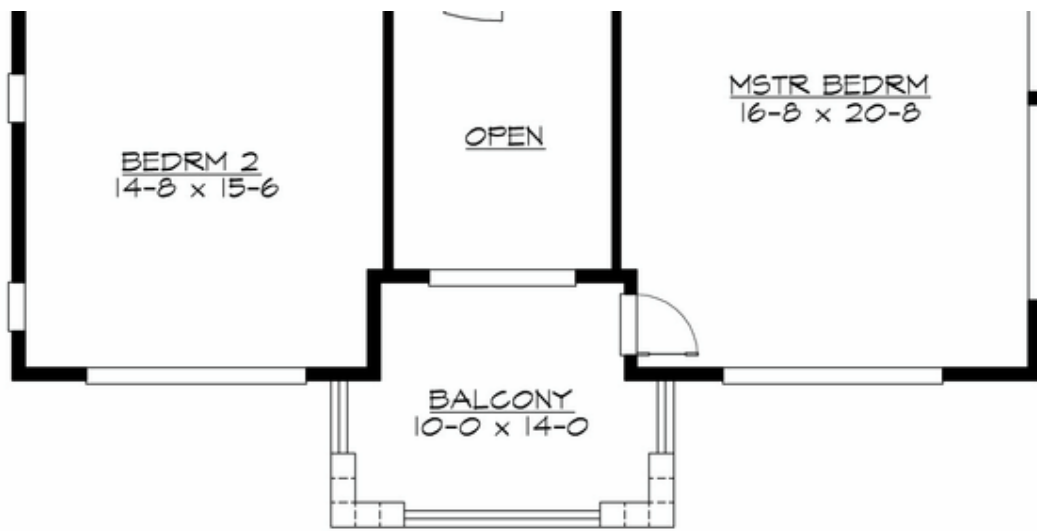




**JADEMERE - PLAN M5699A3S-0DB**

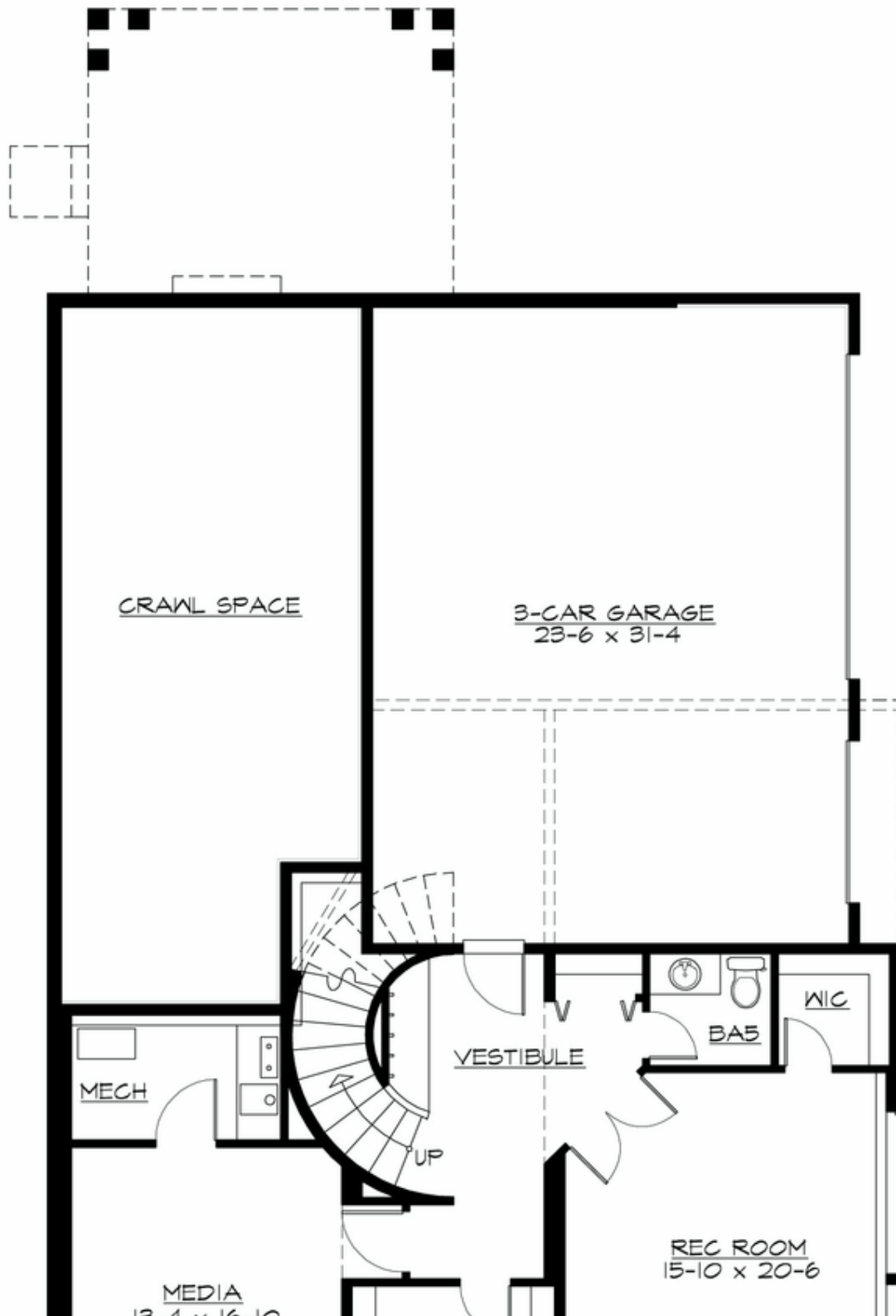
**UPPER FLOOR**



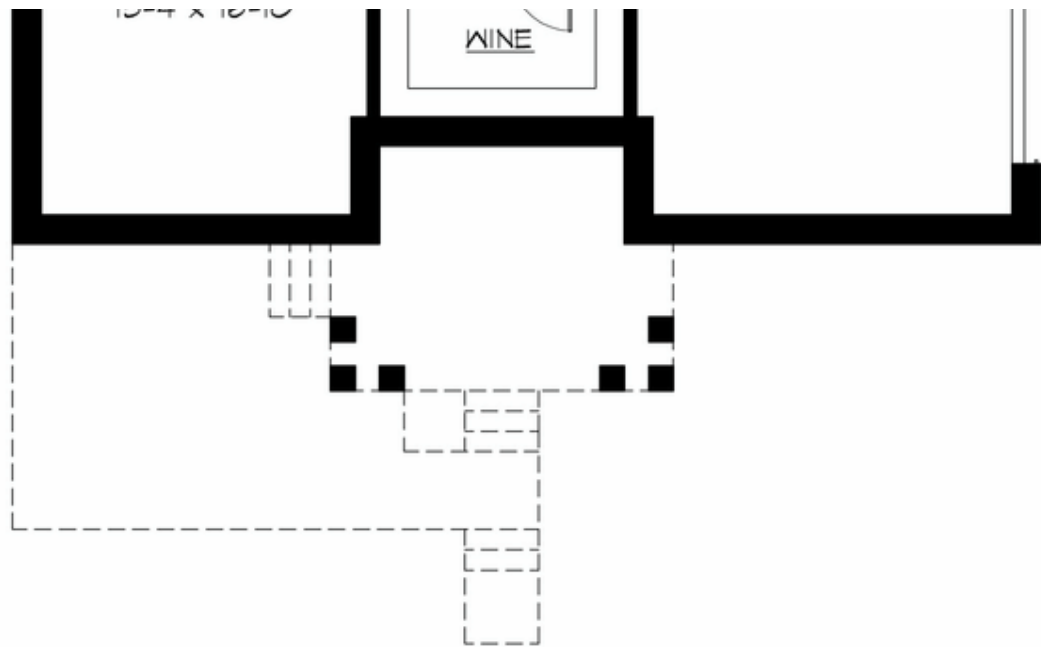


**JADEMERE - PLAN M5699A3S-0DB**

**LOWER FLOOR**



**COPYRIGHT NOTICE:** It is illegal to build this plan without a legally obtained set of prints. It is illegal to copy or redraw these plans. Violation of U.S. Copyright Laws are punishable with fines up to \$150,000.





## JADEMERE - PLAN M5699A3S-0DB

### PLAN DETAILS

#### Area Summary

Total Area:	5778 sq. ft.
Main Floor:	2440 sq. ft.
Upper Floor:	2219 sq. ft.
Lower Floor:	1119 sq. ft.
Garage Floor:	768 sq. ft.

#### General Information

Stories:	3
Width:	42'-0"
Depth:	80'-0"
Height:	28'-0"

#### Architectural Style

#### Number of Rooms

Bedrooms:	4
Full Baths:	5
Half Baths:	1

#### Garage

Garage Size:	3
Garage Door Location:	Side

#### Roof Pitches

Primary:	4:12
----------	------

#### Wall Heights

Main:	10'-0"
Upper:	9'-0"
3rd Floor:	0'-0"
Lower:	9'-0"

#### Foundation Type

Daylight Basement

#### Roof Framing

Trusses

#### Floor Load

Live (lbs):	40 PSF
Dead (lbs):	10 PSF

#### Roof Load

Live (lbs):	25 PSF
Dead (lbs):	15 PSF
Wind:	85 MPH

#### Design Features

- Bonus Space @ Lower Floor
- Den/Office
- Front and Rear Porch
- Great Room
- Laundry Room @ Upper Floor
- Master Bedroom @ Upper Floor Front