

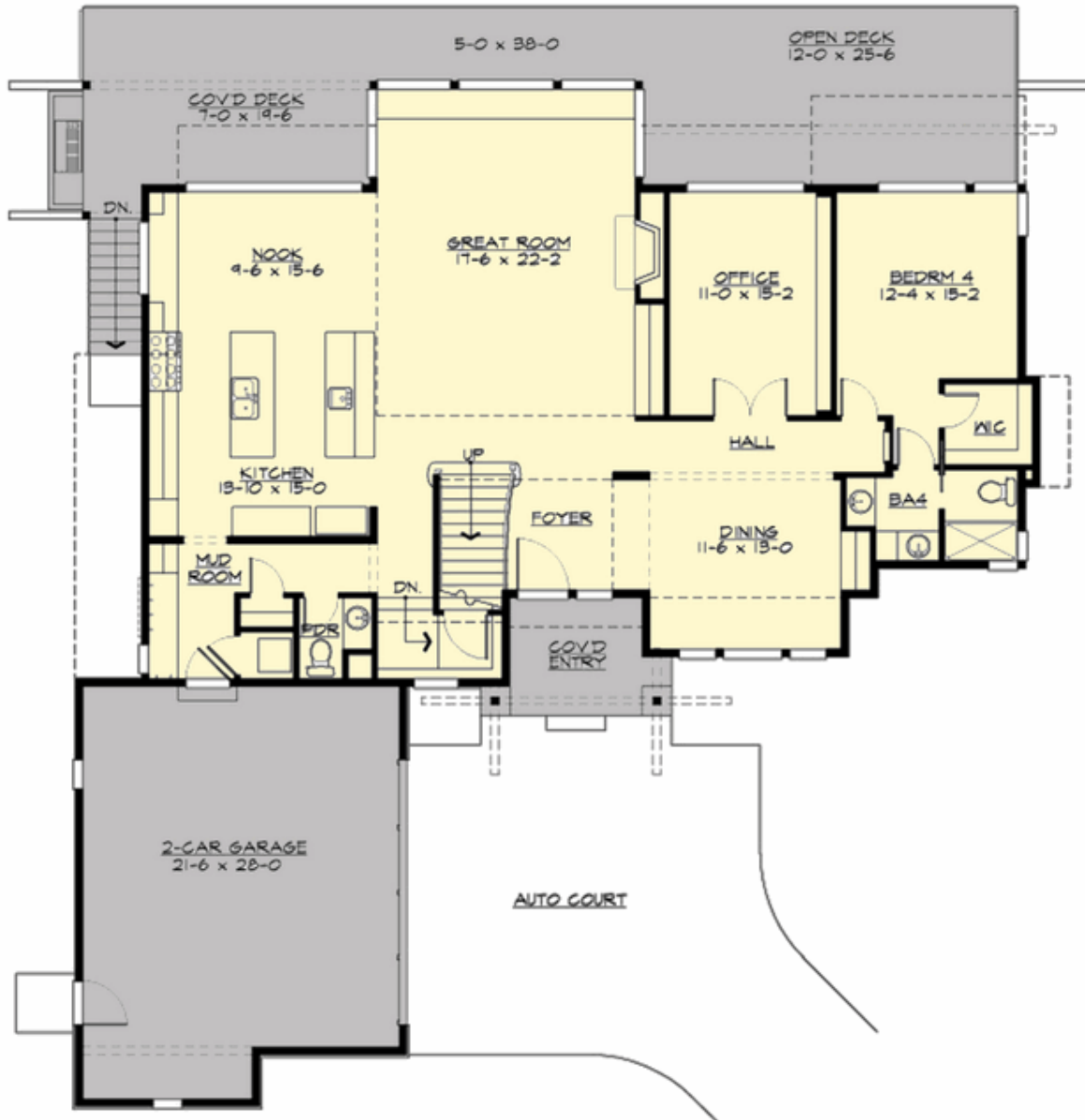
## ABELLA - PLAN M4828A2S2RU-0DB

Total Area: 4828 sq. ft.  
Garage Area: 1368 sq. ft.  
Garage Area: 1368 sq. ft.  
Garage Size: 4  
Stories: 3  
Bedrooms: 5  
Full Baths: 5  
Half Baths: 1  
Width: 64'-0"  
Depth: 74'-6"  
Height: 24'-0"  
Foundation: Daylight Basement



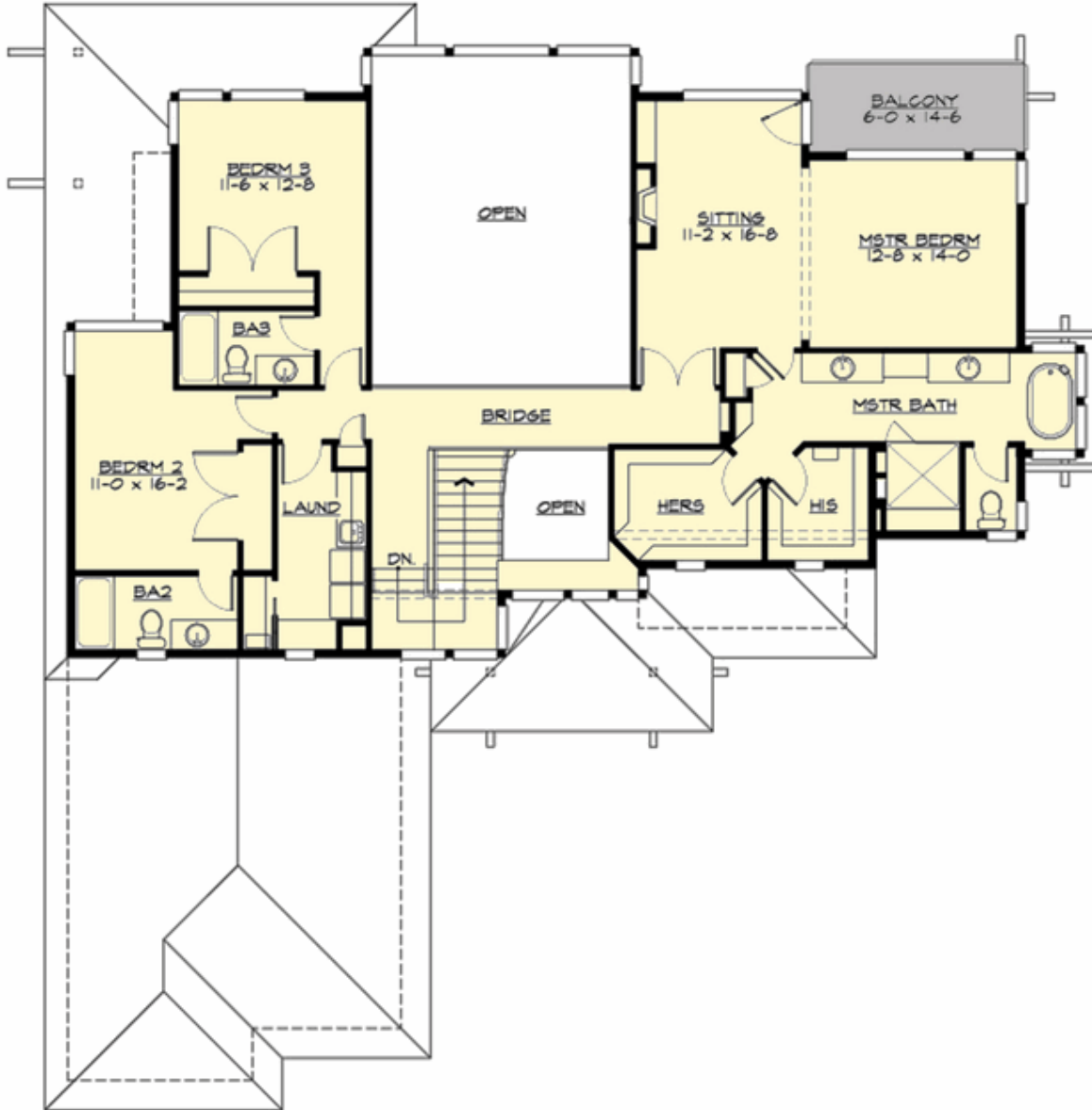
## ABELLA - PLAN M4828A2S2RU-0DB

### MAIN FLOOR



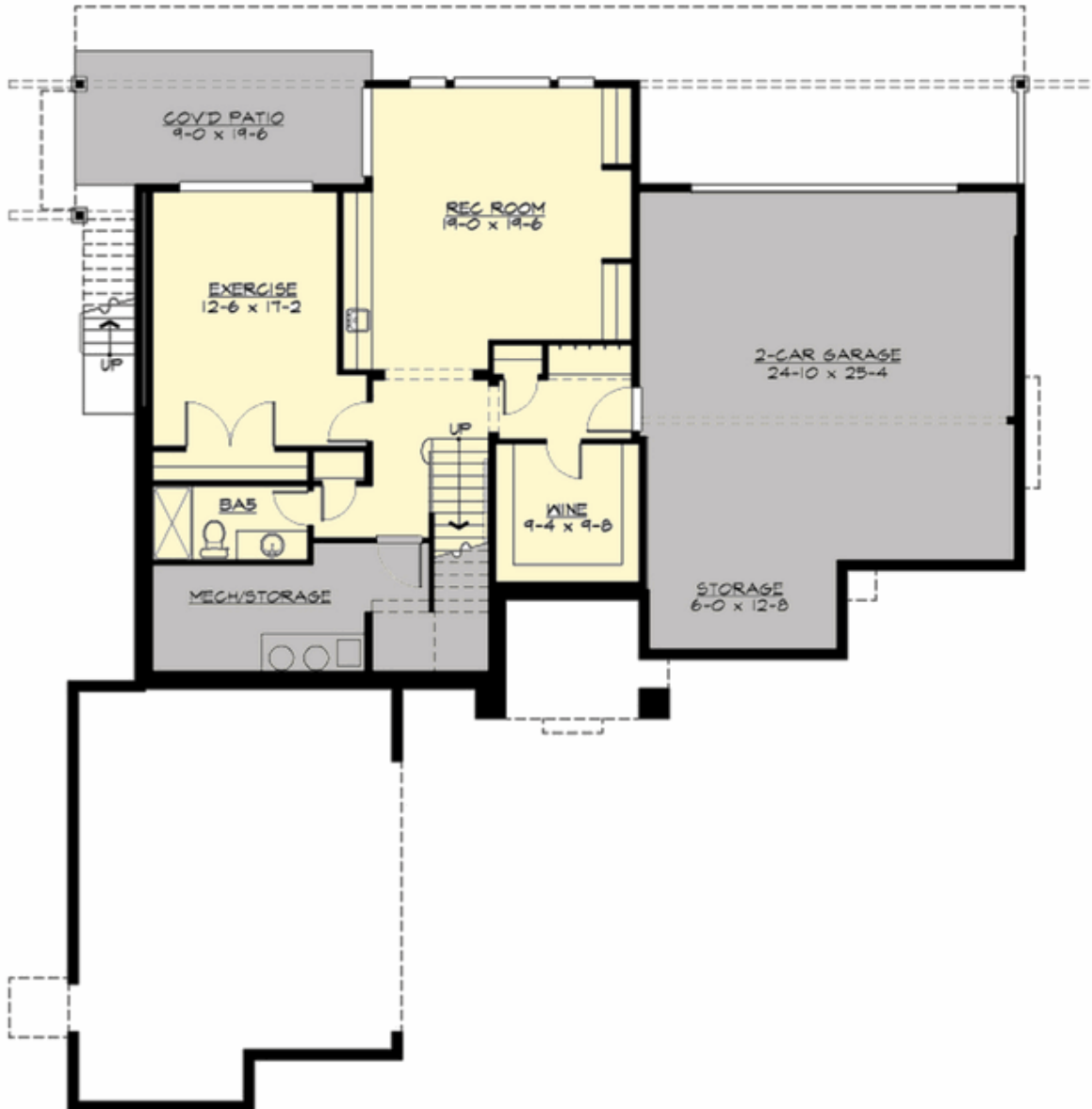
**ABELLA - PLAN M4828A2S2RU-0DB**

**UPPER FLOOR**



## ABELLA - PLAN M4828A2S2RU-0DB

### LOWER FLOOR



## ABELLA - PLAN M4828A2S2RU-0DB

### PLAN DETAILS

#### Area Summary

Total Area:	4828 sq. ft.
Main Floor:	2004 sq. ft.
Upper Floor:	1593 sq. ft.
Lower Floor:	1231 sq. ft.
Garage Floor:	1368 sq. ft.

#### General Information

Stories:	3
Width:	64'-0"
Depth:	74'-6"
Height:	24'-0"

#### Architectural Style

Contemporary  
Modern  
Prairie

#### Number of Rooms

Bedrooms:	5
Full Baths:	5
Half Baths:	1

#### Garage

Garage Size:	4
Garage Door Location:	Side
Garage Type:	Under

#### Roof Pitches

Primary:	3:12
----------	------

#### Wall Heights

Main:	10'-0"
Upper:	9'-0"
Lower:	10'-0"

#### Foundation Type

Daylight Basement

#### Roof Framing

Trusses

#### Floor Load

Live (lbs):	40 PSF
Dead (lbs):	10 PSF

#### Roof Load

Live (lbs):	25 PSF
Dead (lbs):	15 PSF
Wind:	85 MPH

#### Design Features

- Bonus Space @ Lower Floor
- Den/Office
- Front and Rear Porch
- Great Room
- Laundry Room @ Upper Floor
- Luxury Plan
- Master Bedroom @ Upper Floor Rear
- View Lot - Rear