

## MANSVILLE GROVE - PLAN R5340A4FAT-1

Total Area: 5428 sq. ft.  
Garage Area: 1807 sq. ft.  
Garage Area: 1807 sq. ft.  
Garage Size: 4  
Stories: 2  
Bedrooms: 3  
Full Baths: 4  
Half Baths: 1  
Width: 130'-0"  
Depth: 109'-6"  
Height: 27'-6"  
Foundation: Crawl Space



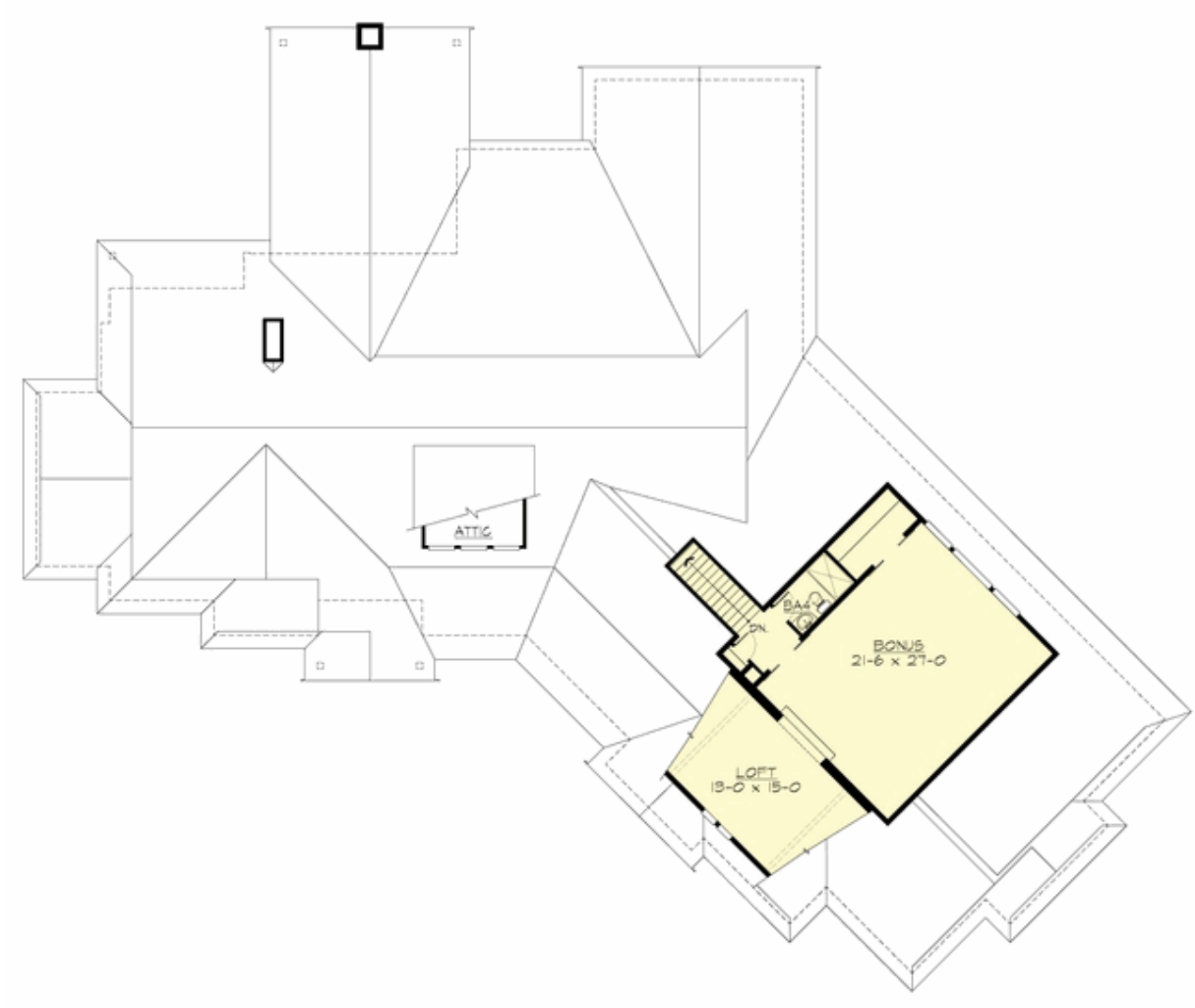
# MANSVILLE GROVE - PLAN R5340A4FAT-1

## MAIN FLOOR



**MANSVILLE GROVE - PLAN R5340A4FAT-1**

**UPPER FLOOR**





## MANSVILLE GROVE - PLAN R5340A4FAT-1

### PLAN DETAILS

#### Area Summary

Total Area: 5428 sq. ft.  
Main Floor: 4423 sq. ft.  
Upper Floor: 1005 sq. ft.  
Garage Floor: 1807 sq. ft.

#### General Information

Stories: 2  
Width: 130'-0"  
Depth: 109'-6"  
Height: 27'-6"

#### Architectural Style

Craftsman  
Shingle  
Traditional

#### Number of Rooms

Bedrooms: 3  
Full Baths: 4  
Half Baths: 1

#### Garage

Garage Size: 4  
Garage Door Location: Front  
Garage Type: Angled

#### Roof Pitches

Primary: 10:12  
Secondary: 5:12

#### Wall Heights

Main: 10'-0"  
Upper: 9'-0"

#### Foundation Type

Crawl Space

#### Roof Framing

Combination

#### Floor Load

Live (lbs): 40 PSF  
Dead (lbs): 10 PSF

#### Roof Load

Live (lbs): 25 PSF  
Dead (lbs): 15 PSF  
Wind: 85 MPH

#### Design Features

- Bonus Space @ Main Floor & Upper Floor
- Den/Office
- Great Room
- Laundry Room @ Main Floor
- Master Bedroom @ Main Floor Rear
- Rear Porch
- View Lot - Rear
- Wide Lot