

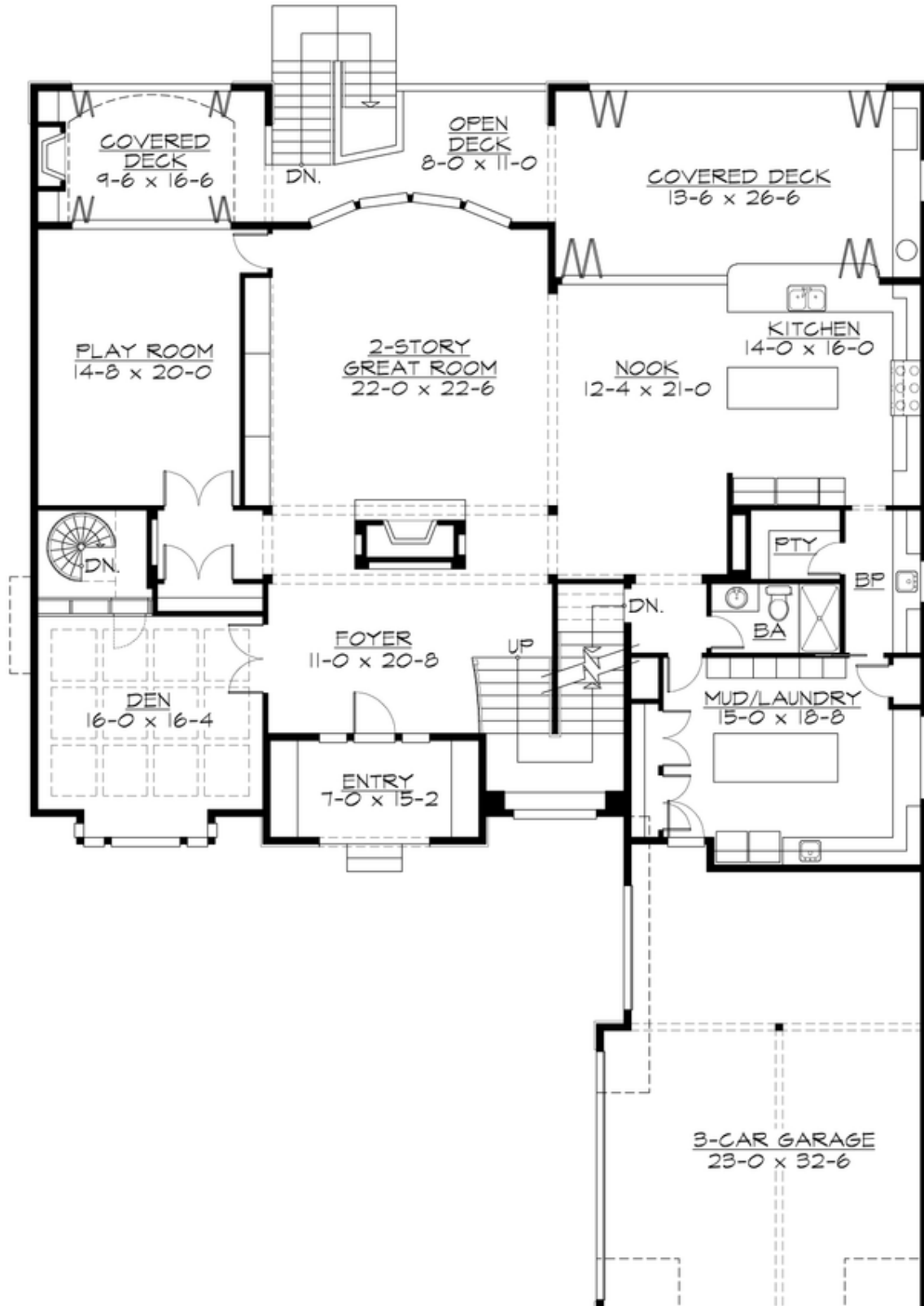
## SHOREHAVEN - PLAN M8190A3S-0PB

Total Area: 8190 sq. ft.  
Garage Area: 782 sq. ft.  
Garage Area: 782 sq. ft.  
Garage Size: 3  
Stories: 3  
Bedrooms: 5  
Full Baths: 6  
Half Baths: 1  
Width: 65'-0"  
Depth: 90'-0"  
Height: 28'-6"  
Foundation: Daylight Basement



## SHOREHAVEN - PLAN M8190A3S-0PB

### MAIN FLOOR





## SHOREHAVEN - PLAN M8190A3S-0PB

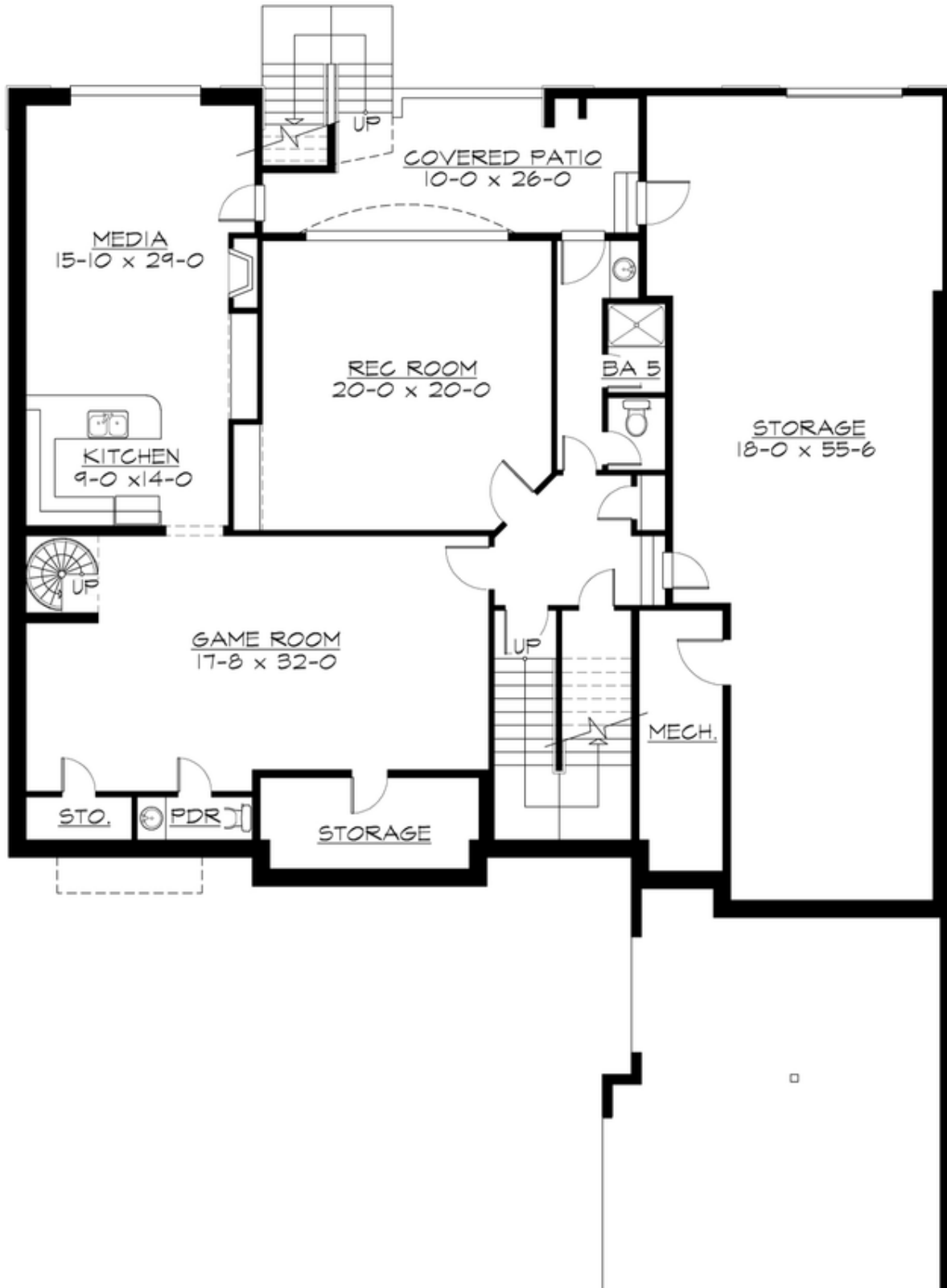
### UPPER FLOOR





## SHOREHAVEN - PLAN M8190A3S-0PB

### LOWER FLOOR





## SHOREHAVEN - PLAN M8190A3S-0PB

### PLAN DETAILS

#### Area Summary

Total Area:	8190 sq. ft.
Main Floor:	2722 sq. ft.
Upper Floor:	3146 sq. ft.
3rd Floor:	193 sq. ft.
Lower Floor:	2129 sq. ft.
Garage Floor:	782 sq. ft.

#### General Information

Stories:	3
Width:	65'-0"
Depth:	90'-0"
Height:	28'-6"

#### Architectural Style

Hampton  
Shingle  
Traditional

#### Number of Rooms

Bedrooms:	5
Full Baths:	6
Half Baths:	1

#### Garage

Garage Size:	3
Garage Door Location:	Side

#### Roof Pitches

Primary:	8:12
Secondary:	4:12

#### Wall Heights

Main:	10'-0"
Upper:	9'-0"
Lower:	10'-0"

#### Foundation Type

Daylight Basement

#### Roof Framing

Combination

#### Floor Load

Live (lbs):	40 PSF
Dead (lbs):	10 PSF

#### Roof Load

Live (lbs):	25 PSF
Dead (lbs):	15 PSF
Wind:	85 MPH

#### Design Features

- Bonus Space @ Main Floor, Upper Floor & Lower Floor
- Den/Office
- Front and Rear Porch
- Great Room
- Laundry Room @ Main Floor
- Luxury Plan
- Master Bedroom @ Upper Floor Rear
- View Lot - Rear