

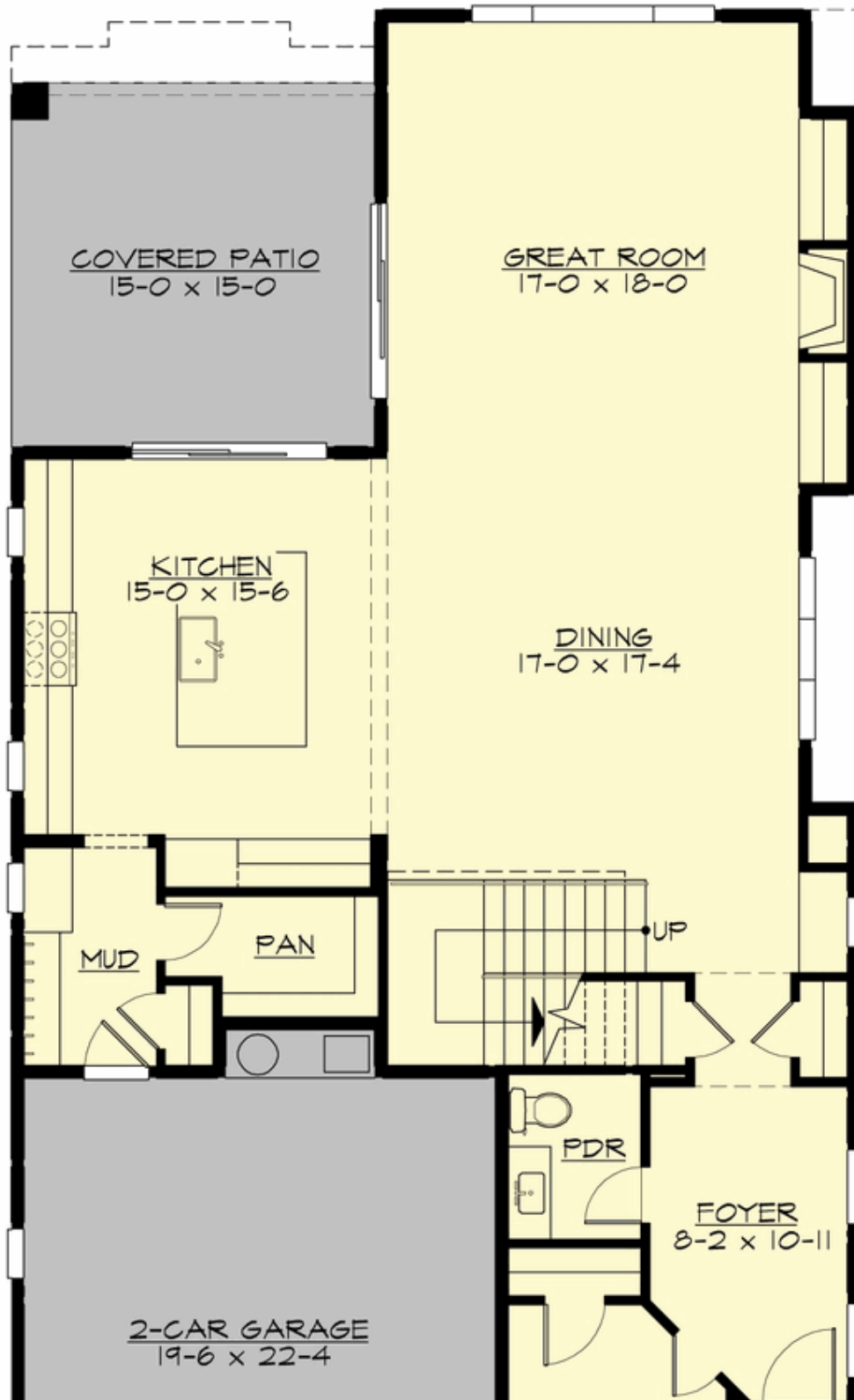
## DANA - PLAN M3639A2F-0R

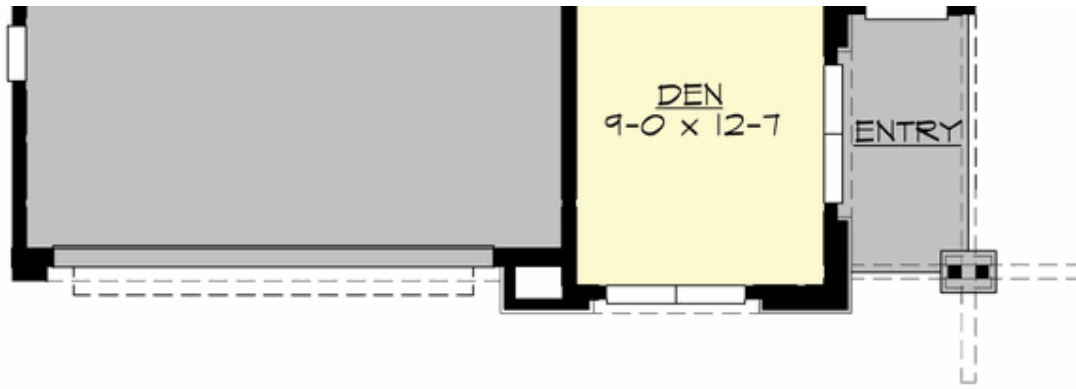
Total Area: 3641 sq. ft.  
Garage Area: 472 sq. ft.  
Garage Area: 472 sq. ft.  
Garage Size: 2  
Stories: 2  
Bedrooms: 4  
Full Baths: 3  
Half Baths: 1  
Width: 35'-0"  
Depth: 68'-6"  
Height: 23'-10"  
Foundation: Crawl Space



## DANA - PLAN M3639A2F-0R

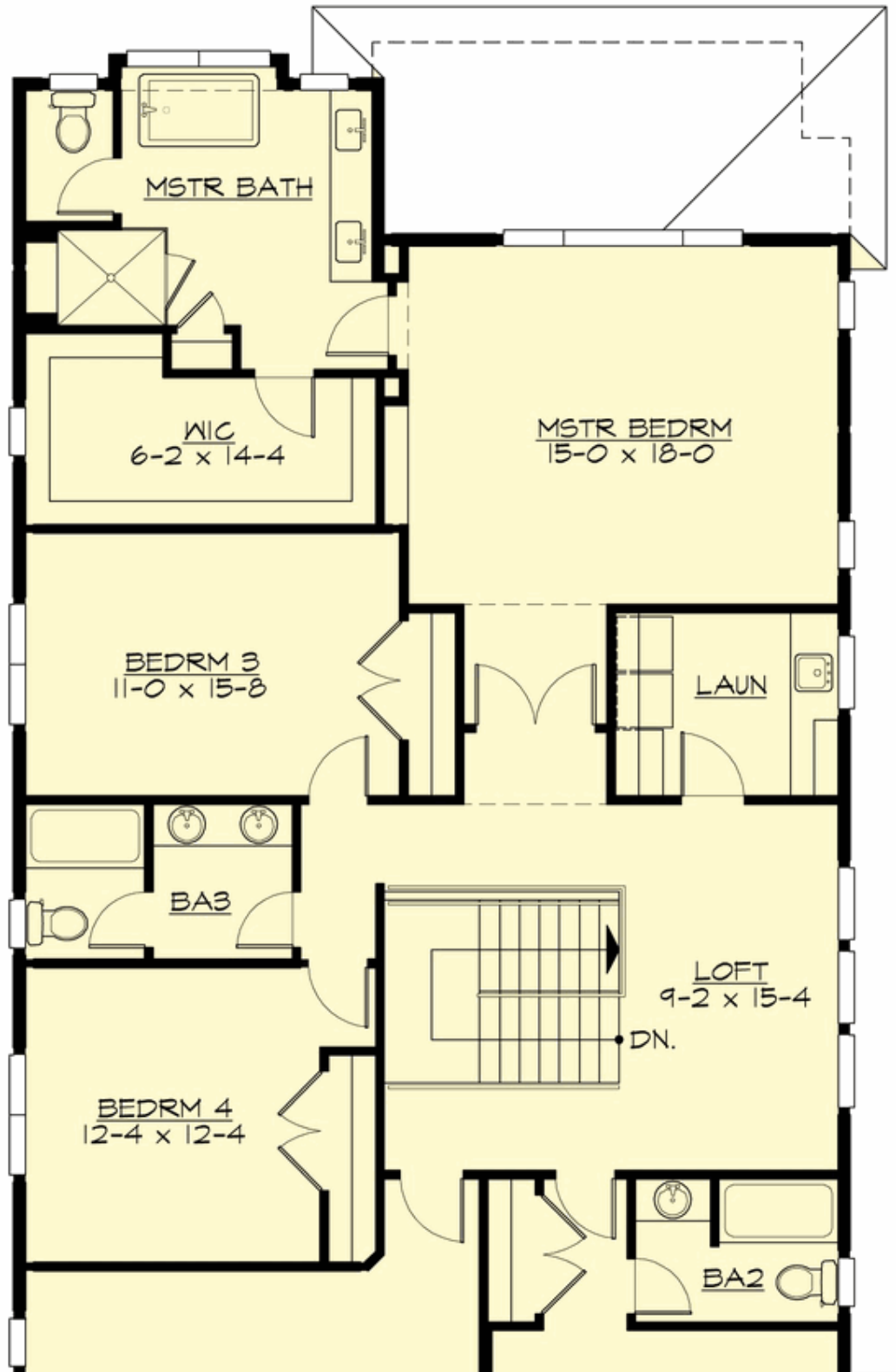
### MAIN FLOOR

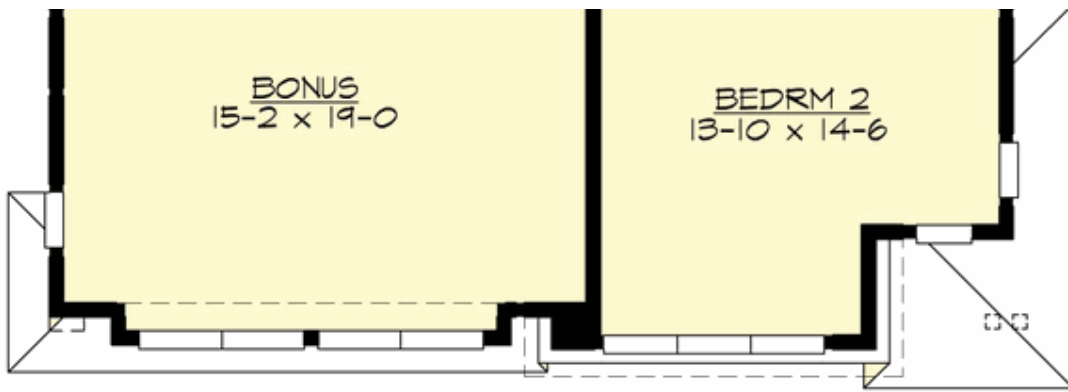




## DANA - PLAN M3639A2F-0R

### UPPER FLOOR





## DANA - PLAN M3639A2F-0R

### PLAN DETAILS

#### Area Summary

Total Area: 3641 sq. ft.  
Main Floor: 1534 sq. ft.  
Upper Floor: 2107 sq. ft.  
Garage Floor: 472 sq. ft.

#### General Information

Stories: 2  
Width: 35'-0"  
Depth: 68'-6"  
Height: 23'-10"

#### Architectural Style

Contemporary  
Modern  
Prairie

#### Number of Rooms

Bedrooms: 4  
Full Baths: 3  
Half Baths: 1

#### Garage

Garage Size: 2  
Garage Door Location: Front

#### Roof Pitches

Primary: 3:12

#### Wall Heights

Main: 9'-0"  
Upper: 9'-0"

#### Foundation Type

Crawl Space

#### Roof Framing

Trusses

#### Floor Load

Live (lbs): 40 PSF  
Dead (lbs): 10 PSF

#### Roof Load

Live (lbs): 25 PSF  
Dead (lbs): 15 PSF  
Wind: 85 MPH

#### Design Features

- Bonus Space @ Upper Floor
- Den/Office
- Front and Rear Porch
- Great Room
- Laundry Room @ Upper Floor
- Master Bedroom @ Upper Floor Rear
- Narrow Lot
- New Plan
- View Lot - Rear