

## SYNTHIA - PLAN M8955A4S-0DB

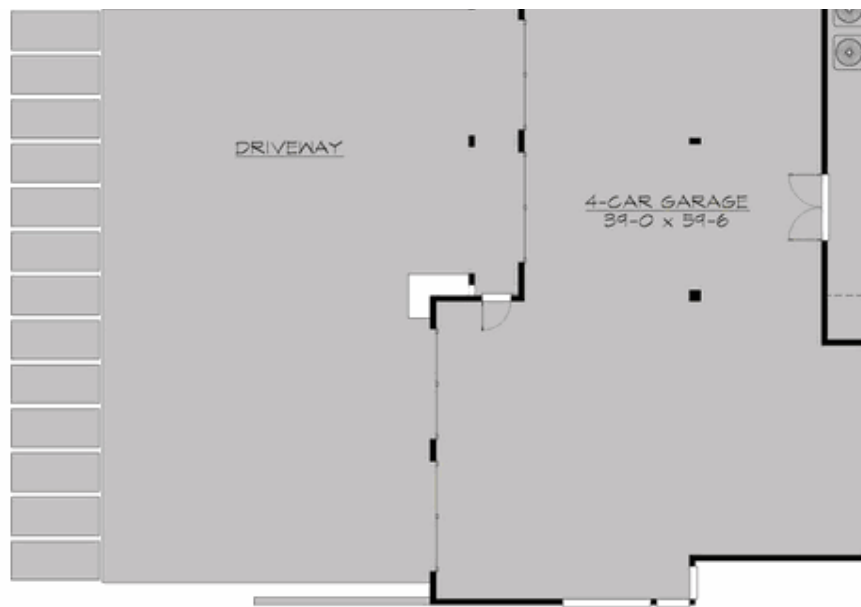
Total Area: 13535 sq. ft.  
Garage Area: 1936 sq. ft.  
Garage Area: 1936 sq. ft.  
Garage Size: 4  
Stories: 3  
Bedrooms: 7  
Full Baths: 7  
Half Baths: 4  
Width: 100'-0"  
Depth: 144'-0"  
Height: 32'-0"  
Foundation: Daylight Basement



## SYNTHIA - PLAN M8955A4S-0DB

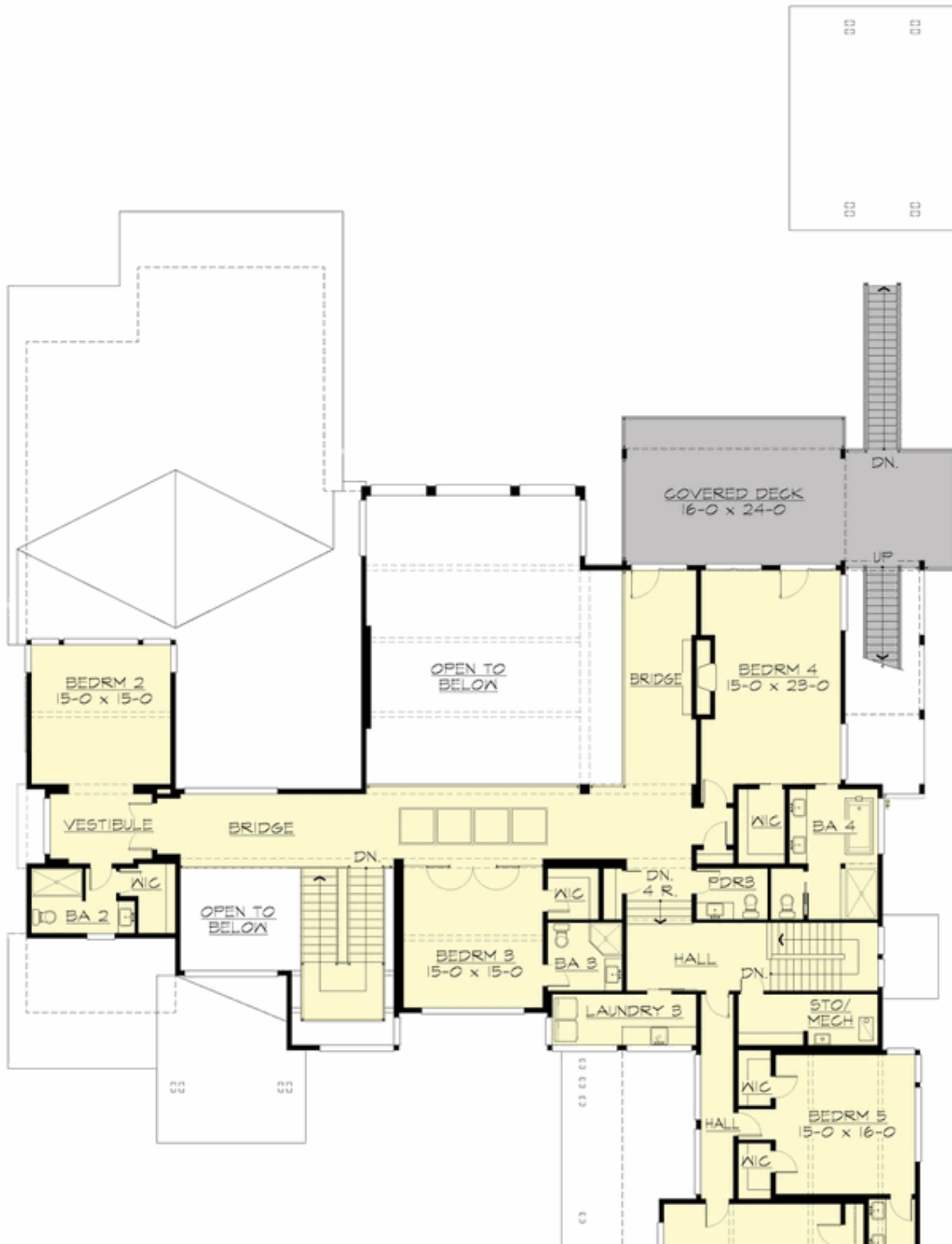
### MAIN FLOOR

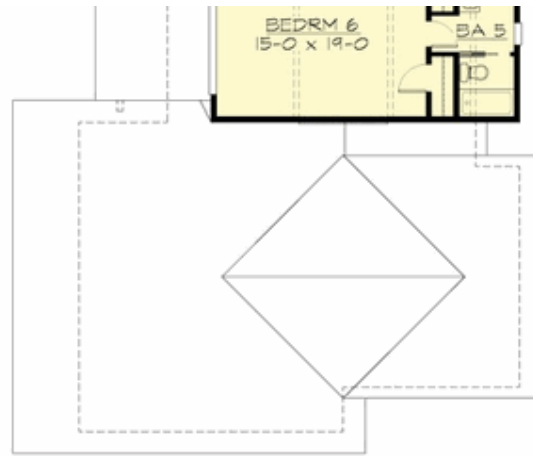




## SYNTHIA - PLAN M8955A4S-0DB

### UPPER FLOOR



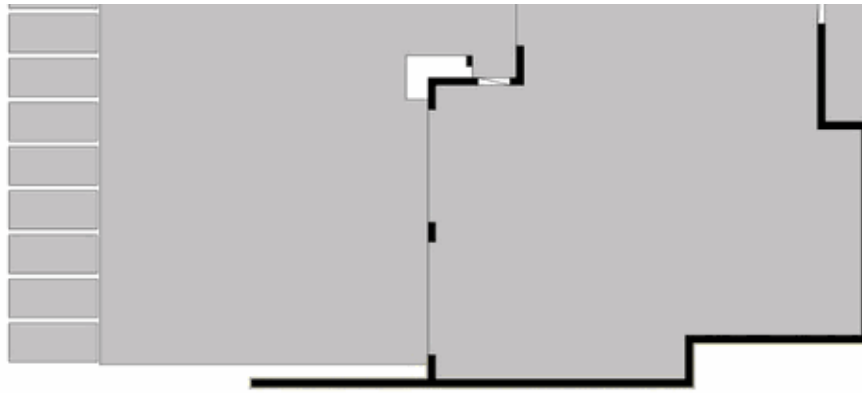


**SYNTHIA - PLAN M8955A4S-0DB**

## LOWER FLOOR

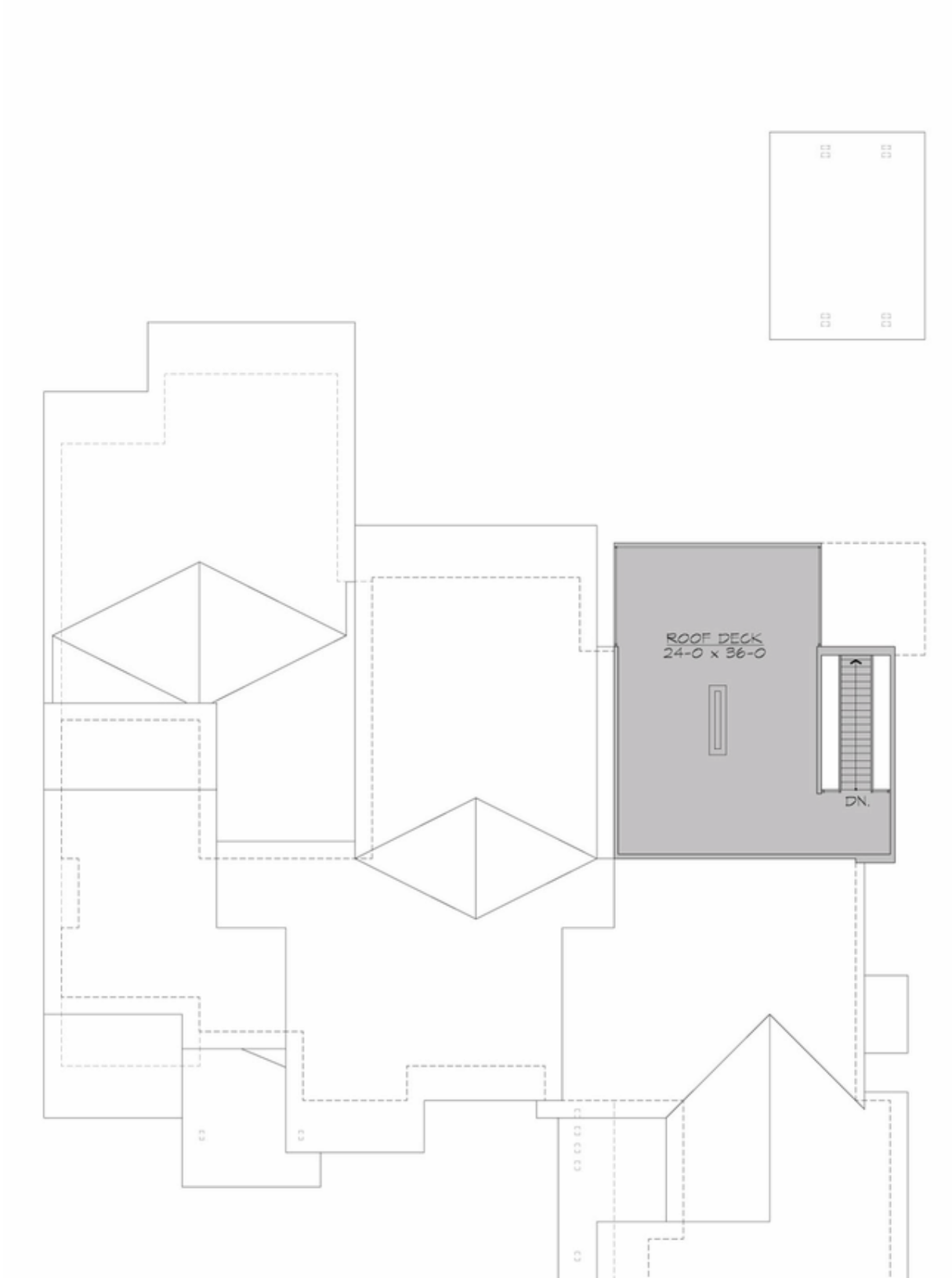


**COPYRIGHT NOTICE:** It is illegal to build this plan without a legally obtained set of prints. It is illegal to copy or redraw these plans. Violation of U.S. Copyright Laws are punishable with fines up to \$150,000.

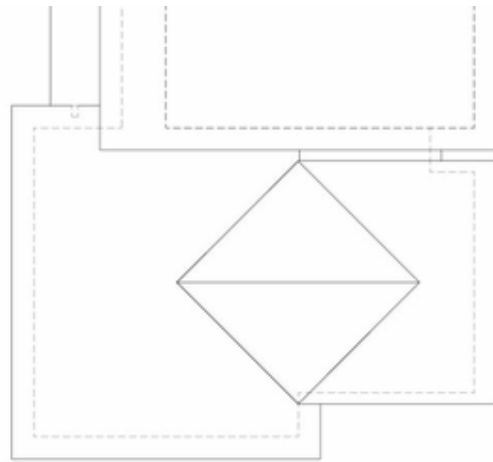


## SYNTHIA - PLAN M8955A4S-0DB

### THIRD FLOOR







## SYNTHIA - PLAN M8955A4S-0DB

### PLAN DETAILS

#### Area Summary

Total Area:	13535 sq. ft.
Main Floor:	5670 sq. ft.
Upper Floor:	3285 sq. ft.
Lower Floor:	4580 sq. ft.
Garage Floor:	1936 sq. ft.

#### General Information

Stories:	3
Width:	100'-0"
Depth:	144'-0"
Height:	32'-0"

#### Architectural Style

Contemporary  
Modern  
Northwest

#### Number of Rooms

Bedrooms:	7
Full Baths:	7
Half Baths:	4

#### Garage

Garage Size:	4
Garage Door Location:	Side

#### Roof Pitches

Primary:	2:12
----------	------

#### Wall Heights

Main:	12'-0"
Upper:	10'-0"
Lower:	10'-0"

#### Foundation Type

Daylight Basement

#### Roof Framing

Trusses

#### Floor Load

Live (lbs):	40 PSF
Dead (lbs):	10 PSF

#### Roof Load

Live (lbs):	25 PSF
Dead (lbs):	15 PSF
Wind:	85 MPH

#### Design Features

- Den/Office
- Great Room
- Laundry Room @ Main & Upper Floor
- Luxury Plan
- Master Bedroom @ Main Floor Rear
- New Plan
- Rear Porch
- View Lot - Rear