

## PALLADIAN COURT - PLAN R4195A3F-0

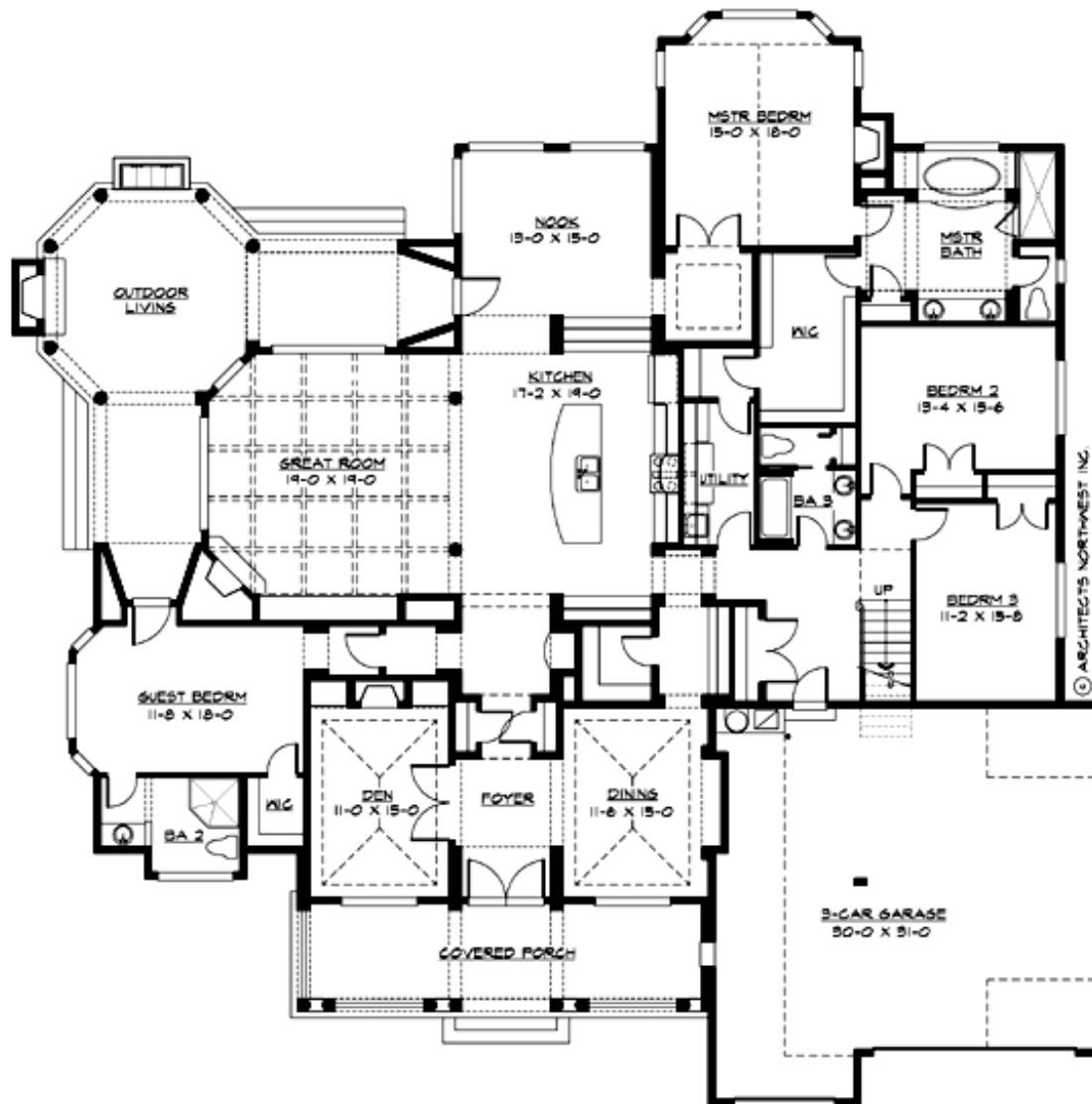
Total Area: 4195 sq. ft.  
Garage Area: 915 sq. ft.  
Garage Area: 915 sq. ft.  
Garage Size: 3  
Stories: 2  
Bedrooms: 4  
Full Baths: 3  
Width: 86'-0"  
Depth: 87'-0"  
Height: 28'-0"  
Foundation: Crawl Space



***Elegant Arches Embellish Dignified Design,***<sup>the</sup> Palladian Court is designed with privacy and flexibility in mind for a multi-generational family. The facade features traditional columns and arches, softened by Shingle-style details. The grand front porch opens to a centered foyer, with a den and formal dining room opposite, plus butlery and walk-in pantry. The beamed great room with built-in fireplace and entertainment center, gourmet kitchen with its huge island, and multi-windowed eating nook create a spacious family area, all opening onto the large, wraparound outdoor living porch. A vestibule off the nook leads to the grand vaulted master suite with reading bay, fireplace, five-fixture master bath, and a huge walk-in closet with convenient laundry room access. Two secondary bedrooms, a bath, laundry, and the stair to a large upstairs bonus room are located on the garage side, with a deluxe guest suite secluded on the other side of the home

# PALLADIAN COURT - PLAN R4195A3F-0

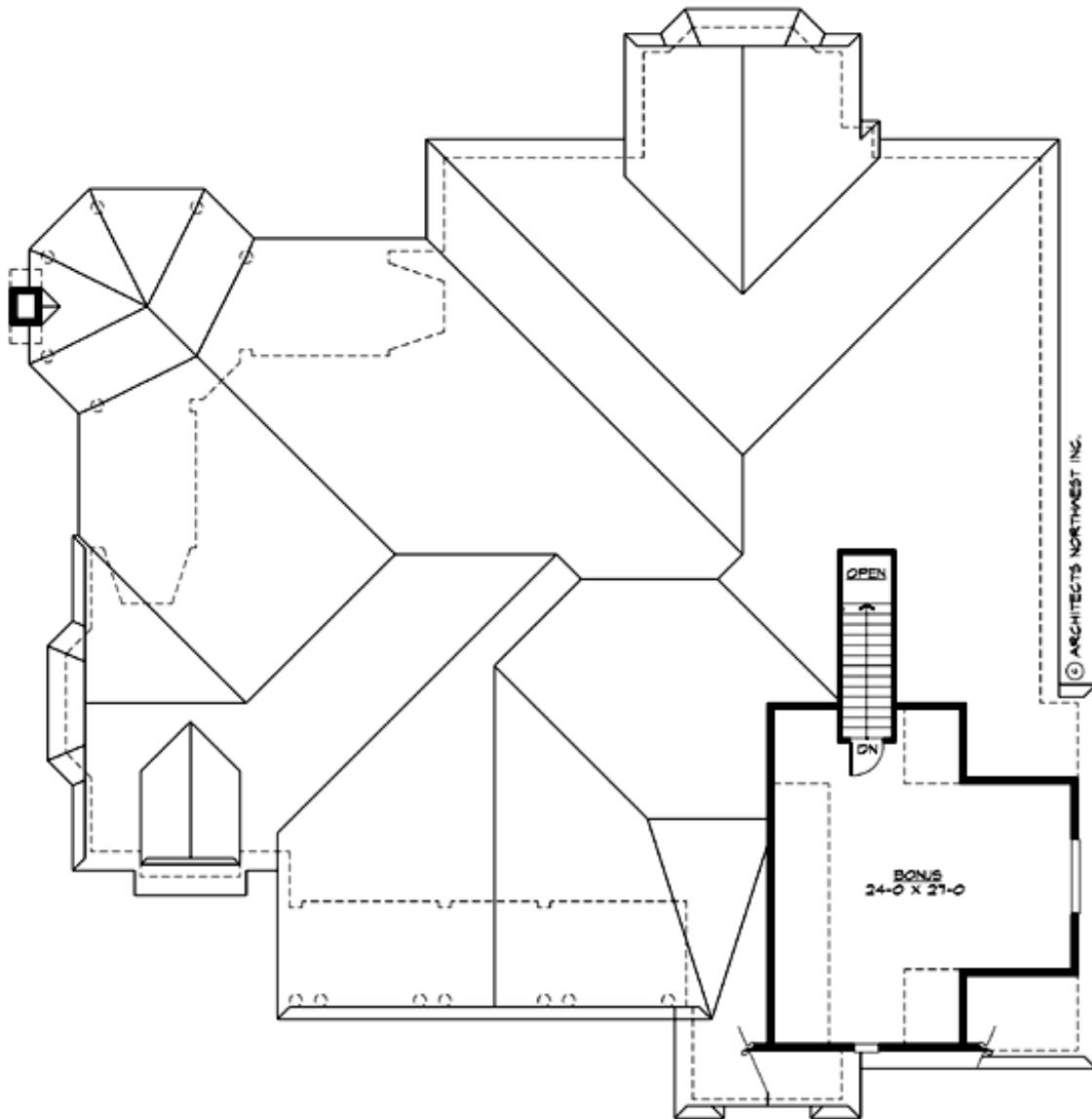
## MAIN FLOOR



**COPYRIGHT NOTICE:** It is illegal to build this plan without a legally obtained set of prints. It is illegal to copy or redraw these plans. Violation of U.S. Copyright Laws are punishable with fines up to \$150,000.

**PALLADIAN COURT - PLAN R4195A3F-0**

**UPPER FLOOR**



## PALLADIAN COURT - PLAN R4195A3F-0

### PLAN DETAILS

#### Area Summary

Total Area: 4195 sq. ft.  
Main Floor: 3603 sq. ft.  
Upper Floor: 592 sq. ft.  
Garage Floor: 915 sq. ft.

#### General Information

Stories: 2  
Width: 86'-0"  
Depth: 87'-0"  
Height: 28'-0"

#### Architectural Style

Farmhouse  
Hampton  
Shingle

#### Number of Rooms

Bedrooms: 4  
Full Baths: 3

#### Garage

Garage Size: 3  
Garage Door Location: Front

#### Roof Pitches

Primary: 8:12

#### Wall Heights

Main: 10'-0"  
Upper: 8'-0"  
3rd Floor: 0'-0"  
Lower: 0'-0"

#### Foundation Type

Crawl Space

#### Roof Framing

Combination

#### Floor Load

Live (lbs): 40 PSF  
Dead (lbs): 10 PSF

#### Roof Load

Live (lbs): 25 PSF  
Dead (lbs): 15 PSF  
Wind: 85 MPH

#### Design Features

- Bonus Space @ Upper Floor
- Den/Office
- Great Room
- Laundry Room @ Main Floor
- Master Bedroom @ Main Floor Rear
- View Lot - Rear
- Wide Lot
- Wrap-Around Porch