

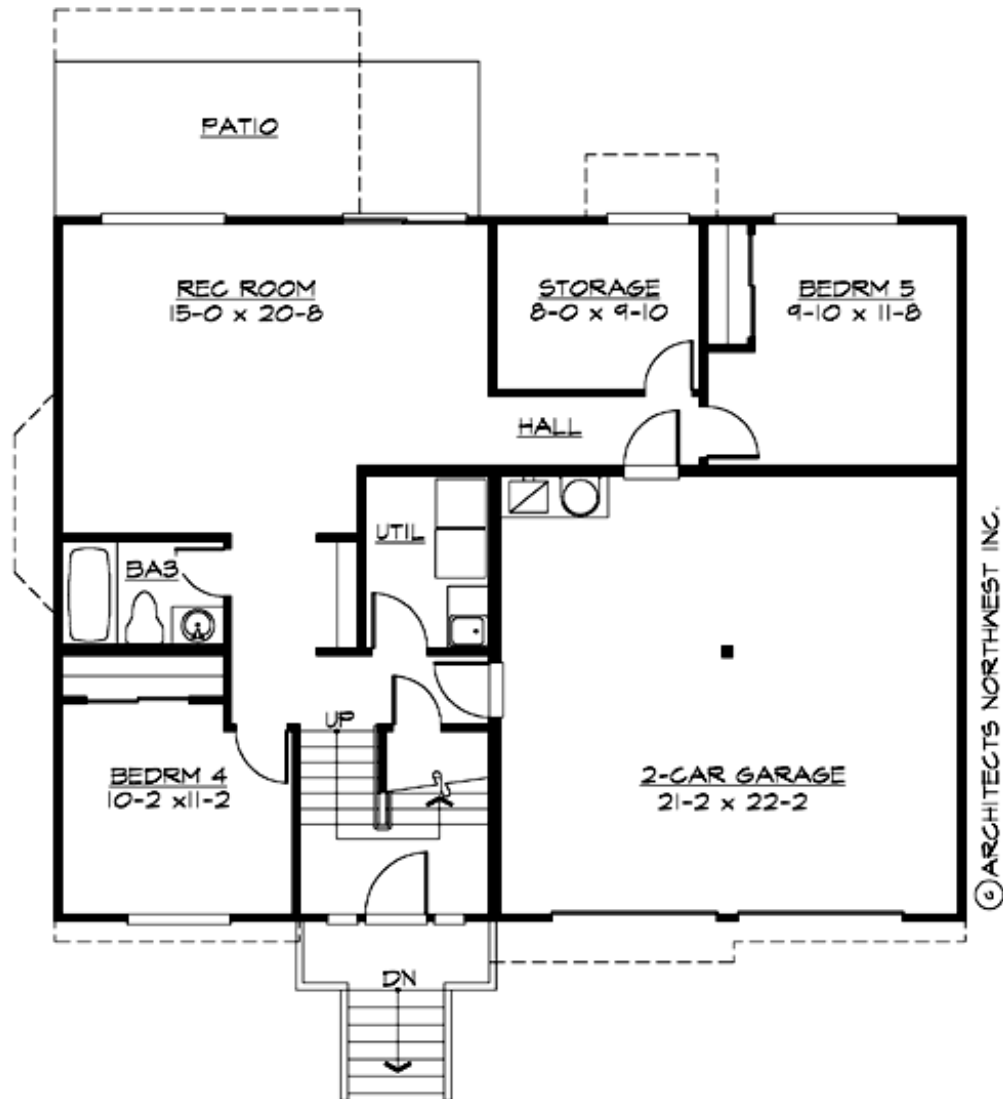
## ROCKWELL - PLAN S2195A2F-0

Total Area: 2544 sq. ft.  
Garage Area: 484 sq. ft.  
Garage Area: 484 sq. ft.  
Garage Size: 2  
Stories: 2  
Bedrooms: 5  
Full Baths: 3  
Width: 46'-0"  
Depth: 39'-0"  
Height: 26'-0"  
Foundation: Slab On Grade



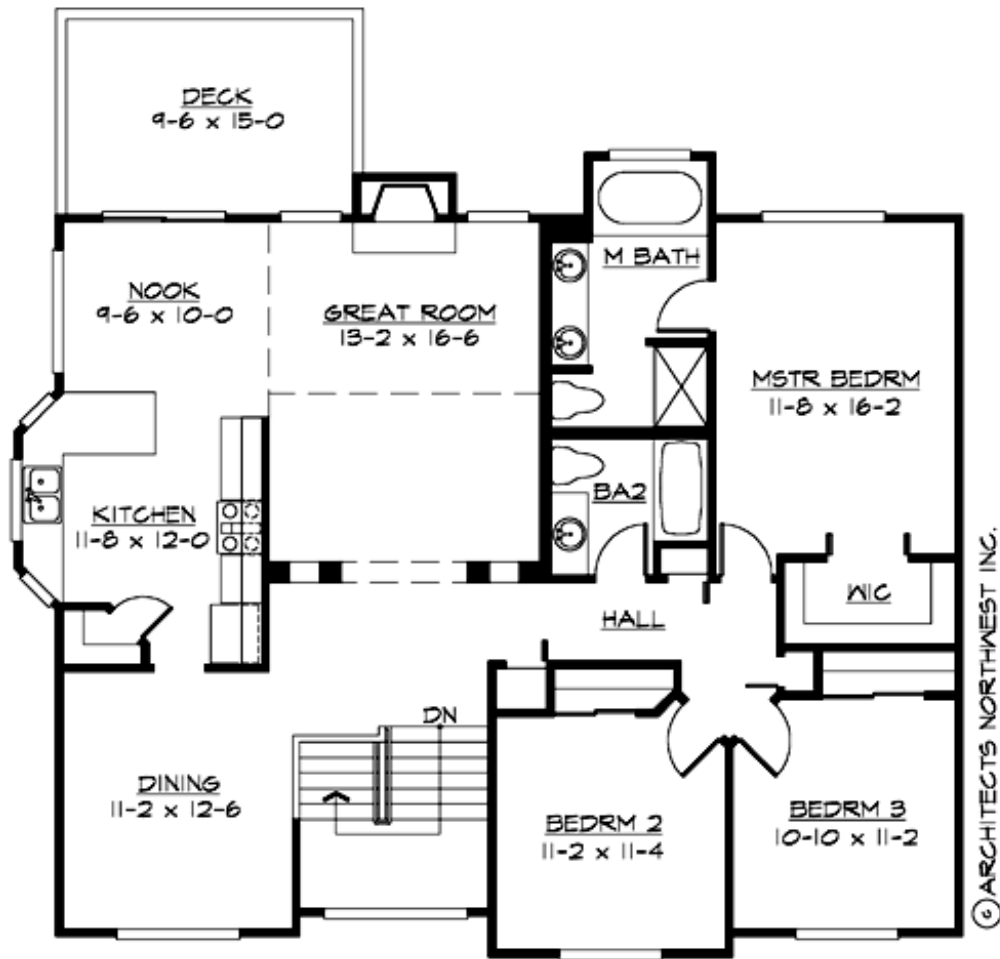
## ROCKWELL - PLAN S2195A2F-0

### MAIN FLOOR



## ROCKWELL - PLAN S2195A2F-0

### UPPER FLOOR





## ROCKWELL - PLAN S2195A2F-0

### PLAN DETAILS

#### Area Summary

Total Area: 2544 sq. ft.  
Main Floor: 1532 sq. ft.  
Lower Floor: 1012 sq. ft.  
Garage Floor: 484 sq. ft.

#### General Information

Stories: 2  
Width: 46'-0"  
Depth: 39'-0"  
Height: 26'-0"

#### Architectural Style

Contemporary  
Northwest  
Ranch

#### Number of Rooms

Bedrooms: 5  
Full Baths: 3

#### Garage

Garage Size: 2  
Garage Door Location: Front

#### Roof Pitches

Primary: 6:12  
Secondary: 8:12

#### Wall Heights

Main: 8'-0"  
Upper: 0'-0"  
3rd Floor: 0'-0"  
Lower: 8'-0"

#### Foundation Type

Slab On Grade

#### Roof Framing

Trusses

#### Floor Load

Live (lbs): 40 PSF  
Dead (lbs): 10 PSF

#### Roof Load

Live (lbs): 25 PSF  
Dead (lbs): 15 PSF  
Wind: 85 MPH

#### Design Features

- Affordable Plan
- Bonus Space @ Lower Floor
- Laundry Room @ Lower Floor
- Master Bedroom @ Main Floor Rear
- Narrow Lot