

## COTTAGE GROVE COMPANION - PLAN A755A3F-0

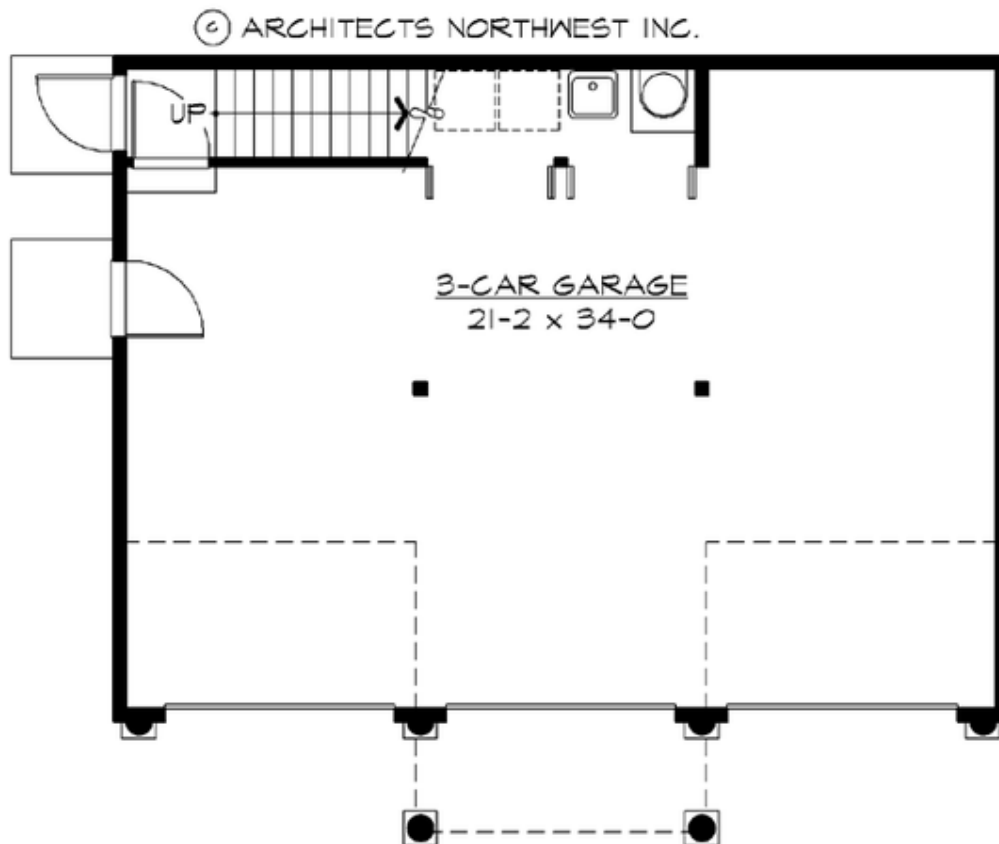
Total Area: 755 sq. ft.  
Garage Area: 900 sq. ft.  
Garage Area: 900 sq. ft.  
Garage Size: 3  
Stories: 2  
Bedrooms: 1  
Full Baths: 1  
Width: 35'-0"  
Depth: 30'-0"  
Height: 27'-6"  
Foundation: Slab On Grade



***An Ideal Mother-In-Law With 3-Car Garage.*** Designed for extended-family flexibility, the Cottage Grove Companion offers a large 3-car garage, topped by a delightful guest house plan featuring a private entry with a spacious one-bedroom apartment. Traditional roof forms and classic detailing make this plan an attractive fit in any neighborhood.

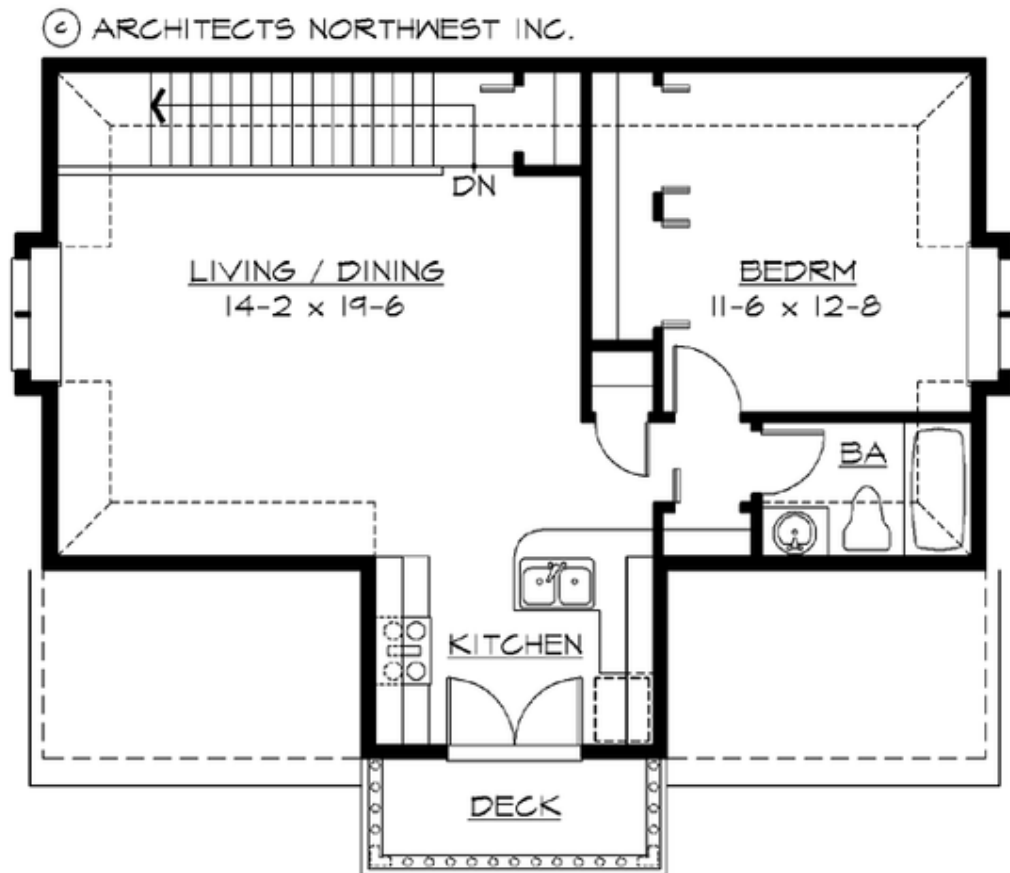
**COTTAGE GROVE COMPANION - PLAN A755A3F-0**

**MAIN FLOOR**



## COTTAGE GROVE COMPANION - PLAN A755A3F-0

### UPPER FLOOR





## COTTAGE GROVE COMPANION - PLAN A755A3F-0

### PLAN DETAILS

#### Area Summary

Total Area: 755 sq. ft.  
Upper Floor: 755 sq. ft.  
Garage Floor: 900 sq. ft.

#### General Information

Stories: 2  
Width: 35'-0"  
Depth: 30'-0"  
Height: 27'-6"

#### Architectural Style

Carriage  
Hampton  
Shingle

#### Number of Rooms

Bedrooms: 1  
Full Baths: 1

#### Garage

Garage Size: 3  
Garage Door Location: Front

#### Roof Pitches

Primary: 12:12

#### Wall Heights

Main: 9'-0"  
Upper: 9'-0"  
3rd Floor: 0'-0"  
Lower: 0'-0"

#### Foundation Type

Slab On Grade

#### Roof Framing

Stick

#### Floor Load

Live (lbs): 40 PSF  
Dead (lbs): 10 PSF

#### Roof Load

Live (lbs): 25 PSF  
Dead (lbs): 15 PSF  
Wind: 85 MPH

#### Design Features

- Affordable Plan
- Best Selling Plan
- Laundry Room @ Main Floor
- Living & Family Room
- Narrow Lot