

## WINDERMERE - PLAN M6300A2S2FD-0

Total Area: 6300 sq. ft.  
 Garage Area: 1336 sq. ft.  
 Garage Area: 1336 sq. ft.  
 Garage Size: 4  
 Stories: 2  
 Bedrooms: 5  
 Full Baths: 5  
 Half Baths: 1  
 Width: 125'-0"  
 Depth: 71'-0"  
 Height: 36'-0"  
 Foundation: Crawl Space

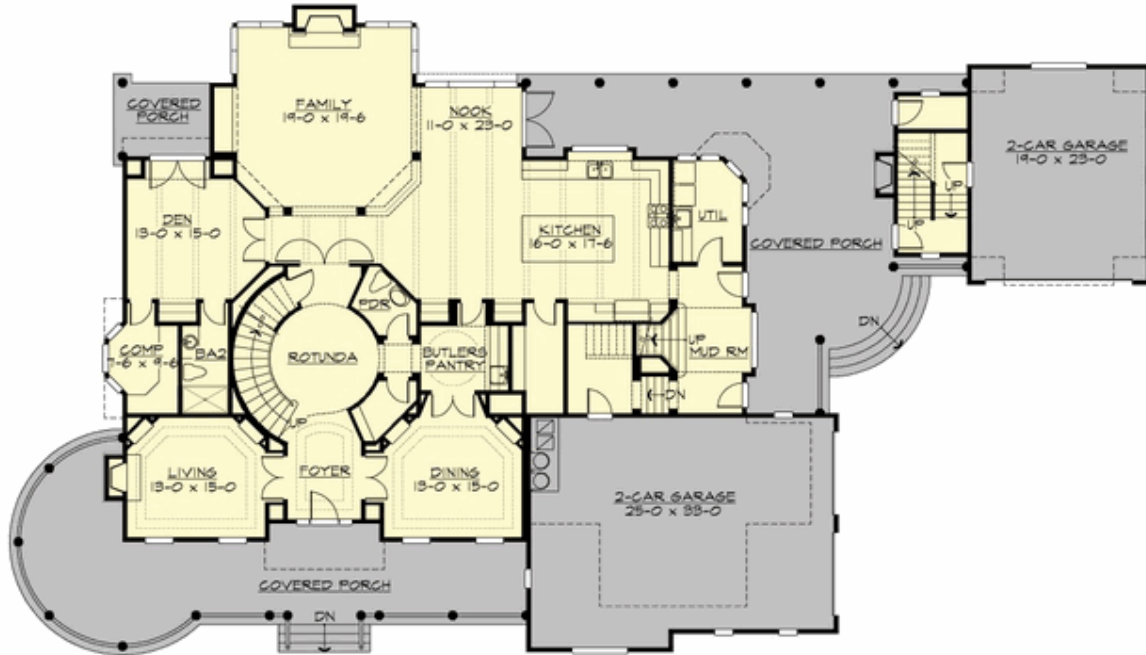


### ***The Ultimate Farmhouse Showcases Drama and Luxury.***

A complimentary pair of structures linked by expansive porches, the Windermere offers a grand estate lifestyle with the flexibility to accommodate large or multigenerational families in luxurious surroundings. The gracefully rounded front porch welcomes visitors into the formal foyer, with living and dining rooms on each side. A powerful axis leads through the dramatic central stair rotunda into the double-height family room. A gigantic gourmet island kitchen and nook complete the large informal living space, along with generous service spaces including a powder room, walk-in coat closet, butlery, walk-in pantry, laundry, and mud room leading to the enormous covered BBQ porch with fireplace. A large den with computer nook, private deck and bathroom doubles as a main floor bedroom suite. Upstairs, the foursquare layout includes a huge vaulted master suite with his-and-hers walk-in closets and a decadent master bath with platform soaking tub, three large secondary bedrooms sharing two large baths and a play loft, a laundry room, an enormous bonus room, and a back stair to the mud room area. An oversize 2-car garage with extra storage depth is attached to the main residence, while the semi-detached 2-car garage includes a second-story studio with bath that works as a home business office, mother-in-law apartment, guest suite, caregiver suite or rental.

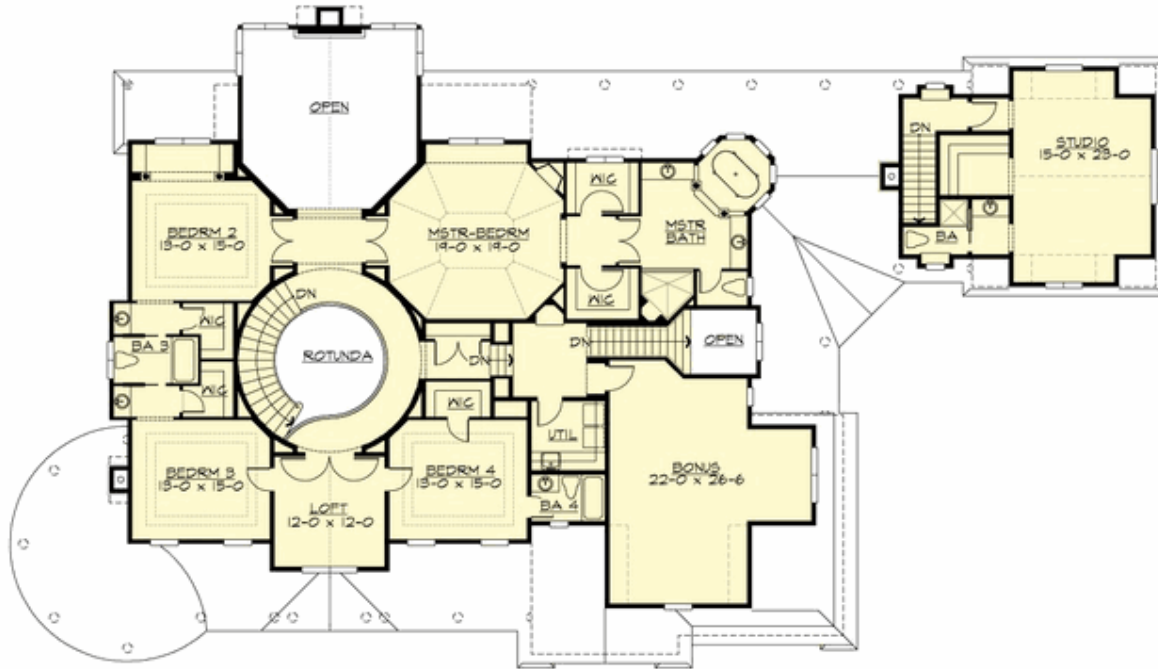
## WINDERMERE - PLAN M6300A2S2FD-0

### MAIN FLOOR



## WINDERMERE - PLAN M6300A2S2FD-0

### UPPER FLOOR





## WINDERMERE - PLAN M6300A2S2FD-0

### PLAN DETAILS

#### Area Summary

Total Area: 6300 sq. ft.  
Main Floor: 2894 sq. ft.  
Upper Floor: 3406 sq. ft.  
Garage Floor: 1336 sq. ft.

#### General Information

Stories: 2  
Width: 125'-0"  
Depth: 71'-0"  
Height: 36'-0"

#### Architectural Style

Country  
Farmhouse  
Traditional

#### Number of Rooms

Bedrooms: 5  
Full Baths: 5  
Half Baths: 1

#### Garage

Garage Size: 4  
Garage Door Location: Side  
Garage Type: Detached

#### Roof Pitches

Primary: 8:12  
Secondary: 12:12

#### Wall Heights

Main: 0'-0"  
Upper: 0'-0"  
3rd Floor: 0'-0"  
Lower: 0'-0"

#### Foundation Type

Crawl Space

#### Roof Framing

Combination

#### Floor Load

Live (lbs): 40 PSF  
Dead (lbs): 10 PSF

#### Roof Load

Live (lbs): 25 PSF  
Dead (lbs): 15 PSF  
Wind: 85 MPH

#### Design Features

- Best Selling Plan
- Bonus Space @ Upper Floor
- Den/Office
- Front Porch
- Laundry Room @ Main & Upper Floor
- Living & Family Room
- Master Bedroom @ Upper Floor Rear
- View Lot - Rear