

## CAREYMERE - PLAN R3020A2F-0

Total Area: 3020 sq. ft.  
Garage Area: 520 sq. ft.  
Garage Area: 520 sq. ft.  
Garage Size: 2  
Stories: 2  
Bedrooms: 3  
Full Baths: 3  
Half Baths: 1  
Width: 62'-0"  
Depth: 68'-0"  
Height: 27'-0"  
Foundation: Crawl Space

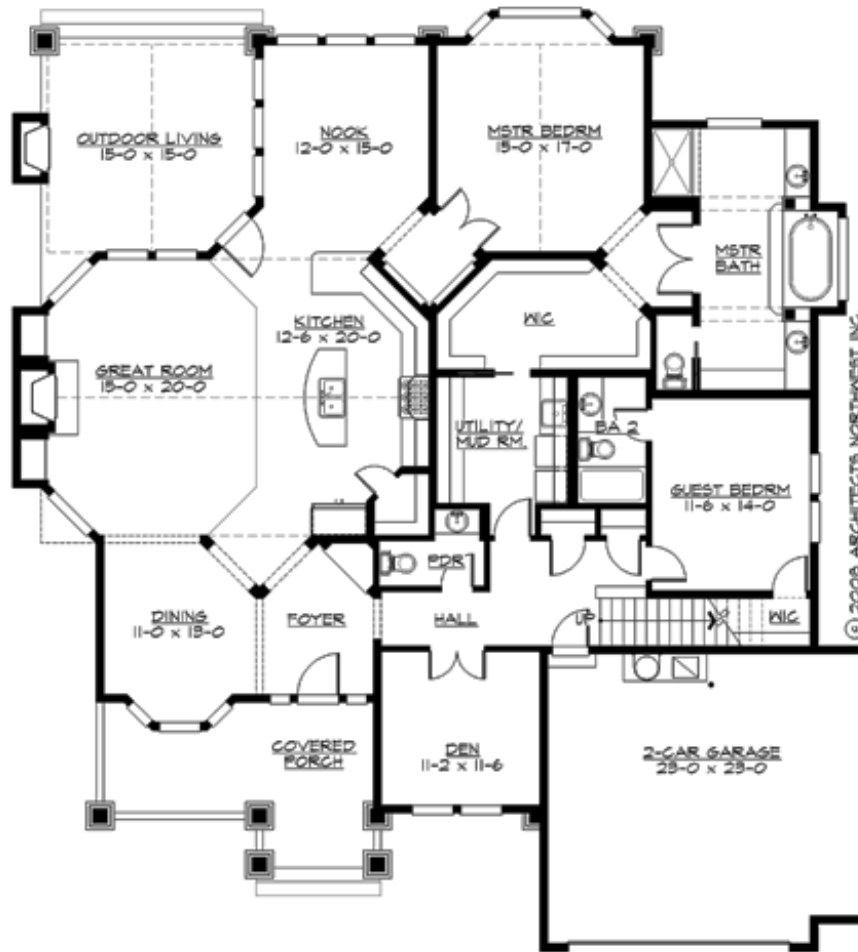


### ***Popular Plan Packed with County Craftsman Charm.***

Timber-frame accents highlight the winsome façade of this popular design; accentuated by its lively gabled roofs cape, rugged stone wainscots, shingle siding and cozy shutters. The Careymer's broad front porch and large, vaulted rear BBQ porch encourage outdoor living and entertaining. From the foyer, visitors can take in the full expanse of the dramatic, well-lit interior, from the formal dining area in front, to the enormous vaulted great room and gourmet island kitchen, to the window-lined breakfast nook at the rear, which together create a dynamic, open family living space. Accessed through a private vestibule off the nook is the deluxe master suite, which features a bright bay window, a luxurious five-fixture bath, and a huge walk-in closet with direct laundry access. A work-at-home den, powder room, laundry room and a bedroom with en suite bath, garage and stair access are located at the front of the home. Upstairs, a large bonus room and third bedroom with full bath round out this fetching, flexible family floor plan.

**CAREYMERE - PLAN R3020A2F-0**

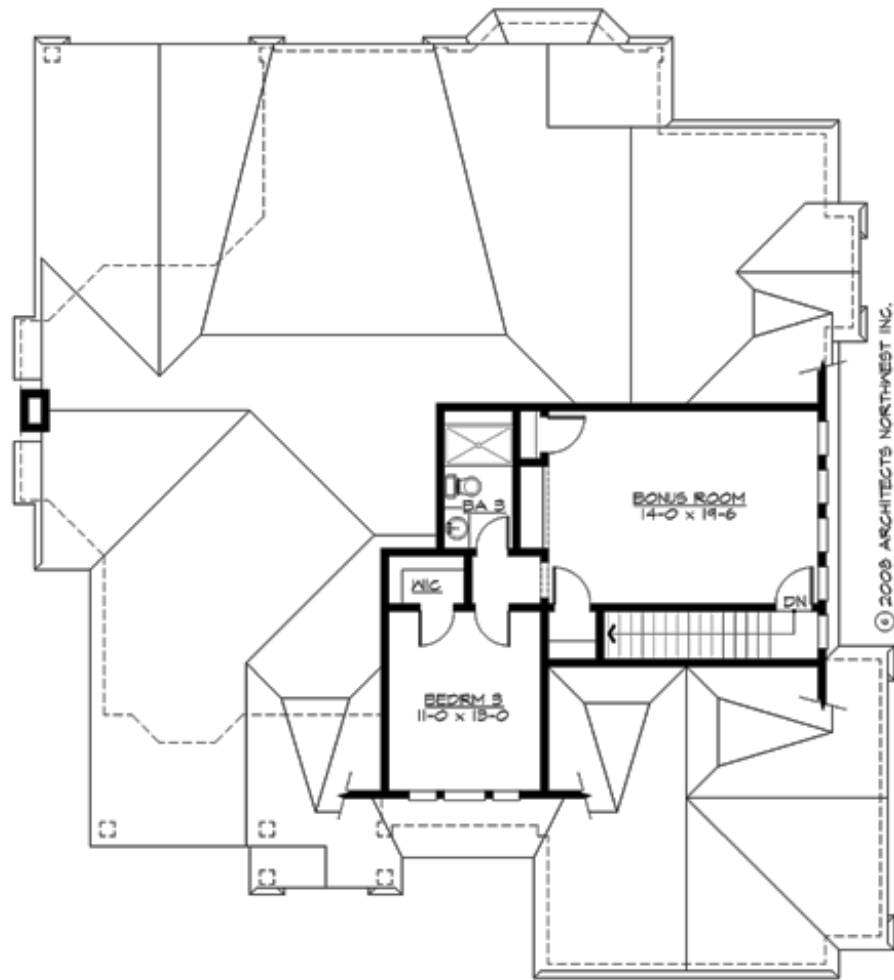
## MAIN FLOOR



**COPYRIGHT NOTICE:** It is illegal to build this plan without a legally obtained set of prints. It is illegal to copy or redraw these plans. Violation of U.S. Copyright Laws are punishable with fines up to \$150,000.

## CAREYMER - PLAN R3020A2F-0

### UPPER FLOOR





## CAREYMER - PLAN R3020A2F-0

### PLAN DETAILS

#### Area Summary

Total Area: 3020 sq. ft.  
Main Floor: 2400 sq. ft.  
Upper Floor: 620 sq. ft.  
Garage Floor: 520 sq. ft.

#### General Information

Stories: 2  
Width: 62'-0"  
Depth: 68'-0"  
Height: 27'-0"

#### Architectural Style

Cottage  
Lodge  
Traditional

#### Number of Rooms

Bedrooms: 3  
Full Baths: 3  
Half Baths: 1

#### Garage

Garage Size: 2  
Garage Door Location: Front

#### Roof Pitches

Primary: 10:12  
Secondary: 3:12

#### Wall Heights

Main: 10'-0"  
Upper: 8'-0"  
3rd Floor: 0'-0"  
Lower: 0'-0"

#### Foundation Type

Crawl Space

#### Roof Framing

Trusses

#### Floor Load

Live (lbs): 40 PSF  
Dead (lbs): 10 PSF

#### Roof Load

Live (lbs): 25 PSF  
Dead (lbs): 15 PSF  
Wind: 85 MPH

#### Design Features

- Best Selling Plan
- Bonus Space @ Upper Floor
- Den/Office
- Front and Rear Porch
- Great Room
- Laundry Room @ Main Floor
- Master Bedroom @ Main Floor Rear
- View Lot - Rear
- Wide Lot